



[ Engage. Enrich. Empower. ]



# INTERNATIONAL PROGRAMS EBROCHURE





# LOCATION

Methodist University's has the ideal support environment for student learning. It's located in Fayetteville, North Carolina. You will not be bored in this town!

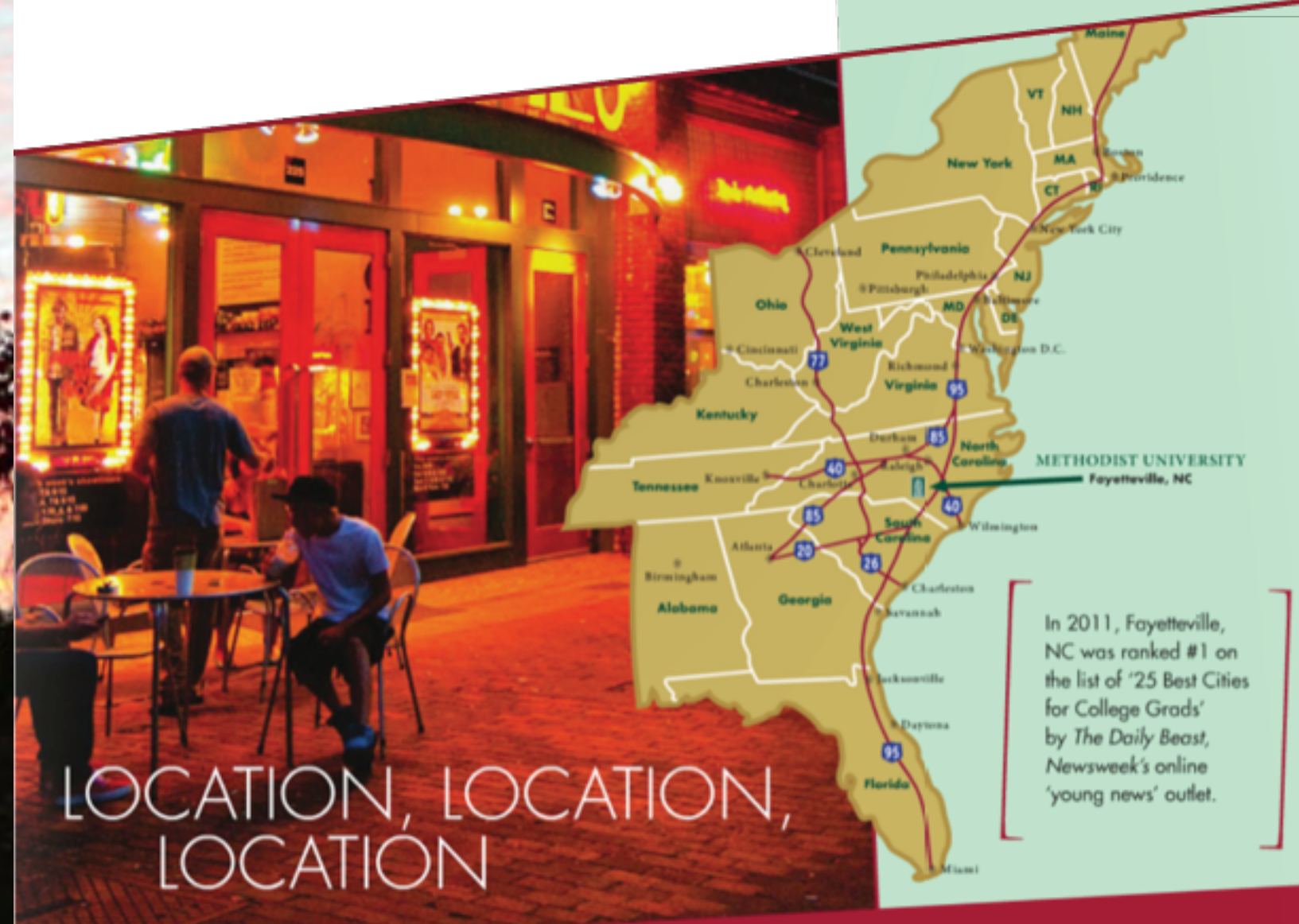
North Carolina is blessed with many exciting outdoor opportunities, such as rock climbing and wind surfing. In addition to everything on campus, staff are provided to help you find activities that are right for you!

## FAYETTEVILLE AREA OFFERS:

- Airborne & Special Operations
- Museum
- Cape Fear Botanical Garden
- Cape Fear Theater
- Cape Fear River Trail
- Concert in the Park
- Dogwood Festival
- Fourth Friday Events
- International Folk Festival
- Raven Rock State Park

## TABLE OF CONTENTS

1. Location
2. About Methodist University
3. Undergraduate / Graduate programs
4. Housing / Student life
5. Student testimonials
6. How to apply
7. Inquiry form
8. Contacts / Back cover



In 2011, Fayetteville, NC was ranked #1 on the list of '25 Best Cities for College Grads' by *The Daily Beast*, Newsweek's online 'young news' outlet.

# LOCATION, LOCATION, LOCATION



## METHODIST UNIVERSITY

Methodist University is a private four-year liberal arts university committed to respect for diversity and recognition of the dignity and worth of all human beings. The university is historically related to the United Methodist Church, but welcomes students from all religious backgrounds. Methodist University was first chartered by the state of North Carolina on November 1, 1956, as a senior, coeducational, residential college of liberal arts and sciences. It is accredited by the Commission on Colleges of the Southern Association of Colleges and Schools to award masters, baccalaureate, and associate degrees. The university is made up of The School of Arts and Humanities, The Reeves School of Business and Economics and The School of Graduate Studies.

## MU AT A GLANCE

Fayetteville, North Carolina is a city rich in military tradition and cultural diversity. The university is situated in the heart of America's golf country, a short drive from the coast or the mountains.

- Founded 1956
- Located within 6 miles of a regional airport
- Third-largest metropolitan area in North Carolina
- Approximately 2,359 students from more than 41 states & 69 countries
- 188 international students
- Average class size: 20
- Student to Faculty Ratio: 20:1

## WHY CHOOSE MU

- Has high quality education in a caring environment
- Opportunities for travel and study abroad are offered each academic year
- Top Tier ranking in US News and World Report

## INTERNATIONAL PROGRAMS OFFICE (IPO)

The International Programs Office provides services and guidance to all international students. New international students are required to attend orientation which takes place at the beginning of each semester. The students will meet with international student advisors who will address questions concerning academics, university life, employment, housing, health care, immigration, scholarships, taxes, travel, and other matters. The advisors also provide updates for international students on upcoming events, and changes in immigration regulations and visa issues.

## STUDENT VISAS

An F-1 Visa is a non-immigrant visa issued by a United States Consulate to a non-citizen who is coming to pursue a "full course study" within a U.S. academic institution and is expected to return to his/her home country upon degree completion. Upon acceptance, IPO will provide immigration documentation (I-20) in order for you to obtain your student F-1 Visa. International students (non-immigrants) entering the United States must enter on an F-1 Visa. It is imperative that you present a valid I-20 to the nearest U.S. Consulate in order to apply for an F-1 Visa.

Students may be required to present the following documents:

- Current, valid passport
- Acceptance letter from Methodist University
- Proof of SEVIS fee payment SEVIS form I-901 (Visit [fmjfee.com](http://fmjfee.com) for more information)
- Passport photograph
- Current financial statement
- Proof of permanent address in home country and plans to return to home country



# SCHOLARSHIPS

International students applying to Methodist University are automatically considered for merit-based scholarships. The scholarships offered are based on grades, test scores, and student involvement. Please note that the amount of scholarship varies with the maximum scholarship at 40% of the costs to study at MU for one year. Methodist University awards up to 30 semester-hours of credit for higher level IB examinations with scores of 5 and above. The student work program offers earnings up to \$1,500 per academic year.



## OTHER SCHOLARSHIPS AVAILABLE

**Pastor's Certificate:**  
Awarded to members of the Methodist Church: \$250 - \$1,000

**Greatest Gift: Referral scholarship by MU graduate:** \$250 - \$1,000

### UWC SCHOLARSHIPS

Provide 100% of tuition, housing, meals, books, health insurance, and activity fees

One time travel award/ SEVIS fee up to \$1,500

Taxes paid by MU

Student work programs offer earnings up to \$1,800 per academic year

### COST OF ATTENDANCE\*

Basic Fees (academic year)

Tuition: \$30,200

Room and meals: \$11,034

International insurance: \$1,200 (estimate)  
Fees for the Fall/Spring semester: \$400  
Books (\$500-\$800 per semester): \$1,600  
Comprehensive: \$43,000

\*The most up-to-date costs of attendance can be found on [methodist.edu](http://methodist.edu)\*

### INTERNATIONAL FINANCIAL AID

Scholarship Offered: Yes

Work Study Award: 100%

Int'l Students on Scholarships: 100%  
International Scholarships range from \$5,000 to \$23,000 per year

### UNDERGRADUATE PROGRAMS

Reeves School of Business  
School of Arts and Humanities  
School of Health Sciences  
School of Public Affairs  
School of Science and Human Development

### GRADUATE PROGRAMS

The Professional MBA at Methodist w/conc. In Healthcare Administration or Organizational Behavior & Leadership  
Master of Medical Science in Physician Assistant Studies  
Master of Justice Administration  
Master of Education

### CERTIFICATE PROGRAMS

Professional Writing Certificate  
Teaching English as a Second Language Certificate

# ACADEMICS

- The university offers four master's, six bachelor's (BA, BS, BFA, BSW, BM, BN), and two associate degrees.
- Top rated programs in business, golf management, tennis management, and resort and hotel management. We also have a successful forensic science program, and environmental and occupational management program, both with required course work in simulations and a disaster scene simulator. Other majors include nursing, accounting, computer Science, engineering, marketing, and global studies.
- Students can choose from among more than 80 degree majors and concentrations, 70 student organizations, and 20 varsity sports.
- Methodist University offers valuable support sources to enhance student's academic experience, including the Student Solutions Center, Tutoring and Writing Center, Center for Health and Personal Development, Career Services, and a state-of-the-art recreation center.



# HOUSING

We have found, and no doubt you will, value from the unique experiences that residence hall living provides. Our staff recognizes that residence hall living is an integral part of the educational process.

Whether you live in a traditional hall or suite, our commitment is to provide you with a healthy, clean and safe environment.

It is the policy of the University that, space permitting, all students who have earned 93 hours or less must live in University-operated residence halls unless they commute from the home of a parent or legal guardian. A local resident is defined as a person residing within 60 miles of the University. All requests for waivers of the policy must be directed in writing to the Director of Housing and Residence Life.

# STUDENT LIFE

- Modern housing facilities are spread throughout the 600-acre campus in a natural woodland setting, offering a fun and fulfilling residential life.
- Each residence offers 24-hour security, cable TV, wireless internet, and a resident advisor on each floor.
- MU offers 4 fraternities and 3 sororities.
- MU has 100 student clubs and organizations.

# INTERNATIONAL CLUB

The International Club provides an environment which promotes the culture of international students and makes the campus more aware of diverse cultures. Any member of the Methodist University community who has an interest in cultural diversity and international understanding may join. The International Club's activities include dinners, occasional field trips, movies, discussions, and attendance at local cultural and artistic celebrations.

# INTERCOLLEGIATE ATHLETICS

Methodist University has a proud tradition of excellence in intercollegiate athletics. We have one of the nation's finest NCAA Division III athletic programs with 20 varsity sports for men and women. Our facilities include two 18-hole golf courses with driving ranges, an eight-court tennis complex, a soccer field with a two-story field house, a football field and modern, rubberized track, top quality baseball and softball fields, outdoor volleyball and basketball courts, and cross country and fitness trails along the Cape Fear River.

## MEN'S SPORTS

- Baseball
- Basketball
- Cheer
- Cross Country
- Football
- Golf
- Lacrosse
- Soccer
- Tennis
- Track and Field

## WOMEN'S SPORTS

- Basketball
- Cheer
- Cross Country
- Dance
- Golf
- Lacrosse
- Soccer
- Softball
- Tennis
- Track and Field
- Volleyball

## CRIMP OFFERS

- Ballooning
- Dog Sledding
- Fitness Classes
- Kayaking
- Mountain Trips in Georgia
- Skiing
- Snowboarding
- Skydiving
- Trips to New York City
- Trips to New Orleans
- Trips to Washington, D.C.
- Trips to Florida
- White Water Rafting
- Windsurfing... and many more!

## OULIE CEESAY '13

Chemistry with a concentration in Biochemistry, Gambia

"Words can't easily sum up my experience at Methodist University. It is often said home is where the heart lies, and indeed my heart lies at Methodist University, my home... I have grown to appreciate what life has to offer, and every day is a boundless blessing upon another. Among all that I have to be thankful for in my life right now, being part of the Methodist University community tops my list."

## PHOR PHOUNG '14

Political Science with a concentration in International Relations, Cambodia

"I have always wanted to attend a big university because of all the opportunities and variety of activities; however, Methodist University has proven to me that a small liberal arts college can offer just as much, and in an even friendlier and warm environment. At Methodist University, I have been enriched as a student and have grown as a person, due to the quality of education and the amount of activities that I have been involved in."

## BLAIN ZEWDU MANALE '15

Biology, Ethiopia

"I am a senior at Methodist University. When I came as a freshman, the Methodist community received me with a warm and friendly welcome. The President, student body, faculty, and staff made my transition period easy by showing willingness to assist me with whatever I needed. In addition, during holidays, the staff offers trips to different places in the U.S., and I was fortunate enough to take part in those trips. Most importantly, Methodist University, through student led fellowships and Bible study meetings, has provided me with many opportunities to grow in my faith."





# MU ADMISSION REQUIREMENTS

Submit a completed application form.

## SUBMIT YOUR ACADEMIC RECORD.

All records should bear the original stamp or seal of the institution. Certified copies of the original document must be certified by the Embassy, the Ministry of Education, or the Ministry of Foreign Affairs. Students unable to provide documents that can be authenticated will be required to have school documents evaluated by a professional evaluation company such as World Education Services or Josef Silny and Associates, Inc.

## SUBMIT YOUR TOEFL SCORES TO US.

If English is not your first language. Our institutional code is 5426. Methodist University may admit TOEFL scores of 500 (PBT), 173 (CBT) and 61 (IBT) or IELTS scores of 5.5 or above.

## SUBMIT YOUR SAT TEST SCORES TO US.

Native speakers of English must submit a minimum SAT score of 900 - critical reading & math combined.

## SUBMIT YOUR 500-1000 WORD PERSONAL STATEMENT.

## SUBMIT YOUR FINANCIAL STATEMENT.

This can be either bank statements with the bank official's signature/seal, or a notarized or certified letter indicating sufficient funds of support in U.S. dollars. The document(s) must show a minimum of 6 months activity with that institution. Verification from more than one bank account can be used to prove full financial support.

## SUBMIT A COPY OF THE INFORMATION PAGE OF YOUR PASSPORT.

Transfer students must have all transcripts evaluated and translate into English before transfer credit decision can be made. Suggested evaluation services are: World Education Services, Inc. ([wes.org](http://wes.org)) and Josef Silny & Associates, Inc. ([jsilny.com](http://jsilny.com))  
UWC Students may submit the common application and 2 references.

Methodist University awards up to 30 semester-hours of credit for the high level of 1B examinations with scores of 5 and above.

# CONTACT INFORMATION



## **LYLE SHEPPARD**

Director International Programs  
lsheppard@methodist.edu  
910 630 7225  
United States of America  
*"I speak French"*



## **JENNIFER RAMOS**

Assistant Director Study Abroad  
jramos@methodist.edu  
910 630 77159  
United States of America/Chile  
*"I speak Spanish"*



## **HUSSAIN AL RADHI**

Admissions Specialist  
halradhi@student.methodist.edu  
910 630 7049  
Saudi Arabia  
*"I speak Arabic"*



## **ALINA PAYANKOVA**

International Programs Coordinator  
apayankova@methodist.edu  
910 630 7432  
Belarus  
*"I speak Russian and Italian"*



## **OLGA POLYAK BOOTH**

Admissions Assistant  
opolyak@methodist.edu  
910 630 7049  
United States of America/Russia  
*"I speak Russian"*

Methodist University | 5400 Ramsey Street | Fayetteville, NC 28311-1498  
[methodist.edu](http://methodist.edu) | [facebook.com/MethodistUniversity](https://facebook.com/MethodistUniversity)



Methodist University does not discriminate on the basis of age, race, gender, national or ethnic origin, religion, sexual orientation or disability for otherwise qualified persons in the administration of its admissions, educational policies, scholarships, loan programs, athletics, employment, or any other university sponsored or advertised program.

