



CONTENTS

1	Welcome
6	Locations
14	International
16	Fees
18	The great outdoors
20	Help is at hand
24	Quality counts
26	Employability
28	Top tips
30	Accommodation
40	Open days
	The essentials
42	Course listings by location
46	Entry requirements
50	Making your application
53	Course key
54	UCAS tariff points
	Our courses
58	Business and computing
68	Creative arts
84	Education
92	Forestry and outdoor
100	Health and social care
114	Humanities
122	Law and social sciences
128	Performance
138	Policing
150	Sport
158	Course index
160	Course enquiries
162	The small print

WELCOME



“We are totally focused on providing degrees with rigorous academic standards that equip you for your chosen career in our fast changing world, and with a wide portfolio of courses, I am sure we have the right degree for you”

When you graduate in 2017, what will the world be like? It will be a world of opportunities, for knowledgeable and enthusiastic graduates. The challenges facing the world will be fertile ground if you want to make your mark in the UK, Europe and worldwide. That’s why I am glad you have a copy of our prospectus. We are totally focused on providing degrees with rigorous academic standards that equip you for your chosen career in our fast changing global economy, and with a wide portfolio of courses, I am sure we have the right degree for you.

The programmes are led and taught by academics who have strong experience across teaching, research and real career experience outside university. We enhance the relevance of our degrees to the world of work by adding in a range of practical benefits including opportunities for placements, professional body accreditation, volunteering and study-abroad options.

We also make sure that our university is a place conducive to learning. Our campuses and sites are small and friendly with excellent library facilities including extensive digital resources accessible 24/7. Support services are there when you need them, our degrees are very good value and living costs are modest when compared to large cities. The world really is your oyster; let us help you start your career journey.

With best wishes

Professor Peter Strike
Vice Chancellor

WELCOME



“Coming to university is about beginning the next big adventure of your life.

Whatever your age or background, by the time you finish your degree you will have changed and grown.”

Studying as an undergraduate at the University of Cumbria was a real adventure!

I arrived in Cumbria knowing that the university would strive to be the best that it could be and make my experience as a student as fruitful as possible. At the University of Cumbria Students' Union (UCSU) we want to ensure that you have the best experience possible at the University of Cumbria, from sports teams and societies to getting the most out of your chosen course.

Coming to university is about beginning the next big adventure of your life. Whatever your age or background, by the time you finish your degree you will have changed and grown. UCSU will be right there with you, helping you to shape your education at the University of Cumbria.

At UCSU we know that it's important to have fun at university, it's important to make new friends and it's important to have support there when you need it. That's why our motto, “Working for a better education for you,” is at the heart of everything we do at UCSU. When you come to the University of Cumbria you are joining a community, regardless of which UoC site you are based on. In my role as a Sabbatical Officer I regularly travel to most UoC sites and campuses. Every campus has its challenges, but every campus offers unique and exciting opportunities which will shape the next chapter of your education.

We're confident that in this prospectus you will find what you are looking for, and we look forward to meeting you next year.

Matthew Hayhurst
UCSU Union Community Sabbatical Officer

GET INVOLVED

The University of Cumbria Students' Union supports a wide range of student groups, sports teams and activities.

We are happy to support you to do the things you are interested in. If we don't offer something already, then we are probably just waiting for you to come and get the ball rolling!

For more information or to get involved visit www.ucsu.me

Just some of the groups we support:

- Athletics
- Badminton
- Basketball
- Body conditioning and lyrical dance
- Bushcraft
- Cheerleaders
- Creative arts
- Cricket
- Dance
- Football—men's and women's
- Gaming and roleplay
- Hockey
- Islamic society
- Karate and self defence
- Mountain biking
- Netball
- Paddling
- Psychology
- Rugby League—men's and women's
- Rugby Union—men's and women's
- Salsa
- Sensoc
- Spectrum—lesbian, gay & bisexual society
- Trampolining
- Wildlife photography



UCSU

MADE UP OF U

Introducing your Cumbria Experience

Becoming part of the University of Cumbria means taking the next step towards the career of your choice.

We are fully committed to providing a first-class education and an outstanding student experience in a flexible and supportive learning environment.

It is our mission to provide you with the skills and tools you need to succeed in a challenging and evolving world, both now and in the future.





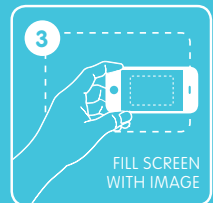
BRING THIS PAGE TO LIFE
WITH THE FREE AURASMA APP



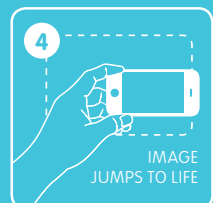
DOWNLOAD THE FREE AURASMA APP ONTO YOUR APPLE OR ANDROID DEVICE



SEARCH FOR UNIVERSITY OF CUMBRIA AND FOLLOW OUR CHANNEL



OPEN THE APP AND HOLD YOUR DEVICE OVER ANY PAGE WHERE YOU SEE THE AURASMA LOGO



DISCOVER EXTRA CONTENT FROM VIDEOS TO QUICK WEBSITE LINKS

Our locations

We have four campuses and three sites and they all have their own special character.

Our campuses are in Carlisle Fusehill Street, Carlisle Brampton Road, Lancaster and Ambleside and our sites are at Energus Workington, Tower Hamlets, London and Furness College, Barrow-in-Furness.

CUMBRIA FACTS:

Home to 12 of the
most BEAUTIFUL
lakes in England



...all
manufacture



in Cumbria





CARLISLE

WORKINGTON

AMBLESIDE

BARROW-IN-FURNESS

LANCASTER

LAKE DISTRICT NATIONAL PARK

Carlisle

With two campuses in Carlisle you are spoilt for choice: we have one at Fusehill Street and one at Brampton Road. There are many hidden gems in this city ready to be discovered.

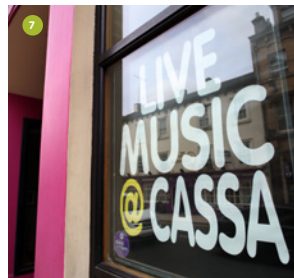
Carlisle has an excellent array of shops and independent stores as well as an abundance of places to eat and drink. With the Lake District only half an hour away and fast links to the rest of the country via the M6 and West Coast Main Line railway it's easy to get to Newcastle, Manchester or Glasgow.

Fusehill Street campus

Our Fusehill Street campus is just a 10-minute walk from the railway or bus station and contains a great range of facilities including our Students' Union, library, halls of residence, sports centre and a Learning Gateway building, all set in a mixture of beautiful Victorian and modern buildings.

Brampton Road campus

Our Brampton Road campus is home to our arts courses and also contains halls of residence, a library, our own theatre (which is open to the public) and all the facilities you need to get your creative juices flowing.



1. Fusehill Street 2. Carlisle city centre 3. Students at Fusehill Street 4. Brampton Road campus 5. Students at Fusehill Street 6. Tullie House Carlisle 7. Botchergate, Carlisle 8. Carlisle Cathedral 9. Carlisle Castle



Carlisle is the happiest place to live in Britain.

Rightmove survey 2012

2013
OPEN DAYS
FUSEHILL ST
& BRAMPTON RD
08 JUNE
05 OCTOBER
01 NOVEMBER



Lancaster

A city with two universities and a large student population makes Lancaster a welcoming, vibrant place with a thriving arts and music scene.

With excellent transport links, Lancaster is easy to reach and our campus is only a 10-minute walk from the city centre. Campus facilities and services are extensive including halls of residence, a sports centre and the Students' Union. Great food and drink are readily available, including our restaurant The View which comes with panoramic views of Morecambe Bay and the Lake District. Williamson Park is also close to campus and a perfect place to revise or just chill-out on a sunny day. Lancaster—a great student city with lots going on!



Lancaster is in the top three of the safest student cities in England, Wales and Northern Ireland.

Complete University Guide 2012.

1. Students at Lancaster campus 2. View across Lancaster from Castle Hill 3. Students outside The Keep 4. Lune Millennium Bridge 5. Williamson Park (adjacent to campus) 6. Lancaster Canal 7. Lancaster campus chapel 8. Students at Lancaster campus 9. Market Square and the city museum

2013
OPEN DAYS
LANCASTER
15 JUNE
28 SEPTEMBER
30 OCTOBER



Ambleside

What makes Ambleside a great place to live is that it's in the heart of the Lake District! If you enjoy watching the sun set over a lake, or riding a mountain bike down stunning fells, then Ambleside is the place for you. You will find a range of study facilities, eResources available 24/7 and a climbing wall, as well as the campus housing the Institute for Leadership and Sustainability. The town is very pretty and attracts lots of visitors from around the world. It's served by regular bus services and arriving by car is also straightforward, with Ambleside about 30 minutes drive from J36 of the M6.



Our other sites

FURNESS

Our site in Furness is only 30 minutes from the Lake District National Park on a site close to the sea-shore in Barrow-in-Furness. We are based in the striking new £42 million Furness College campus. It's a great place to study with a number of our health and social work courses offered there.



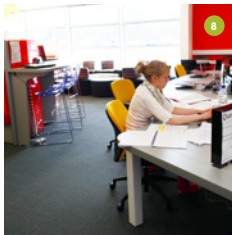


1. Student at Ambleside in the Lake District
2. Charlotte Mason building, Ambleside
3. Walking near Ambleside
4. Furness College, Barrow-in-Furness
5. Energus building
6. Energus facilities
7. Lecture theatre at Energus
8. Study space, Energus
9. Tower Hamlets.



WORKINGTON

Our courses are offered at the state-of-the-art Energus building. Facilities are excellent and include our Learning Gateway. It has extensive opening hours and is networked to a large range of eResources. Catering is on site and includes Starbucks coffee. Workington can be reached by rail or road and is a great location, close to the sea and Lake District mountains.



LONDON

Our London site is located in Tower Hamlets, the host borough of the London 2012 Olympic and Paralympic Games, and is wholly focused on initial teacher training and post-qualification teacher training. It's easy to get to, being just a few minutes walk from Mile End Tube station. Students have access to Tower Hamlets schools library services and the library at Queen Mary University of London as well as e-resources 24/7 and the use of our online, collaborative learning platform, Blackboard. Close by, you can take time out in Mile End Park, enjoy fine art in the Mile End Art Pavilion, and take in the Georgian splendour of Tredegar Square with well-preserved central gardens.







International

The University of Cumbria offers a warm welcome to students from all over the world. We have an excellent graduate employability record and great support within safe environments. Our students from overseas tell us that they choose us because they want a personal experience and receive this on our small and friendly campuses in the cities of Carlisle, Lancaster and Ambleside. All are easy to get to and have a welcoming character.

Our students also say they like the fact that we have a diverse student population. As well as our UK students, students from Asia, Australia, Europe, Africa and North and South America have chosen us. Located in the North of England all campuses are easily reached from Manchester or Newcastle airports. Our vibrant cities of Carlisle and Lancaster are fantastic places to live and each has excellent rail and motorway links that can get you to the cosmopolitan cities of London, Manchester, Newcastle and Edinburgh quickly and easily.

Carlisle is also located near to one of the most beautiful regions of the UK, the Lake District,

attracting millions of visitors each year to the world-renowned National Park. The park, with its stunning landscape of mountains and lakes, has a strong literary heritage. Some of Britain's most famous writers and poets found their inspiration here—the children's writer Beatrix Potter, John Ruskin and perhaps our most famous poet, William Wordsworth, who wrote *Daffodils* in 1802—and perhaps you will. Ambleside is in the heart of the Lake District and is a pretty, picturesque small town. The cost of living in Carlisle, Lancaster and Ambleside is less than studying in other locations so your budget goes further.

Affordable university study

When you study at the University of Cumbria you are investing in your future. The costs of your degree study are affordable. Here's how.

You don't have to pay tuition fees upfront so **you study now and pay later.**

This means repayments are based on what you earn, not what you owe.

This means that a student from a typical background, living away from home whilst they study, would receive over £5,000 in maintenance loan and grant. And that's in addition to the tuition fee loan. The maximum loan and grant payable is over £7,000 and the minimum is nearly £4,000 —what you are entitled to depends on your household income.

You only start repaying once you start your career. Even then the terms are modest. You will pay around about **£30 per month if your starting salary is £25,000** and it comes straight out of your salary automatically so no messy payment arrangement to make.

To cover your living costs including accommodation while you study with us, you apply for a maintenance loan. Many students are also eligible for a maintenance grant which is not repayable.

If your salary starts at less than £21,000, you don't make any repayments. Repayments only start when your salary exceeds £21,000.

And that's not all. We have a range of discretionary **bursaries and scholarships to further offset the costs.** To find out more contact enquirycentre@cumbria.ac.uk or call **0845 6061144.**

Fees

UNDERGRADUATE DEGREES

BA (Hons)	£8,250 per year
BSc (Hons)	£8,250 per year

Includes a discount of
£750 for every student

INITIAL TEACHER TRAINING DEGREE

BA (Hons)	£9,000 per year
Foundation	£6,200 per year degree

Information based on 2013 entry and correct at January 2013.

Please check www.cumbria.ac.uk/fees for up-to-date information.

EARN UNDER £21,000 A YEAR WHEN YOU GRADUATE AND PAY NOTHING UNTIL YOUR SALARY RISES.

NHS BURSARY SCHEME

If you study a degree in Radiotherapy, Nursing, Physiotherapy, Occupational therapy or Midwifery, you benefit from:

- tuition fees paid for by the NHS
- a non-income assessed, non-repayable grant
- a means-tested bursary
- a reduced rate of student loan.



The full details are at www.cumbria.ac.uk/finance or request our fees and funding booklet by emailing our Enquiry Centre on enquirycentre@cumbria.ac.uk or calling on **0845 6061144**.

WHERE BETTER TO STUDY THE GREAT OUTDOORS, THAN IN THE GREAT OUTDOORS.

Turn to pages **92-97** for our
Forestry and Outdoor courses





SCRATCH 'N' SNIFF

...to experience
the great Cumbrian
outdoors*

*Or you could pay us
a visit to experience
things first hand.

www.cumbria.ac.uk/outdoor



Help is at hand

— services to support your university life

Where do we start? Our support services are second to none. We make sure help is available when you need it. When you study with the University of Cumbria, you will have access to friendly advice about your course, academic skills development, your wellbeing, university life in general and your future career direction. We really are ready to help.

Support is provided in a number of ways: it can be in person, online or on the phone. All the details are at www.cumbria.ac.uk/support or request our *Help is at Hand* booklet by calling **0845 6061144** or enquirycentre@cumbria.ac.uk

Support for your university life

- Student finance—clear advice about the cost of your course and the funding help available.
- Accommodation—want to live in a hall of residence or off campus? Our expert accommodation team are ready to advise.
- Students' Union—representing your interests and making sure your voice is heard. More at www.ucsu.me
- International students—we will help you make sure that your application to study with us is hassle-free.

Your wellbeing

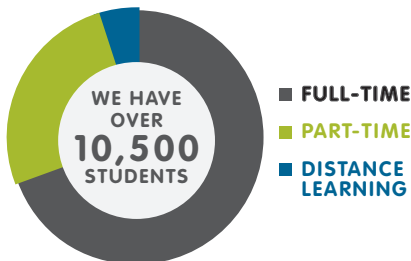
- Mental health and counselling—it's good to know that if you have any concerns about your mental wellbeing, we have a confidential service that is not judgemental and is focused on improving your wellness.
- Disabilities and Specific Learning Difficulties (SpLD)—our advisers will help you to identify the support you may be entitled to.
- Managing your money—you're not on your own when it comes to managing your money effectively. The Money Doctors service provides realistic advice.
- Sports activities available—with a range of facilities on campus and sites, taking a break from study is good for body and soul.



Spiritual support from your Chaplaincy Team

Having a Church of England Foundation, the University of Cumbria regards spiritual development as one of its key values. The chaplaincy team are here to express that value by helping you discover what it means to live life in all its fullness during your time at university. We are here to offer encouragement and support whenever you need it, to help you to enjoy community life within the university and to create opportunities for you to explore the Christian faith. Alongside our Christian chaplains, the team is currently enriched by two honorary Muslim chaplains who actively support our Muslim students and staff.

For more information, including details of our provision across the spectrum of faith, visit www.cumbria.ac.uk/chaplaincy



Your course

We make course registration and administration easy when you join us and you can update and monitor your details online 24/7. We'll tell you more about this before you join us.

Personal tutor and module tutors

We really want you to meet and exceed your academic goals. You will work hard to do this and your personal and module tutors will be there to help you do this. Here's what they can do for you.

- Your personal tutor can give you valuable guidance, answer course or study queries, advice on academic writing and give feedback on your assessed work, and can refer you on to other professionals in the university who can help. We have extensive online resources to aid your academic study skills.
- Talk over your ideas for your placement.
- Signpost help for personal issues that may be affecting your ability to study effectively. www.cumbria.ac.uk/skills



Your academic skills

- Academic writing—we've mentioned the great online help at www.cumbria.ac.uk/skills
- Library services—make sure you make the most of your library from printed books to large online resources including eBooks. Don't forget to take in one of the library familiarisation sessions to get the best out of the service.
- We have lots of subject-specific resources whatever your chosen course. They include business subject librarians and dedicated web pages. Please take a look at www.cumbria.ac.uk/subjectresources to select your subject and explore from there.
- Referencing and avoiding plagiarism—good advice on how to reference your work and avoid accusations of plagiarism. More at www.cumbria.ac.uk/learning
- IT and digital skills—we have the right, up-to-date ICT facilities to support your study, including an online learning environment called Blackboard and an online portfolio tool called Pebblepad. See www.cumbria.ac.uk/skills for more information.

Your future

- Career planning – it's never too early to start planning your career post-graduation so make use of our great career-planning tools. Please see www.cumbria.ac.uk/careers

How to stand out in a crowd

Getting noticed in the careers market shouldn't be left to chance. Having a plan will assist your career aspirations.

We can help with:

- career planning
 - organising a gap year
 - further study options
 - work placement opportunities
 - job search skills
 - CVs and application forms
 - interviews and assessment centres.
- More at www.cumbria.ac.uk/careers



Disability and SpLD support

If you have a disability, specific learning disability (SpLD), medical condition or long-term health issue that may affect your ability to study and participate in university life, we can help in a number of ways.

The University of Cumbria follows the frameworks of relevant professional bodies such as the National Association of Disability Practitioners (NADP), and our academic policies and processes offer an ethical service based on academic integrity and empowerment for individual students.

Your first step as a prospective student is to allow us to help you through the application process. We will then track your progress through the process to make sure appropriate preparations and adjustments are made at each stage of your student journey. This will start when you first visit us on an interview or applicant day. A specialist adviser will be on hand to talk over issues of interest to you if you wish.

The Students' Union

The Students' Union Information and Advocacy Service provide independent support and advice for a range of disability and equality of access concerns, work, adjustments to course delivery and assessment, tutor feedback and accessing support while on placement.

Please see www.ucsu.me

All welcome

We welcome your application whatever your circumstances. If you are enthusiastic, we want to hear from you.





STUDENT TO
STAFF RATIO



17:2

Quality counts

All qualifications offered at the University of Cumbria are rigorously quality assessed to ensure that we are offering you a programme designed to give you the skills, knowledge and experiences to prepare you for the world of work.

We have uncompromising academic standards, and have been awarded the highest level of approval for the quality of our awards from the Quality Assurance Agency for Higher Education. What this means is that you can be confident that our degrees are of the highest calibre. We live by the highest academic standards and your degree is regarded as a mark of quality by prospective employers. For more information on our outstanding quality please visit www.cumbria.ac.uk/quality



**SUPPORT FROM OUR
EXPERIENCED AND
PROFESSIONAL STAFF**

Employability

When we design courses, we make sure that your employability is in the forefront of our minds. That's why nine out of ten of our students begin their careers or further study within six months of graduating. We also ensure your degree has lots of added value to make your aspirations achievable—for example, placements and work experience.



Chris

“My role as student ambassador is very varied. One day I can be showing prospective students and parents around the campus, the next I can be working in schools promoting the university with university staff. I have also worked on open days and answered phone calls from prospective students and, what's more, it's a paid role. It's allowed me to enhance my people and team-working skills which will be beneficial for life after university”

Christopher Atkins
BSc (Hons) Sport and Exercise
Sciences student and Student
Ambassador

9/10



OF OUR
 STUDENTS ARE
 IN EMPLOYMENT
 OR FURTHER
 STUDY, SIX
 MONTHS AFTER
 GRADUATING

*DLHE survey-average of last three years' results.



Placements – putting theory into practice

Many of our degrees have placement periods built in as standard—some of these include subjects with a strong vocational focus, such as teaching and health profession degrees. Some degrees, such as English and Law, also include employability skills content to prepare you for the world of work. For more details of the placement opportunities offered on the course you are interested in, please visit www.cumbria.ac.uk/courses

Study abroad

Studying part of your course abroad is an exciting prospect. The benefits include experiencing a new culture, making new friends and widening your life experience. Just as importantly, studying a part of your course overseas will demonstrate to future employers that you have additional get-up-and-go. It's an option available for many of our students and involves spending a semester studying at one of our partner institutions. Our partners are located in Europe, USA, Asia and Australasia. We also have a number of opportunities to attend summer schools operated by our partner institutions. More information at www.cumbria.ac.uk/studyabroad

Volunteering

Contributing in your own way to a community or voluntary project can be deeply satisfying. Your public-spiritedness will also stand out on a CV, alerting potential employers to your commitment and personal qualities.

The Students' Union have a dedicated volunteering team to help you find the right placement. For more details visit www.cumbria.ac.uk/studentlife or speak to a university careers adviser, who will be happy to help.

Working for us

Working as a Student Ambassador for the university enables you to work with other like-minded students. It comes with a good rate of pay and provides valuable employment experience that will look good on your CV. We recruit ambassadors every year—the role is varied and includes working on open days where you could be conducting campus tours for prospective students, or answering queries and giving a real student insight into life at the university. More information at www.cumbria.ac.uk/studentambassadors

Careers services

Our extensive range of career support services will enhance your career opportunities. Our team of experts can provide a helping hand to make sure you are in the best possible position when you begin making job applications. The service includes career planning, enhancing employability opportunities, job vacancy search strategies, writing job applications and preparing for interviews. We also arrange a number of campus career events each year where we bring together students and potential employers. A comprehensive range of careers advice is available 24/7 via our online learning environment Blackboard. Please find more information at www.cumbria.ac.uk/careers

TOP TIPS FOR SURVIVING UNI:



.....
BY SAM DINSLEY
STUDYING BSC
(HONS) APPLIED
PSYCHOLOGY

Nº 1.

The most important tip for surviving at university is to make a budget!

Plan a weekly or monthly budget and write down each payment you make from your student loan/grant, such as utility bills, food and books and then make a separate budget for money which you're able to spend on extras, nights out, travel etc each week.

Nº 2.

Keep on top of each assignment you get—buy a diary or a planner and write down deadlines ... make sure you're organised. It helps so much!

Nº 3.

Buy an NUS card and a railcard (if you don't already have one)—they seriously save you so much money in the long run and the NUS card gets you discount almost everywhere!

Nº 4.

Stay safe on nights out—remember, you're in a new city (or even a new country!) so stay with groups of friends and use common sense by keeping money and other personal belongings safe.

Nº 5.

Make sure you buy a TV licence.

Nº 6.

Learn to cook basic recipes that you can make in bulk and freeze, such as spag bol, because this makes life so much easier.

Nº 7.

Don't be lazy; it's tempting to skip a lecture after a night out but don't! Remember, you're paying money to attend university and your attendance counts towards your degree, so you may be a bit tired, but you should still go to lectures!

Nº 8.

Research the local area—there are loads of cheap places to eat and drink which do student deals—and also see where the local clubs are.

Nº 9.

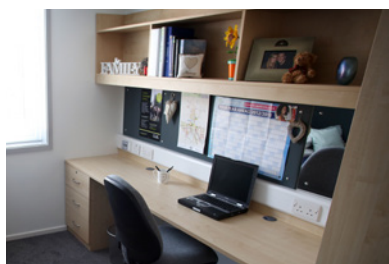
Go to freshers' fair! It gives you the opportunity to enrol in sports, clubs and societies.

Nº 10.

Register with your local doctor—better to be safe than sorry!

A home from home

With around a thousand rooms available across our campuses and access to trusted private accommodation, we can help you find your perfect home from home. Take a 360° tour at www.cumbria.ac.uk/accommodation



Facilities key



Adapted rooms for students with mobility or hearing impairments



Central heating, water, light and heating costs are included in the rent



Broadband internet access via wireless and/or ethernet (connection fee included in rent)



Senior Residential Co-ordinator/Warden on site



Domestic services clean the communal kitchen, bathroom areas and hallways weekly



Coin-operated laundry facilities



Bike store on site

Carlisle

We have nearly 200 rooms in our Carlisle residences, providing a mix of en-suite and shared facilities accommodation.

Bedrooms are organised into flats, each with a shared kitchen area. Broadband internet is available at all our residences (through ethernet and/or wi-fi connection). On-site amenities include laundry facilities, secure bicycle stores and recycling bins. All our residences are located within short walking distance of the city centre and campuses. We also have good-quality, affordable, centrally heated, furnished houses close to our sites which the university rents on your behalf.



WHAT'S NEARBY?

- City centre—15-min walk
- Rickerby Park—5-min walk
- Learning facilities—150 metres
- Dining facilities—250 metres

Brampton Road

Brampton Road halls of residence are self-catering flats adjacent to the campus.

Facilities

- 113 bedrooms organised into flats accommodating between four and seven students.
- 37 single en-suite rooms.
- 76 standard single rooms with shared bathroom facilities.
- Each bedroom is fully furnished with a single bed, bedside cabinet,

wardrobe with full-length mirror inside, desk with drawers, shelf unit, desk chair, lamp, litter bin and poster boards.

- Each flat has a fitted kitchen with a cooker, fridge, freezer, microwave, kettle and toaster. There is either a breakfast bar or dining table with seating.



WHAT'S NEARBY?

- City centre—15-min walk
- Learning facilities—on campus
- Sports facilities—on campus
- Dining facilities—on campus
- Students' Union bar—on campus

Fusehill Street —Carrock Halls

Carrock Halls is a new, modern and stylish student residence consisting of self-catering flats.

Facilities

- 85 en-suite bedrooms organised into flats accommodating between five and nine residents.
- Each bedroom is fully furnished with a single bed, bedside cabinet, wardrobe with full-length mirror inside, desk with drawers, shelf unit, desk chair, lamp, litter bin and poster boards

- En-suite shower room provides a shower, toilet and wash hand basin.
- Communal kitchen (either a breakfast bar or dining table with seating) with a cooker, fridge, freezer, microwave, kettle and toaster.
- Television socket in every bedroom (you will need a TV licence).
- Overnight security cover on campus.





WHAT'S NEARBY?

City centre—20-min walk

Bitts Park—15-min walk

Brampton Road campus—40-min walk

Fusehill St campus—20-min walk

Caldewgate—10-min walk

Denton Holme student village

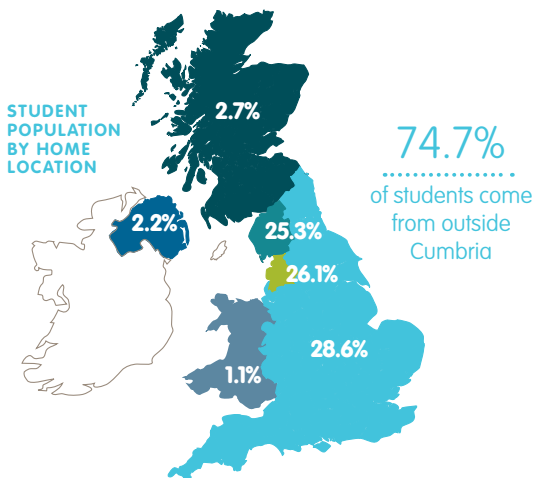
This new-build accommodation is located in the Denton Holme area of the city.

Facilities

- 249 rooms within 25 town houses. Each house accommodates either nine or 12 residents.
- Bedrooms are fully furnished with a single bed, large built-in desk with drawers, wardrobe with full-length mirror, shelf unit, desk chair, lamp, litter bin and poster boards.
- There is a TV and internet socket in each room.
- Each house has communal space on the ground floor, plus one en-suite room in the nine-bed houses.

There are two or three upper floors, depending upon whether it's a nine- or 12-bed property, each with four bedrooms and two shower rooms.

- Each house has a fitted kitchen with cooker, fridge, freezer, microwave, kettle and toaster. There is either a breakfast bar or dining table plus a communal area with seating.
- Resident parking is available at the halls.
- The village is on direct bus routes to the Brampton Road campus, is a 10-to-15 min walk from the Fusehill Street campus and is linked via a cycle path.







Lancaster

We have over 500 rooms in our Lancaster residences, all within a short distance of the university and city centre.

Four of our residences are located on campus, a mix of old and new buildings set in their own parkland. Our fifth residence is a converted mill and is part of Lancaster's attractive canal-side development.



WHAT'S NEARBY?

- City centre—10-min walk
(downhill on the way there!)
- Library and learning facilities
—on campus
- Dining facilities—on campus
- Students' Union—on campus

Gressingham and Sarah Witham halls of residence

Gressingham and Sarah Witham halls of residence are situated right in the heart of the Lancaster campus. They offer catered, single study bedrooms.

- Each floor has a shared pantry-style kitchen, with a cooker, fridge, freezer, microwave, kettle and toaster.
- Separate toilet, bathroom and shower facilities.

Facilities

- 57 single study bedrooms
- Each bedroom is fully furnished with a single bed, wardrobe and desk—and most rooms have a washbasin.





WHAT'S NEARBY?

City centre—250 metres
(Downhill all the way!)

Learning facilities—15-min walk

Sports facilities—15-min walk

Dining facilities—15-min walk

Students' Union—15-min walk



WHAT'S NEARBY?

City centre—10-min
walk downhill

Library and learning
facilities—100 metres

Sporting facilities—200 metres

Dining facilities—150 metres

Students' Union—350 metres

Mill Hall

Situated on the Lancaster Canal this restored mill is minutes from the lively town centre and less than 15-minute walk from the campus. The accommodation is self-catering with single bedrooms and shared facilities.

Facilities

- 93 single study bedrooms and one twin bedroom.

- Each bedroom is fully furnished with a single bed, wardrobe, and desk—and most rooms have a washbasin.
- Each floor has a shared kitchen/ diner with a cooker, fridge, freezer, microwave, kettle and toaster.
- Separate bathroom, toilet and shower facilities.



Waddell Hall

Waddell Hall is the largest hall of residence on the Lancaster campus with catered, single study bedrooms, arranged into flats for six to seven students.

Facilities

- 250 single study bedrooms organised into 36 flats
- Each bedroom is fully furnished with a single bed, wardrobe and desk.





WHAT'S NEARBY?

City centre—10-min walk downhill from campus

Library and learning facilities—on campus

Sporting facilities—on campus

Dining facilities—on campus

Students' Union—on campus

William Thompson Hall

William Thompson Hall is a landmark on the skyline of Lancaster being one of the few tower blocks in the city. It comprises study rooms, catered only.

- Each floor has a shared kitchen/diner with a cooker, fridge, freezer, microwave, kettle and toaster.
- Separate bathroom, toilet and shower facilities.

Facilities

- 104 single study bedrooms and one twin bedroom.
- Each bedroom is fully furnished with a single bed, wardrobe and desk—and most rooms have a washbasin.



Ambleside

As part of our plans for development of the Ambleside campus, enhanced student accommodation will be available. The latest information on accommodation can be found on our website

www.cumbria.ac.uk/accommodation



London

There is a wide range of accommodation offered by private landlords. London StudentPad is the best website to find your type of accommodation.

www.londonstudentpad.co.uk



University-managed houses

Good-quality, affordable, centrally-heated, furnished houses close to campuses in Carlisle and Lancaster, which the university rents on your behalf. The benefits are:

- All houses have fully fitted kitchens with a cooker, microwave, washing machine, fridge/freezer, toaster and kettle.
- All bedrooms have the minimum of a bed, wardrobe, drawers, desk, lamp and chair.
- All houses have modern bathroom and shower facilities.
- Assistance/advice available 24 hours a day, seven days a week via the university reception.
- Rent is paid direct to the university.
- Your university accommodation officer acts as your landlord.
- No summer retainer to pay.
- Houses are within easy walking distance of university campuses.
- All landlords are accredited with Carlisle City Council, which means that they meet the relevant health and safety requirements.



Living off campus

There is a good choice of reasonably priced homes and private halls of residence around our campuses. Most students live off campus after the first year, and some new students prefer to do so from the start.

We only advertise or lease properties owned by landlords who have been accredited by the council and have had their properties inspected to ensure they meet statutory safety regulations. Our accommodation officers will help you find a home.

Private-sector properties

- Houses are within walking distance of university campuses.
- All landlords are accredited with the local council, which means that they meet the relevant health and safety requirements.
- Weekly rents range from £55.00 to £95.00, excluding bills.
- Fully furnished and equipped properties offering good standard student accommodation in the private sector.
- Assistance/advice available from the university. We also advertise houses in the local area owned by private landlords through Cumbria StudentPad. We know moving out of halls is a big step, so we organise househunting help days. You can meet other students, receive guidance from a buddy (a second- or third-year student), view accommodation and question prospective landlords.

OPEN DAYS 2013

Make a day of it by bringing along family and friends—we are sure you will like what you find. Please book online at www.cumbria.ac.uk/opendays

Find out what it's really like studying at the University of Cumbria by joining us on one of our open days.

Carlisle, Brampton Road

Saturday 08 June
Saturday 05 October
Friday 01 November

Carlisle, Fusehill Street

Saturday 08 June
Saturday 05 October
Friday 01 November

Lancaster

Saturday 15 June
Saturday 28 September
Wednesday 30 October

Tower Hamlets, London

Wednesday 25 September
Wednesday 13 November

Energus, Workington

Wednesday 10 July

Ambleside

Saturday 15 June
Saturday 28 September
Wednesday 30 October

Call us on 0845 6061144
visit www.cumbria.ac.uk/opendays



twitter.com/cumbriauni



facebook.com/universityofcumbria



Course listings by location

Ambleside	Award	Study
Animal Conservation Science (with or without placement)	BSc (Hons)	F P
Applied Science	FdSc	F P
Applied Science (Top-up)*	BSc (Hons)	F P
Conservation Biology (with or without placement)	BSc (Hons)	F P
Forensic Science*	FdSc	F P
Forensic Science (Top-up)	BSc (Hons)	F P
Forest and Woodland Management (with or without placement)	BSc (Hons)	F P
Forestry	FdSc	F P
Forestry (Top-up)	BSc (Hons)	F P D
Forestry and Woodland Conservation (with or without placement)	BSc (Hons)	F
Outdoor Education	FdA	F P
Outdoor Education (Top-up)	BA (Hons)	F P
Outdoor Leadership	BA (Hons)/BSc (Hons)	F P
Outdoor Studies (Environment)	BSc (Hons)	F P
Outdoor Studies	BA (Hons)	F P

Carlisle (Brampton Road)	Award	Study
Adventure and Media	BA (Hons)	F P
Art of Games Design, The	FdA	F P
Dance Performance and Drama Performance*	BA (Hons)	F P
Dance Performance and Musical Theatre Performance*	BA (Hons)	F P
Digital Arts (top-top)	BA (Hons)	F P
Drama	BA (Hons)	F P
Drama Performance and Musical Theatre Performance	BA (Hons)	F P
Event Management (Top-up)	BA (Hons)	F P
Film and Television Production*	BA (Hons)	F P
Film and Television Production (year 0)*	BA (Hons)	F
Fine Art	BA (Hons)	F P
Fine Art (year 0)	BA (Hons)	F
Graphic Design	BA (Hons)	F P
Graphic Design (year 0)*	BA (Hons)	F
Illustration	BA (Hons)	F P
Illustration (year 0)*	BA (Hons)	F
Journalism	BA (Hons)	F P
Mass Communications (Top-up)	BA (Hons)	F

MODES OF STUDY

.....

F Full-time

P Part-time

D Distance Learning

Courses marked * are subject to validation.

For more information on validation see page 59.

Performance, Festivals and Events*	FdA	F	P	
Performing Arts*	BA (Hons)	F	P	
Photography*	BA (Hons)	F	P	
Photography (year 0)*	BA (Hons)	F		
Production (with pathways) (Top-up)	BA (Hons)	F	P	
Technical Theatre	FdA	F	P	
Wildlife and Media	BA (Hons)	F	P	

Carlisle (Fusehill Street)	Award	Study		
Applied Psychology	BSc (Hons)	F	P	
Criminology and Law	BA (Hons)/DipHE	F	P	
Criminology and Social Sciences	BA (Hons)/DipHE	F	P	
Computing and IT (Final year award)*	BSc (Hons)	F	P	
Early Years Education with QTS (3-7 year olds)	BA (Hons)	F		
Law*	LLB	F	P	
Management and leadership in Health and Social care (Top-up)	BSc (Hons)		P	
Midwifery	BSc (Hons)	F		
Nursing (Adult)	BSc (Hons)	F		
Nursing (Child)	BSc (Hons)	F		
Nursing (Learning Disability)	BSc (Hons)	F		
Nursing (Mental Health)	BSc (Hons)	F		
Occupational Therapy	BSc (Hons)	F		
Physical Education	BA (Hons)/DipHE	F	P	
Physiotherapy	BSc (Hons)	F		
Policing*	FdSc	F	P	
Policing, Investigation and Criminology	BSc (Hons)/DipHE	F	P	
Practical Theology*	FdA		P	
Practical Theology (Top-up)*	BA (Hons)		P	
Practice Development (Top-up)	BSc (Hons)		P	
Primary Education with QTS	BA (Hons)/BSc (Hons)	F		
Primary Education with QTS (5-11 year olds)	BA (Hons)	F		
Radiography (Diagnostic)	BSc (Hons)	F		
Retail Marketing Management*	BA (Hons)/DipHE	F	P	
Retail Marketing Management (Sandwich option)*	BA (Hons)	F	P	

Social Work	BA (Hons)	F		
Sport Coaching and Development	FdA	F	P	
Sport Rehabilitation	BSc (Hons)	F	P	
Sports Massage Therapy	FdSc	F	P	
Teaching and Learning Support	FdA		P	
Working with Children and Families (Top-up)*	BA (Hons)	F	P	
Working with Children and Families: Child, Young People and Family Studies	BA (Hons)/CertHE	F	P	
Working with Children and Families: Early Childhood Studies	BA (Hons)	F	P	

Lancaster	Award	Study		
Accounting and Finance (Final year award)*	BSc (Hons)	F		
Bridge to BA (Hons) QTS	FdA		P	
Business Entrepreneurship and Computing Innovations*	BSc (Hons)/DipHE	F		
Business Entrepreneurship and Computing Innovations (Sandwich option)*	BSc (Hons)	F		
Business Management and E Commerce*	BA (Hons)/DipHE	F		
Business Management and E Commerce* (Sandwich option)	BA (Hons)	F		
Business Management, Finance and Accounting	BSc (Hons)/DipHE	F		
Coaching and Sport Development*	BA (Hons)/DipHE	F	P	
Counselling	DipHE		P	
Computing and IT (Final year award)*	BSc (Hons)	F	P	
Drama*	BA (Hons)/DipHE	F	P	
Early Years Education with QTS (3-7 year olds)	BA (Hons)	F		
English	BA (Hons)/DipHE	F	P	
English and Creative Writing	BA (Hons)/DipHE	F	P	
International Business Management*	BA (Hons)/DipHE	F		
International Business Management* (Sandwich option)	BA (Hons)	F		
International Business Management (Final year award)*	BA (Hons)	F	P	D
International Marketing Management (Final year award)*	BA (Hons)	F		
Management and Leadership in Health and Social Care (Top-up)	BSc (Hons)		P	D
Nursing (Adult)	BSc (Hons)	F		
Nursing (Child)	BSc (Hons)	F		
Nursing (Learning Disability)	BSc (Hons)	F		
Nursing (Mental Health)	BSc (Hons)	F		
Occupational Therapy	BSc (Hons)	F	P	
Practical Theology*	FdA		P	
Practical Theology (Top-up)*	BA (Hons)		P	
Practice Development (Top-up)	BSc (Hons)		P	
Primary Education with Advanced Specialism in Inclusion/Special Education Needs with QTS (5-11 year olds)	BA (Hons)	F		
Primary Education with QTS	BA (Hons)/BSc (Hons)	F		
Primary Education with QTS (5-11 year olds)	BA (Hons)	F		
Professional Practice for Business*	FdA		P	D
Radiography (Diagnostic)	BSc (Hons)	F		
Religious Studies	BA (Hons)/DipHE	F	P	
Retail Marketing Management*	BA (Hons)/DipHE	F	P	

Retail Marketing Management (Sandwich option)*	BA (Hons)	F	P	
Sport and Exercise Science*	BSc (Hons)/DipHE	F	P	
Sport, Physical Activity and Health Development	BA (Hons)/Dip HE	F	P	
Teaching and Learning Support	FdA		P	
Working with Children and Families (Top-up)*	BA (Hons)	F	P	
Working with Children and Families: Child, Young People and Family Studies	BA (Hons)/CertHE	F	P	
Youth and Community Work	BA (Hons)	F	P	
Youth and Community Work (Top-up)*	BA (Hons)	F	P	

Energus, Workington	Award	Study		
Computing and IT (Final year award)*	BSc (Hons)	F	P	
International Business Management (Final year award)*	BA (Hons)	F	P	D
Radiation Protection	FdSc		P	
Radiation Protection (Top-up)*	BSc (Hons)		P	
Retail Marketing Management*	BA (Hons)/DipHE	F	P	
Retail Marketing Management (Sandwich option)*	BA (Hons)	F	P	
Sustainable Energy Engineering	BEng	F		

Furness College, Barrow-in-Furness	Award	Study		
Computing and IT (Final year award)*	BSc (Hons)	F	P	
International Business Management (Final year award)*	BA (Hons)	F	P	D
Nursing (adult)	BSc (Hons)	F		
Social Work	BSc (Hons)	F		

Tower Hamlets, London	Award	Study		
Bridge to BA (Hons) QTS	FdA		P	
Early Years Education with QTS (3-7 year olds)	BA (Hons)	F		
Primary Education with QTS	BA (Hons)/BSc (Hons)	F		
Primary Education with QTS (5-11 year olds)	BA (Hons)	F		
Teaching and Learning Support	FdA		P	

Entry requirements

We consider all aspects of your application, not simply your qualifications and grades. We look at your personal statement, reference and any relevant experience as well as your academic background and performance.



The UCAS points quoted for each course are explained in the UCAS tariff table on pages **54–55** or at **www.ucas.com**

Please note that there may be additional, specific entry requirements for your individual course. You must check the relevant course page on our website for full details: **www.cumbria.ac.uk/courses**

For professional courses such as teaching or health care you'll be required to attend for an interview. Similarly, applicants for art and performance-based courses are invited to provide a portfolio of work or to prepare for an interview/audition/workshop as appropriate. Some courses allow you to submit an ePortfolio.

BA/BSc/LLB (Hons)

General entry requirements are that you need to be able to demonstrate evidence of ability in written English (for some courses this is by achieving grade C at GCSE) and one or more of the level 3 qualification routes set out in the tariff table on pages 54–55.

The qualification entry requirements listed below are some of the most common, but this list is not exhaustive. Please contact us if you are unsure.

A levels (A2)

A minimum of two or three A levels depending on the course criteria. All A-level subjects are acceptable including General Studies.

AS levels (Advanced Subsidiary)

Offers will be framed in terms of your overall achievement at the end of Year 13. For most courses, additional AS subjects or three-unit AVCEs may be allowed to count towards your total tariff points.

BTEC

A minimum of Diploma/Extended Diploma is required depending on the course criteria.

NVQ Level 3

If you offer NVQ Level 3, your application will be considered and you may be asked to complete supplementary work.

Irish Leaving Certificate

A minimum of four Higher/Honours grade passes are required.

International Baccalaureate and European Baccalaureate

A minimum score of 24 points is necessary in the International Baccalaureate and a minimum score of 60 per cent in the European Baccalaureate. Higher entry levels may be set for some courses.

Access to HE Diploma

A pass in a relevant Access to HE Diploma course is acceptable, though level 3 grades in specific subjects may be stipulated within some courses.

Cambridge Pre-U Diploma

We will accept this in combination with another level 3 qualification.

Progression/Advanced Diploma

We will accept all lines of learning of the Progression/Advanced Diploma for entry depending on course-specific criteria.

Entry to second/third year by Accreditation of Prior Learning (APL)

We will consider applicants who have successfully completed an HNC/HND, foundation degree or equivalent relevant course with a minimum of 120 level 4 credits and 120 level 5 credits at another higher education institution. You will be asked to provide evidence of your previous study to determine suitability for admission. Applicants with extensive, relevant experience may also apply; please see our website for further details: www.cumbria.ac.uk/howtoapply

Foundation degree/Diploma in HE

You are normally expected to have at least four GCSE passes at grade C or equivalent and to have one pass at A2 or equivalent. We will accept relevant NVQ level 3 qualifications. Check the course pages on our website for further information.

Year 0

Some of our undergraduate art and design courses offer a Year 0 option, which is a four-year full-time course. This first year (year 0) develops and extends your study skills in preparation for the next three years of degree-level study. See course-specific criteria on our website for further information.

Pre-entry experience

Many of our professional courses expect you to have tested your motivation and commitment by having some experience in your intended career through paid or voluntary work, or by at least having visited a relevant department and spoken to professionals. You need to check the individual subject entry on our website and to reflect your motivation and commitment in your personal statement.

Health/CRB clearances

In addition to academic entry requirements, if you are accepted onto any course involving a placement (for example, teaching and health/social care) you will need a satisfactory occupational health clearance and/or Criminal Records Bureau background clearance prior to registration. There is normally a charge for completing the CRB disclosure procedure. You will also be subject to any other national professional requirement introduced prior to your admission.

Applicants whose first language is not English

Applying for undergraduate courses requires a minimum level of IELTS 6.0–7.0 or equivalent unless otherwise specified. For details on English language qualifications we accept, please email intadmissions@cumbria.ac.uk. Please see course details for specific score required.

Please note—you must be able to provide, prior to registration, evidence of all the qualifications you list on your application form. All certificates must be supplied no later than 31 August prior to starting your course in September.



Making your application

Full-time courses

Apply online through the Universities and Colleges Admissions Service (UCAS), between 1 September 2013 and 15 January 2014; they will send your application on to us. Applications submitted after this date will be considered late and the course you have applied for might be full by this time; however, we will consider you for alternative suitable courses.

Their website (www.ucas.com) provides all the information you need about universities, courses, locations, entry requirements and financial support. You are allowed to select up to five course choices; the UCAS application fee is £12.00 for a single choice and £23.00 for two to five choices. (Fees correct at time of print.)

You need to use the correct UCAS campus and course code as not all courses are offered at every campus. You will be asked for the following information when you apply online:

- institution code name: UoC
- institution code: C99
- campus location:
 - A Ambleside
 - B Brampton Road, Carlisle
 - E University of Cumbria at Energus, Workington
 - F Fusehill Street, Carlisle
 - L Lancaster
 - T University of Cumbria at Tower Hamlets
 - Y University of Cumbria at Furness College, Barrow-in-Furness

Part-time courses

Applications should be made online directly to the university—visit our website or contact the enquiries team for details and guidance. There is no official closing date but we would encourage you to apply as early as possible, as many courses are competitive.

What makes a good application?

We consider all aspects of your application, not simply your qualifications and grades. We look at your academic background and performance, relevant experience (particularly for professional courses where some voluntary or paid experience is required) and your reference. Above all, we look for motivation, commitment and potential—evidence that you can benefit from study at higher education level.

Make sure you include

- Relevant qualifications/evidence of ability: check our website for the specific entry requirements required for each course. Tell us your previous academic results and your projected grades.
- A supportive reference, from an employer or your school or college.
- A good personal statement. Explain clearly what attracts you to the course and tell us about your wider interests and experience. If you are applying for a course that incorporates professional training

and placements you should include any relevant experience or visits you have made in the workplace. Highlight your individual strengths and qualities, personal skills, capacity for teamwork, contribution to the community and your enterprise, originality and determination. Select some activities which bring out these qualities.

What next?

When we receive your application, we will send you an acknowledgement and if you are successful at this stage you will get either—an offer (with an invitation to visit the campus to which you have applied), or—an invitation to interview on a particular date. If we are not able to offer you a place on your chosen course we will usually try to offer you a place on a similar course and will contact you to discuss this. Alternatively, if we think you are suitable, but cannot offer you a place on your preferred campus because of the level of competition, we will offer you a place at another campus if one is available.

And if I accept?

The admissions team will contact you and send further information from February onwards about accommodation, and from May/June onwards about preparing to join the university. If you have any other queries you can always telephone the admissions offices for information and advice on **0845 606 1144**.

Deferred entry

We welcome applications for deferred entry on some courses. If you have specific plans during your year out, indicate these on your personal statement as they may be relevant to your course and could enhance your application.



Making your application continued ...

International students

Applications for full-time undergraduate study are made through UCAS. Please see the International pages of our website for full details of our entry requirements (including English-language skills) as well as contacts for advice and support.

From March 2009 the UK Border Agency has introduced a Points Based Immigration System (PBS) for students coming to the UK from outside the European Economic Area (EEA). Students entering higher education will need to obtain a Confirmation of Acceptance (CAS) plus finance confirmation to obtain a Tier 4 student visa.

UK education providers are licensed by the UK Border Agency. When students apply for their visa (or entry clearance) they will need a valid Certificate of Acceptance of Studies from the university. Please note the CAS is not a guarantee that the visa will be issued. See the following websites for further details:

[www.ukba.homeoffice.gov.uk/
studyingintheuk](http://www.ukba.homeoffice.gov.uk/studyingintheuk)

www.ukcisa.org.uk

Equality and diversity

We are committed to creating a positive environment where everyone is treated with dignity and respect, and is supported in the development of their careers and studies.

We aim to create a culture that supports equality, diversity and inclusion. We are all part of the university and contribute towards the culture through our actions and words. We aim to address any barriers to inequality in our systems, policies and decision making, as well as in our behaviour and ways of working. Equality, diversity and inclusion encompass the key institutional aim of widening participation.

We aim to treat all staff and students equally irrespective of gender, gender identity or re-assignment, age, race, colour, nationality, ethnic origin, marital status/civil partnership, sexual orientation, disability, pregnancy and maternity, family responsibility, union or association membership, political outlook or religion or belief (or a lack of belief). If you have additional support needs please make us aware of these at the earliest possible opportunity. If you have a disability or specific learning disability and require additional support please contact enquirycentre@cumbria.ac.uk

Note—there may be additional, specific entry requirements for some courses. You must check the relevant course page on our website for full details www.cumbria.ac.uk/courses

On rare occasions a UCAS course code may change after this publication has gone to print. Before completing your application form, visit the UCAS website to verify your course code.

Course key

Honours degrees

Honours degrees involve three, or in some cases four, years of study, or longer if studied part-time. Check the individual course pages for entry requirements.

BA (Hons)—Bachelor of Arts

BSc (Hons)—Bachelor of Science

Cert HE

The award you receive if you successfully complete the first year of a degree and leave at that point. Some courses are offered as CertHE.

DipHE

The award you receive if you successfully complete the first two years of a degree and leave at that point. Some courses are offered as DipHE.

Foundation degrees

Foundation degrees are degree-level qualifications, designed with the input of employers, and combine academic study with workplace learning. They can be completed in two years of full-time study

Part-time options are also available.

FdA—Foundation Art

FdSc—Foundation Science

Top-up

If you have already completed a foundation degree or HND, these courses give you the opportunity to gain a full honours degree with just a further year of full-time study. You can also study part-time if you prefer.

QTS

Qualified Teacher Status means you are qualified to teach in a school in England and Wales.

Placement and Sandwich

These degree courses offer a placement or sandwich year with an employer that allows you to use your knowledge in a real career environment.

Points

The recommended UCAS tariff point score you need to achieve to be considered for a place on your course.

UCAS tariff points

GCE & VCE Qualifications					
GCE/AVCE Double Award	A level with additional AS (9 units)	GCE A level & AVCE	GCE AS Double Award	GCE AS & AS VCE	Tariff Points
A*A*					280
A*A					260
AA					240
AB					220
BB	A*A				200
BC	AA				180
	AB				170
CC					160
	BB				150
CD	BC	A*			140
DD	CC	A	AA		120
	CD		AB		110
DE		B	BB		100
	DD		BC		90
EE	DE	C	CC		80
			CD		70
	EE	D	DD	A	60
			DE	B	50
		E	EE	C	40
				D	30
				E	20

OCR Nationals			
National Extended Diploma	National Diploma	National Certificate	Tariff Points
D1			360
D2/M1			320
M2			280
M3	D		240
P1	M1		200
P2	M2/P1		160
P3	P2	D	120
	P3	M	80
		P	40

BTEC Qualifications (QCF) (suite of qualifications known as nationals)				
Extended Diploma	Diploma	Subsidiary Diploma	Certificate	Tariff Points
D*D*D*				420
D*D*D				400
D*DD				380
DDD				360
DDM				320
DMM	D*D*			280
	D*D			260
MMM	DD			240
MMP	DM			200
MPP	MM			160
		D*		140
PPP	MP	D		120
	PP	M		80
			D*	70
			D	60
		P	M	40
			P	20

Progression Diploma	Tariff Points
A*	350
A	300
B	250
C	200
D	150
E	100

Advanced Diploma = Progression Diploma plus Additional and Specialist Learning (ASL). Please see the appropriate qualification to calculate the ASL score.

Welsh Baccalaureate Advanced Diploma (Core)	Irish Leaving Cert	Scottish Qualifications		Tariff Points
	Higher	Advanced Higher	Higher	
		A		130
Pass				120
		B		110
	A1	C		90
			A	80
	A2			77
		D		72
	B1			71
			B	65
	B2			64
	B3			58
	C1			52
			C	50
	C2			45
	C3			39
			D	36
	D1			33
	D2			26
	D3			20



Our courses

The course details in this prospectus were correct when published in January 2013. For the up-to-date picture visit our website www.cumbria.ac.uk/courses

Courses marked * are subject to validation.

The University of Cumbria reviews its course portfolio to make sure what we offer is in line with student and employee needs. It means that we regularly introduce new courses.

Validation is the process by which we establish the academic standard and quality of our courses. New developments are normally validated from four to twelve months ahead of their start date.

As this prospectus is produced well in advance of course starting dates, we use the term 'subject to validation' for courses we intend to run, but which have not completed the validation process.

58		BUSINESS AND COMPUTING
68		CREATIVE ARTS
84		EDUCATION
92		FORESTRY AND OUTDOOR
100		HEALTH AND SOCIAL CARE
114		HUMANITIES
122		LAW AND SOCIAL SCIENCE
128		PERFORMANCE
138		POLICING
144		SCIENCE AND ENGINEERING
150		SPORT

Business and Computing

The University of Cumbria Business School is constantly evolving its portfolio to make sure our degrees are up to date and relevant to graduates who want to forge their careers in the world of business, whether in this country, Europe or further afield.

Our academically rigorous courses are cutting-edge and focus on growth areas in the business world. From eCommerce, entrepreneurship and computer innovation to international marketing, as well as business administration if you need a well-rounded, excellent generalist business degree you are in the right place. Many offer sandwich options that provide great experience in real businesses and give a real boost to your CV in the process—plus we offer a range of top-up courses that allow you to convert a qualification into a full honours degree.



Darren

“I most enjoyed learning about branding and consumer buying perceptions. I now run a business project in Whitehaven and develop my own business, Showman Clothing.”

Darren Walker
BA (Hons) Business
Management with Marketing

University of
Cumbria 

Business School

Jordan

Jordan Milo, BA (Hons) Business Management (Top-up)
International Student from USA

“The courses are more directed to individual learning instead of hours of lectures as found with most American-style courses. I have found that the atmosphere within the University of Cumbria has been nothing less than extremely welcoming, the tutors included.”



Entry requirements:

FdSc/FdA/HND or equivalent
240 credits

Location:

Lancaster

Duration:

one year full-time

UCAS code:

N3N4

Points:

BSc(Hons)—240

DipHE—120

Location:

Lancaster

Duration:

BSc (Hons)—three years full-time

Sandwich option—four years full-time

DipHE—two years full-time

UCAS code:

BSc (Hons) - I190

DipHE - N900

Sandwich option - N901

BSc (Hons)**Accounting and Finance
(Final year award)***

This course provides a critical awareness of the role and techniques required for a career in finance in the public, private or third sector. With a strong vocational orientation this is the course for you if planning a career in finance.

BSc (Hons)/Dip HE**Business Entrepreneurship
and Computing Innovations*
(Sandwich option available)**

With a high demand from employers for graduates who possess both technical and entrepreneurial skills this course will help launch your career in the business world. This qualification will develop the skills and knowledge needed to set up a business or social enterprise of your own.





Points:

BA(Hons)—240

DipHE—120

Location:

Lancaster

Duration:

BA (Hons)—three years full-time

Sandwich option—four years full-time

DipHE—two years full-time

UCAS code:

BA (Hons) - N216

DipHE - N262

Sandwich option - N261

Points:

BSc(Hons)—240

DipHE—120

Location:

Lancaster

Duration:

BSc (Hons)—three years full-time

Sandwich option—four years full-time

DipHE—two years full-time

UCAS code:

BSc (Hons) - N234

DipHE - N235

Sandwich option - N236

Entry requirements:

FdSc/FdA/HND or equivalent

240 credits

Location:

Carlisle, Fusehill Street

Energus, Workington

Furness College, Barrow-in-Furness

Lancaster

Duration:

one year full-time

two years part-time

UCAS code:

I100

BA (Hons)/Dip HE Business Management and E Commerce* (Sandwich option available)

This course will provide a deep knowledge of the process surrounding technical and operational developments in e-commerce. Areas of study include e-commerce environment, trends and developments in e-commerce initiatives, marketing, supply chain management and strategy and planning. The one-year sandwich option between years 2 and 3 allows you to enhance and apply your knowledge in real-world contexts.

BSc (Hons)/Dip HE Business Management, Finance and Accounting

This course prepares you for the challenges of working in the business world and allows you to start any career with confidence. You will develop a robust understanding of applied financial theories and concepts. This is a vocational course which seeks to enhance business practice using financial applications. There are options to study abroad. The one-year sandwich option between years 2 and 3 allows you to enhance and apply your knowledge in real-world contexts.

BSc (Hons) Computing and IT (Final year award)*

This programme builds upon your existing IT and computing practical skills and theoretical understanding. You will explore real-world solutions to contemporary business issues.



Points:

BA(Hons)—240

DipHE—120

Location:

Lancaster

Duration:

BA (Hons)—three years full-time

Sandwich option—four years full-time

DipHE—two years full-time

UCAS code:

BSc (Hons) - N120

DipHE - N212

Sandwich option - N213

Entry requirements:

FdSc/FdA/HND or equivalent

240 credits

Location:

Lancaster

Enercus, Workington

Furness College, Barrow-in-Furness

Distance learning

Duration:

one year full-time

two years part-time

UCAS code:

N121

BA (Hons)/DipHE International Business Management* (Sandwich option available)

This course will provide you with extensive knowledge of the international business environment. You will graduate well prepared for a career in the global business world. Careers can include working in public, private and third sector organisations. You will study aspects of business and management such as human resources, marketing, finance and operations. There are options to study abroad and you will also have the option to take a sandwich year between years 2 and 3.

BA (Hons) International Business Management (Final year award)*

This programme will build on your previous knowledge of business and management using real-world projects that address contemporary global issues and engage with strategic challenges.

Entry requirements:

FdSc/FdA/HND or equivalent
240 credits

Location:

Lancaster

Duration:

one year full-time

UCAS code:

N1N5

Points:

80

Location:

Distance learning

Duration:

four years part-time

UCAS code:

N/A

Points:

240

Location:

Lancaster

Carlisle, Fusehill Street

Energus, Workington

Duration:

BA (Hons)—three years full-time

six years part-time

Sandwich option—four years full-time

DipHE—two years full-time

UCAS code:

BA (Hons) - N2N5

DipHE - N126

Sandwich option - N246

BA (Hons)**International Marketing Management (Final year award)***

This programme will equip you with the skills you need to pursue a career in marketing, working for a large international company, or starting your own business. This qualification can lead to careers in advertising, business consultancy, market research or marketing management.

FdA**Professional Practice for Business***

This course has routes that allow you to tailor learning in preparation for an early-career management role. It has been designed for those currently in work looking for career progression. Typical routes would include project management, marketing, operations management and environmental management.

BA (Hons)/DipHE**Retail Marketing Management* (Sandwich option available)**

With the retail world actively seeking marketers to develop consumer loyalty and attract new custom this course will equip you with the skills needed to become a key player in this evolving sector. It covers fundamental marketing concepts as well as retail management knowledge, such as logistics, consumer behaviour, operations and retail communications. This course will enhance both your marketing and retailing career opportunities. There are options to study abroad. The optional sandwich year between years 2 and 3 will allow you to enhance and apply your knowledge in real-world contexts.



Creative Arts

We have the perfect solution if you want to pursue your passion for the arts in the widest sense. It's the artistic community at our Brampton Road campus in Carlisle.

There is a real artistic buzz about the place that is immensely supportive and encouraging for all artists in whatever discipline—from creative arts, to performance, to digital, film and illustration. You notice the atmosphere straight away when you visit. As a student, you will grow as an artist with the full support and encouragement of enthusiastic lecturers and follow in the footsteps of generations of students who have succeeded in their chosen practice.



Laura

"I love everything about the University of Cumbria! Every assignment set is inspiring and exciting. Sometimes I can't jot down the ideas spilling out of my brain fast enough! The campus is beautiful and small. I feel a sense of belonging there."

Laura Woodhouse
FdA Art of Games Design

95% OF FDA THE
ART OF GAMES
DESIGN STUDENTS ARE
IN WORK OR FURTHER
STUDY 6 MONTHS
AFTER FINISHING



Rick

Rick Banks
BA (Hons) Graphic Design graduate

"I loved that I was designing with very talented students—it kept you on your toes. That sense of competition is important at university and in design. A lot of graduates have gone on to big things too, which I find encouraging."

Points:
220

Location:
Carlisle, Brampton Road

Duration:
three years full-time
four to six years part-time

UCAS code:
NP83

Points:
100

Location:
Carlisle, Brampton Road

Duration:
two years full-time
four years part-time

UCAS code:
W280

Entry requirements:
FdSc/FdA/HND or equivalent

Location:
Carlisle, Brampton Road

Duration:
one year full-time
two years part-time

UCAS code:
W281

Points:
240

Location:
Carlisle, Brampton Road

Duration:
three years full-time
four to six years part-time

UCAS code:
P311

BA (Hons) Adventure and Media

If your ambition is to work within the outdoor industry and utilise media as a platform, this course is for you. It offers a unique combination of outdoor practitioner knowledge with professional media-production skills, providing many career paths such as media production and outdoor instruction.

FdA Art of Games Design, The

If disciplines ranging from 3D modelling, texturing and lighting to concept art, drawing and a core specialisation of your choice sound just up your street, then this is the course for you. We're keen to share our expertise with you so if you aspire to be an art director, concept artist, modeller or animator, apply now.

BA (Hons) Digital Arts (Top-up)

With graduates who have gone on to work for Pixar, The Mill and many other leading companies, this top-up course enables you to focus on an area of study and produce a project, supported by a core adviser who meets with you regularly. The course enables you to have extra time to develop your artistic, creative and technical skills in the subject or topic of your choice.

BA (Hons) Film and Television Production

Join the roll call of our graduates who have won 27 Royal Television Society Awards and have gone on to work for, among others: BBC Productions, MTV (Berlin), ITV Productions, Company Pictures, Planet 24, Nickelodeon, Ridley Scott Associates and Independent Productions. This vibrant course is designed to give you all the relevant skills you need to start your career in film and television production.





Points:

100

Location:

Carlisle, Brampton Road

Duration:

one year full-time

UCAS code:

P314

BA (Hons) Year 0**Film and Television Production**

We keep the numbers small on this course so that you receive lots of individual attention. The foundation year gives you the space to develop and grow in both confidence and experience ready for year one of the BA (Hons) Film and Television Production degree. After graduation, you can focus on a wide range of careers within the film and television industry or even carve out a niche as an independent producer.

Points:

240

Location:

Carlisle, Brampton Road

Duration:three years full-time
four to six years part-time**UCAS code:**

W100

**BA (Hons)
Fine Art**

We will transform you from student to professional practitioner, such as artist, curator, educator or art worker with our practice-led, student-centred approach to fine art education. In studying a range of art disciplines you develop entrepreneurial skills, informed by knowledge and experience. Recent graduates have found employment in galleries and museums as curators, in art education, social arts, art therapy, and most of all as contemporary practitioners.

Points:

100

Location:

Carlisle, Brampton Road

Duration:

one year full-time

UCAS code:

W108

BA (Hons) Year 0**Fine Art**

When you study fine art with us, you will be equipped and empowered to articulate imaginative responses in the media of your choice. On successful completion of the year, you have the choice to automatically progress to the first year of the BA (Hons) Fine Art degree.

.....
The BA (Hons) Graphic Design
and Illustration studio
.....



Points:
240

Location:

Carlisle, Brampton Road

Duration:

three years full-time
four to six years part-time

UCAS code:
W210

BA (Hons) Graphic Design

Just like you, we love graphic design. You will use that passion to produce exciting designs that showcase your skills, commitment and creativity to a wide range of employers. Our purpose is to help you graduate as a flexible, fully prepared, highly motivated, professional designer. In fact, just the type of person the creative industries are crying out for. Our graduates go on to work for world-class creative agencies, TV companies, publishing houses and newspapers.

Points:
100

Location:

Carlisle, Brampton Road

Duration:

one year full-time

UCAS code:
W215

BA (Hons) Year 0 Graphic Design

Our course is carefully structured, starting at first principles. It allows you to develop rapidly using innovative project briefs, technical workshops, frequent studio lectures and practical demonstrations. It will allow you to stand out from the crowd when you graduate or progress onto our full honours degree.

Points:
240

Location:

Carlisle, Brampton Road

Duration:

three years full-time
four to six years part-time

UCAS code:
W220

BA (Hons) Illustration

We've designed a unique course that not only provides you with a complete education as an illustrator but also ensures you have the necessary graphic design skills to allow you to be flexible in your career choices. It's an exciting, challenging and rewarding course.

Points:
100

Location:

Carlisle, Brampton Road

Duration:

one year full-time

UCAS code:
W222

BA (Hons) Year 0 Illustration

This is a one-year intensive programme that will guarantee progression on to the three-year BA (Hons) Illustration degree. It is a practical, studio-based experience, developing your visual language through experimentation, mark-making and digital manipulation.

Points:
240

Location:
Carlisle, Brampton Road

Duration:
three years full-time
four to six years part-time

UCAS code:
W641

Points:
100

Location:
Carlisle, Brampton Road

Duration:
one year full-time

UCAS code:
W640

Points:
240

Location:
Carlisle, Brampton Road

Duration:
three years full-time
four to six years part-time

UCAS code:
CW36

BA (Hons) Photography

An established course that places great emphasis on strong and individual practice of its students. We like you to be independent, to freely experiment, to have passion for your work and be interested in communicating with the world. Graduates go on to work internationally as freelance photographers, picture editors, picture researchers, stylists, curators and other satisfying roles.

BA (Hons) Year 0 Photography

The course aims to give you the practical and critical experience you need for degree-level education. It's an ideal route onto the BA (Hons) Photography programme. The emphasis is initially on experimentation and exploration using a variety of techniques and processes.

BA (Hons) Wildlife and Media

Offering a depth of both professional and field experience, you will be supported in the development of your own media-based projects and documentary work, which is excellent preparation for your career. This degree provides a unique opportunity to combine an understanding of both wildlife and media skills and knowledge through the medium.

Laura Woodhouse

FdA Art of Games Design

The Art of Games Design student Laura Woodhouse has followed in her mum's academic footsteps. Laura's mother obtained her degree whilst bringing up her family on her own and Laura is doing the same.

After a number of years working in a call centre and a period of ill health, Laura re-evaluated her career plans. She had always been fascinated by storytelling and drawing and found the Art of Games Design would allow her to use her creativity to develop skills that she could use in the growing digital animation market.

"As a child I would sit and draw characters out of the Narnia books and make up fantastic stories in my head. I never imagined that there would be a course where such things were a strength—where I could harness this creative inner world and run with it. Be surrounded by like-minded people and drive this unusual skill towards something positive and wonderful."



Laura's university experience has exceeded expectations. "I love everything about it! Every assignment set is inspiring and exciting. Sometimes I can't jot down the ideas spilling out of my brain fast enough! The campus is beautiful and small. I feel a sense of belonging there. And everyone is so friendly and helpful from my lecturers to catering staff, to library people and reception too. I talk to them all and they talk to me, and it gives me a sense of being part of this big Brampton Road family."

Laura has had lots of unforgettable moments. Top among them was being featured in the magazine, *3D Artist*— "Opening a magazine and seeing my artwork on the page amongst people I have followed and admired for years was more than I can describe. I was over the moon and ran out of the house with the magazine to show the poor postman! I still haven't come down from that high."

Creative Arts showcase

Our students are highly creative and here is a selection of their work, so you can appreciate their talents for yourself.

If you would like to view more visit our summer exhibition. For more information, please visit www.cumbria.ac.uk/exhibition



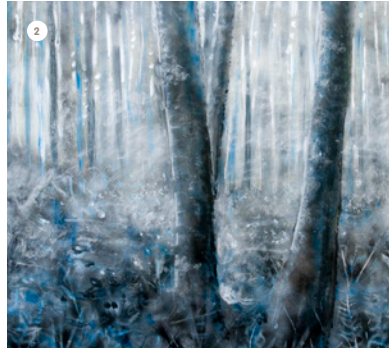
Max

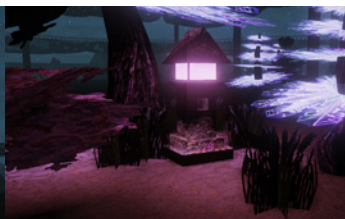
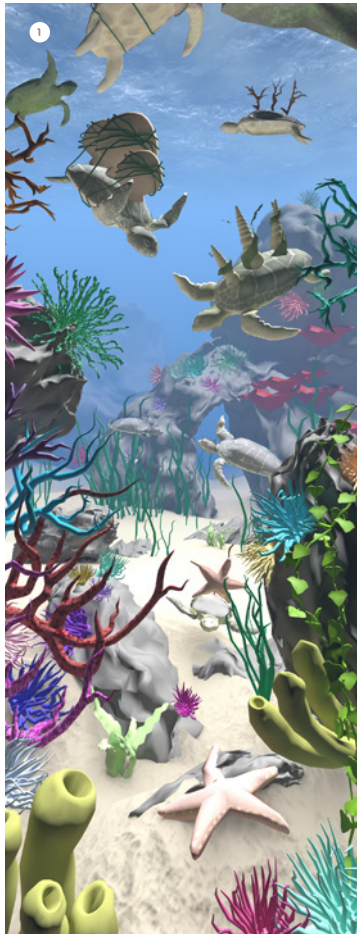
"I appreciated being judged by my portfolio during my application; I felt respected as an artist rather than a mere number on a page, as was the case with other universities."

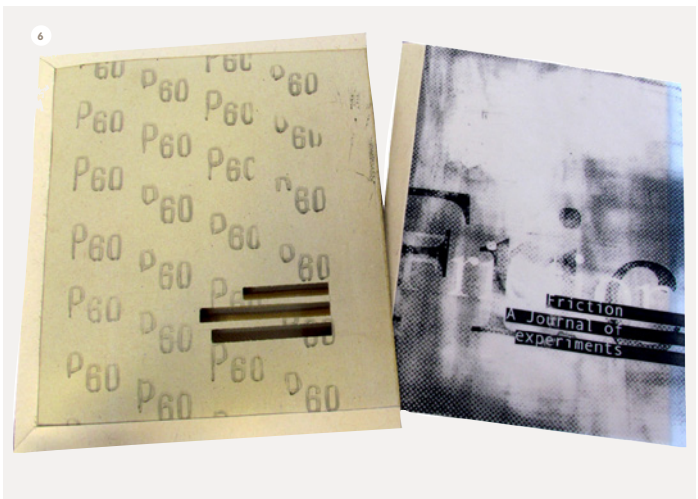
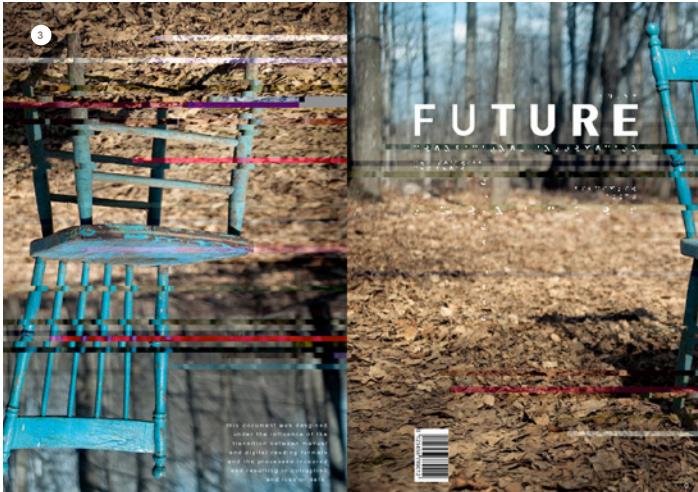
Max Evans-Kirkman
BA (Hons) Film & TV
Production

Fine Art

1. Amanda Jefferies
 2. John Lister
 3. Chris Sullivan
 4. Katie Anderson
 5. Max Fox
 6. Erin Tullouch
-







.....

Games Design

- 1. Emily Bradle
- 2. David Lindopp
- 3. Robyn Hardy
- 4. Miranda Bennett-Margrove
- 5. Klaes Simonsen

Graphic Design

- 1. Ben Barrow
 - 2. Hannah Morgan
 - 3. Sam Fisher
 - 4. Katie Roberts
 - 5. Helen Quint
 - 6. Matt Book
-

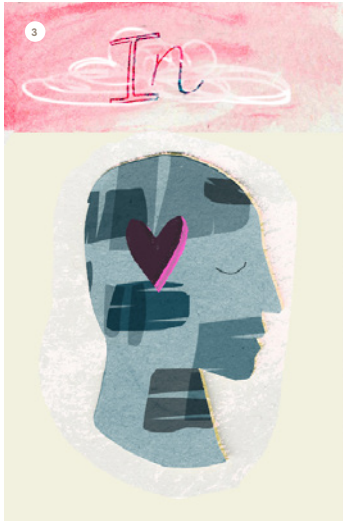
1



2



3



Out



4



5





Illustration

1. Tom Softley 2. Elly Carthy
3. Jenny Cox 4. Yvette Earl
5. Jade Wall

Photography

1. Ruairidh Cameron 2. Billie Lynch
3. Sally Wilde 4. Sammey Tilley
5. Tania Gibson.
-

Education

We will make sure that your driving ambition to inspire young minds as a teacher or as a professional working with young children will be realised.

Our legacy institutions can trace their record of training successful teachers back to the 19th century which means we have unrivalled experience of making sure you become an effective teacher or professional. It's why we are one of the biggest trainers of teachers in the UK and constantly innovate our course content to make sure you are in the best possible position when applying for your first role. Our recent Ofsted report highlighted the passion our trainees have for their chosen profession. The report additionally praised the ability of our students to plan motivating lessons. We also have a relationship with hundreds of schools in the UK and overseas, meaning you will have the widest choice of placement opportunities during your course of study.



Joseph

"The tutors were fantastic from start to finish and our cohort developed very close bonds with them. My favourite experience at university was being part of the university's rugby team, both playing rugby and enjoying the social side of it."

Joseph Denham
BA (Hons) Early Years
Education with QTS

WE ARE ONE
 OF THE LARGEST
 TRAINERS OF
 TEACHERS IN THE UK



Points:

N/A

Location:Lancaster
Tower Hamlets**Duration:**

one year part-time

UCAS code:

N/A

Points:

280

Location:Carlisle, Fusehill Street
Lancaster

Tower Hamlets

Duration:

three years full-time

UCAS code:

X310

Points:

280

Location:

Lancaster

Duration:

four years full-time

UCAS code:

X360

FdA**Bridge to BA QTS**

The Bridge is designed to enable graduates of FdA Teaching and Learning Support to progress to the final year of the three-year BA (Hons) Primary Education with QTS.

BA (Hons)**Early Years Education with QTS (3-7 year olds)**

As one of the largest trainers of school teachers in the country and a reputation for being one of the best, this course is suitable for those wishing to teach children aged 3–7. There is a strong emphasis on child development as well as covering all curriculum areas suitable for this age group. Placements are an important part of this course, helping to further improve your employability.

BA (Hons)**Primary Education with Advanced Specialism in Inclusion/Special Education Needs with QTS (5-11 year olds)**

This course gives you a deep insight into how children learn and the implications for classroom practice. In the final year students have the opportunity for additional Master's level study. Options include: assessment and legislation, communication, sensory and physical needs, behavioural, emotional and social development. This course makes you a great candidate for any primary teaching post. Alternatively, graduates have found work in special schools, further and higher education and other related professions.

Fatima

Fatima Hassan—BA Primary
Education (QTS)

"I have found my course to be well structured and each year builds on the previous year. I completed my foundation degree and then 'bridged' onto the final year of the BA course. Attending university has allowed me to gain a professional qualification and I have made lifelong friends whilst doing so."





Rob

Rob Livesley—BA (Hons) Primary Education with QTS (four-year)

“It’s got everything, really. It’s got the academic sense and the social life.”



BRING THIS PAGE TO LIFE

WITH THE FREE AURASMA APP

For instructions on how to view interactive content see page 5. You can view this and other videos at www.cumbria.ac.uk/realstudents

Points:

280

Location:

Carlisle, Fusehill Street
Lancaster
Tower Hamlets

Duration:

three years full-time

UCAS code:

See website

BA/BSc (Hons)**Primary Education with QTS***

As a teacher, you want to make positive contributions to the lives of young children. We will prepare you to work as a teacher with children across the various age phases, in a variety of schools and settings. This will allow you to develop into an excellent teacher and equip you with the confidence required to take up your first teaching post.

Points:

280

Location:

Carlisle, Fusehill Street
Lancaster
Tower Hamlets

Duration:

three years full-time

UCAS code:

X120

BA (Hons)**Primary Education with QTS
(5-11 year olds)**

By choosing to study primary education in our friendly and supportive environment, you will give yourself a great opportunity to develop the skills, experience and understanding you need to become an effective teacher. Practical experience in a range of primary classrooms is a significant element of this programme. You will also study a specialist theme.

Points:

N/A

Location:

Carlisle, Fusehill Street
Lancaster
Tower Hamlets

Duration:

three years part-time

UCAS code:

N/A

FdA**Teaching and Learning Support**

This is a work-based qualification if you work in primary, secondary and special schools, and other educational settings such as FE colleges. We have successfully run the foundation degree for the last ten years and many students have progressed to full BA (Hons) either with or without QTS (Primary).



Nargis Khatun

BA (Hons) in Primary Teaching with QTS

Nargis is from London and had been working as a teaching assistant for the last seven consecutive years. She had seen some great teachers teaching and this had inspired her to become a qualified teacher.

Nargis chose to study at the University of Cumbria because it was “one of the universities offering the opportunity to go into teaching closest to home. It was also recommended by friends and colleagues who studied at the same university”.



Since starting university Nargis says “I have become organised, I have learnt to prioritise my workload, meet deadlines and work under pressure. Academically it has made me a better researcher and looking into things deeper, under the surface. Work experience has also been brilliant.”

“I am proud of completing this course, and look forward to teach in a primary school.”

Forestry and Outdoor

Imagine studying at a campus surrounded by high fells, big skies, water aplenty and clean, fresh air. Our Ambleside campus in the heart of the beautiful Lake District National Park has all these attributes and is ready for you if your passion is the great outdoors and forests of all kinds.

Location is not the whole picture as we have lots more to offer. We are the biggest provider of outdoor education in Europe and the Lakes offer the best opportunities for linking theory and practice. Ambleside is also home to the National School of Forestry and there is no better place to develop your career whether your focus is managing and increasing biodiversity or contributing to a low-carbon future.



Glen

"I chose to study with the University of Cumbria, because of its premier location with regards to access to the outdoors. The staff on my course are amazing and due to the high staff-to-student ratio, we get lots of contact time. They are always willing to put the extra effort in if you are."

Glen Roberts
BSc (Hons) Outdoor Studies

THE UNIVERSITY OF
 CUMBRIA IS THE
 LARGEST PROVIDER
 OF OUTDOOR
 RELATED DEGREES
 IN THE UK



Nick

Nick Lee
BA (Hons) in Outdoor Studies

"University has steered me in a great direction. I'm not a great one for mapping my life out but I now have the opportunity to take steps down multiple paths—it seems I have at least 100 options. Every time I start a new module or read a new article or book, I say to myself, 'I could do that!'"

Points:

80

Location:

Ambleside

Duration:two years full-time
four years part-time**UCAS code:**

D503

Entry requirements:FdSc/FdA/HND or equivalent
240 credits**Location:**

Ambleside

Duration:one year full-time
two years part-time (by
distance learning)**UCAS code:**

D501

Points:

240

Location:

Ambleside

Duration:three years full-time
four to six years part-time**UCAS code:**D440
with placement - D502

FdSc Forestry

This vocational course helps you develop specialist knowledge, understanding and skills in forestry. It is suited to those new to forestry or mid-career foresters wanting to up-skill. The emphasis is on the development of forestry knowledge and the practical application of this. For students not already in the industry, the one-year work placement is a chance to experience hands-on forestry work. You can also do vocational certificate courses recognised by the industry with us.

BSc (Hons) Forestry (Top-up)

If you have a HND or foundation degree in forestry (or an equivalent qualification) this course enables you to obtain a BSc (Hons) degree in Forestry through one year's study full-time or two years' study through distance learning. Gaining a BSc opens doors to career opportunities in the sector. Graduates have found work with the Forestry Commission and private estates.

BSc (Hons) Forestry and Woodland Conservation (with or without placement)

This course is designed to give you a broad understanding of the many issues surrounding the conservation of forests and woodlands. You are also able to gain skills relevant to broader conservation and natural resource management. This programme is geared towards equipping you with the understanding and skills required to carve out a career in the diverse and dynamic natural resources sector. If you decide to take the placement option, you can work for a forest conservation organisation to gain practical experience and increase your employability.





Points:

240

Location:

Ambleside

Duration:

three years full-time

four years part-time

UCAS code:

D500

with placement - D504

BSc (Hons)**Forest and Woodland Management (with or without placement)**

Woodlands are now managed for a variety of reasons, including timber, carbon and biomass and non-wood forest products, recreation, landscape development, biodiversity and conservation. Where better to study this than the National School of Forestry and this is our flagship course. It explores the science and practice of managing forests and management. You gain skills in broader conservation management and our degree has a strong professional focus. The optional placement year allows you to explore all these opportunities for yourself.

Points:

100

Location:

Ambleside

Duration:

two years full-time

four years part-time

UCAS code:

X900

FdA**Outdoor Education**

The vocational aspect of this course makes it the ideal choice if you wish your career to be in outdoor education. You will work on placements in both years, offering you an ideal opportunity to work and impress potential employers. You have the Lake District mountains on your doorstep so you are never far from the places that inspire you. Successful graduates from the foundation degree can study on a top-up course, such as our BA in Outdoor Education.

Entry requirements:

FdSc/FdA/HND or equivalent

240 credits

Location:

Ambleside

Duration:

one year full-time

two years part-time

UCAS code:

X391

BA (Hons)**Outdoor Education (Top-up)**

This course provides a high-quality progression route for HND and foundation degree students who aspire to work within the outdoor education sector and wish to study at degree level. Outdoor education has evolved to become a far-reaching and dynamic industry, both within the UK and globally. You may use the degree for entry into careers in outdoor education centres, for instructional work, to follow a career in the public or uniformed services or for employment in an increasing array of community and learning-based projects.

Points:

260

Location:

Ambleside

Duration:three years full-time
four to six years part-time**UCAS code:**

NX23

BSc (Hons)/BA (Hons)
Outdoor Leadership

Our outdoor leadership course will give you first-class practical skills development and cutting-edge academic knowledge to prepare you for the dynamic working environments our students enter on graduation. The skills and knowledge you'll gain on the course are transferable into all aspects of life and employment.

Points:

260

Location:

Ambleside

Duration:three years full-time
four to six years part-time**UCAS code:**

X300

BSc (Hons)
Outdoor Studies (Environment)
BA (Hons)
Outdoor Studies

The BA pathway encourages you to question and to challenge outdoor learning. A series of experiences are designed to examine current practice and encourage you to critically think about future practice. This degree pathway focuses on how people perceive and use the outdoors.

The BSc pathway allows you to deepen your own environmental learning. A variety of habitats and landscapes are studied in the field which aims to develop your field skills, provide hands-on experience, develop critical understanding of management issues and seek positive solutions.

THE UNIVERSITY OF
CUMBRIA IS HOME TO THE
NATIONAL SCHOOL OF
FORESTRY AND CENTRE FOR
WILDLIFE CONSERVATION

Nick Lee

BA (Hons) Outdoor Studies

Studying Outdoor Studies at our Ambleside campus has presented Nick Lee with a myriad of personal and career opportunities.

Nick chose the course because of the unrivalled study location in the heart of the Lake District National Park, our reputation for linking theory and practice in the outdoors and, just as importantly, friends were applying too. He was also attracted to the ethos of the course that doesn't just focus on elite performers but welcomes students with a broad range of abilities.

Nick said "University has steered me in a great direction. I'm not a great one for mapping my life out but I now have the opportunity to take steps down multiple paths—it seems I have at least 100 options. Every time I start a new module or read a new article or book, I say to myself, 'I could do that'. So yes I have achieved the goals I had when I first started uni but I have done so much more as well."



The paths have led to a wide range of experiences. "Whilst at uni, I had the opportunity to go sailing round the Hebrides. On this voyage we met a sail training vessel run by Ocean Youth Trust Scotland. I liked their work and as a result, I started to do volunteer work for them and worked my way up to second mate, acquiring a yacht master certificate along the way. On one voyage, a special needs group came on board for a sailing week. As a result of working with this group, I was offered a job in Birmingham with a company working with a range of clients including people with special needs. Whilst at this job the company started to branch out into forest schools so I did my forest schools leaders award as well. I'm passionate about British native forests so this was a dream role. If you say yes to opportunities, they often lead you down satisfying routes," said Nick.

Health and Social Care

At the heart of your career aspiration is a desire to help, support and empower people by working as a professional in the health and social care field.

Our wide range of degrees will get you qualified in your chosen field and they encompass nursing, working with children and families, allied health professions, youth and community work and social work. Placements are an important part of all the courses and they enable you to apply theory to practice so that when you graduate, you are ready for your first, professional career step.

RADIOGRAPHY STUDENTS
ENJOY STATE-OF-THE-ART
DIRECT AND COMPUTED
RADIOGRAPHY EQUIPMENT

Anna

“My placements have been great, very informative and so useful in my studies to gain a greater understanding in the field. I have also accessed volunteering opportunities with the Stroke Association and through the Alzheimers Society which have been very beneficial.”

Anna Sequeira
Bsc (Hons)
Occupational Therapy

Nichola

**Nichola Duffy—BSc (Hons)
Occupational Therapy**

“What was important to me was that I accomplished my dreams without upsetting my family life. As there were good transport links to Carlisle I was able to take the children to school then set off for lectures. I was able to access study notes, presentations, books and journals online, which meant I could do a lot of my studying at home”.



Points:

N/A

Location:

Lancaster

Duration:

three years part-time

UCAS code:

N/A

DipHE Counselling

This course offers a high-quality blend of professional and academic qualification in keeping with the changing needs of the profession. This course is also accredited by the British Association for Counselling and Psychotherapy and will enable you to develop as a competent, reflective and ethical practitioner, within a variety of settings.

Credits:

120

Location:

Distance Learning

Duration:

two years part-time

UCAS code:

N/A

BSc (Hons) Management and Leadership in Health and Social Care (top up)

This course is a top-up degree programme which is appropriate for individuals working within health and social care settings who are managing, supervising, leading—or aspiring to do so—at all levels within your organisation.

Points:

300

Location:

Carlisle, Fusehill Street

Duration:

three years full-time

UCAS code:

B720

BSc (Hons) Midwifery

This popular course prepares you for your future role as a midwife through link tutors, midwife mentors and classroom teaching. We also enable you to develop the lifelong learning skills needed for this rewarding career.





Amanda

**Amanda Malner—BSc (Hons)
Nursing (Adult)**

“I chose the University of Cumbria because it has a good reputation for nursing. I’ve had a range of placements where I get to work with a lot of people with different conditions.”



For instructions on how to view interactive content see page 5. You can view this and other videos at www.cumbria.ac.uk/realstudents

Points:

240

Location:Carlisle, Fusehill Street, Lancaster
Furness College, Barrow-in-Furness**Duration:**

three years full-time

UCAS code:

B700

BSc (Hons) **Nursing (Adult)**

Supported by experienced academic and clinical practice staff you will be fully prepared for practice as a registered adult nurse. Working in this specialised area will give you the opportunity to work with patients who have a wide range of acute and chronic physical conditions. By the end of the course you will be ready to begin your career and qualified to join the NMC Register.

Points:

240

Location:

Carlisle, Fusehill Street, Lancaster

Duration:

three years full-time

UCAS code:

B730

BSc (Hons) **Nursing (Child)**

Nursing children is fun, is often challenging and will keep your feet firmly on the ground. Babies and young children can't tell you what's wrong, so you have to develop acute powers of observation and deduction to work it out for yourself. You will be supported by expert academic and clinical practice staff and will be fully prepared for practice as a registered child nurse, and qualified to join the NMC Register.

Points:

220

Location:

Carlisle, Fusehill Street, Lancaster

Duration:

three years full-time

UCAS code:

B763

BSc (Hons) **Nursing (Learning Disability)**

As a registered learning disability nurse your main aim is to support the well-being and social inclusion of people with a learning disability by improving or maintaining their physical and mental health; by reducing barriers; and supporting the person to pursue a fulfilling life. When you graduate you will be ready to begin your career in this specialised area, as our qualification enables you to join the NMC Register.



Points:

220

Location:Carlisle, Fusehill Street
Lancaster**Duration:**

three years full-time

UCAS code:

B760

BSc (Hons)**Nursing (Mental Health)**

Supported by expert academic and clinical practice staff you will be fully prepared for practice as a registered mental health nurse. This profession involves helping those affected in their journey towards discovering a more positive way of living and healthier ways of combating challenging emotional times. By the end of the course you will be ready to begin your career in this specialist field, as our qualification enables you to join the NMC register.

Points:

280

Location:Carlisle, Fusehill Street
Lancaster**Duration:**three years full-time
four years part-time**UCAS code:**

B920

BSc (Hons)**Occupational Therapy**

One third of this course is spent on placement working with qualified therapists, helping you gain experience in subjects such as OT in mental health, neurology and oncology, and physical health and trauma. Successful completion of the course makes you eligible to apply for registration with the Health and Care Professions Council and professional membership of the College of Occupational Therapists.

Points:

300

Location:

Carlisle, Fusehill Street

Duration:

three years full-time

UCAS code:

B160

BSc (Hons)**Physiotherapy**

If you enjoy learning about the human body and health-related subjects, this course is for you. When you graduate, you are eligible to apply to register with the Health and Care Professions Council and become a full member of the Chartered Society of Physiotherapy. A wide range of posts are available in hospitals, education, private practice, industry, management and community work.

Credits:

120

Location:Carlisle, Fusehill Street
Lancaster**Duration:**

two years part-time

UCAS code:

N/A

BSc (Hons)**Practice Development (Top-up)**

The BSc (Hons) Practice Development is a top-up degree for health and social care workers who have studied to Diploma in Higher Education level. A particular feature of the Practice Development framework is the opportunity it provides you to define your own pathway title for your target award, further enabling the award to reflect your individual and employer choice.

Points:

80

Location:

Energun, Workington

Duration:

three years part-time

UCAS code:

N/A

FdSc**Radiation Protection**

This qualification has been specially designed for those who want to move from a practical or technical role to a professional career in Radiation Protection. The course has strong academic content supported by a practical work-based element. If you successfully complete the foundation degree, you will be eligible to progress onto the third year of the BSc (Hons) Radiation Protection.

Credits:

240

Location:

Energun, Workington

Duration:

two years part-time

UCAS code:

N/A

BSc (Hons)**Radiation Protection (Top-up)***

This course builds upon the knowledge you gained during the FdSc Radiation Protection. It also contains a mix of academic content and practical work and will prepare you fully for a professional career in this area.



Points:

300

Location:Carlisle, Fusehill Street
Lancaster**Duration:**

three years full-time

UCAS code:

B821

BSc (Hons)**Radiography (Diagnostic)**

Our contemporary curriculum taught in a friendly, informal yet professional atmosphere means our students are in a very strong position to start their careers after graduation. We have made a £2 million investment in new digital imaging equipment to make sure your study and learning is cutting-edge.

Points:

240

Location:Carlisle, Fusehill Street
Furness College, Barrow-in-Furness**Duration:**

three years full-time

UCAS code:

L501

BA (Hons)**Social Work**

If you wish to be a social worker this is the course for you. It comes with 170 days of assessed practice in placements, which can be in the UK or overseas. The degree is fully validated by the Health and Care Professions Council and meets the Social Work Standards of Proficiency.

Points:

200

Location:Carlisle, Fusehill Street
Lancaster**Duration:**BA(Hons)—three years full-time
six years part-time
Cert HE—one year full-time
two years part-time**UCAS code:**

L502

BA (Hons)/Cert HE**Working with Children and Families: Child, Young People and Family Studies**

Focusing on children and young people up to the age of 19, this degree is for you if you know you want to work in the area but are unsure which career route to take.



Points:

200

Location:

Carlisle, Fusehill Street

Duration:

three years full-time

six years part-time

UCAS code:

L502

BA (Hons)**Working with Children and Families: Early Childhood Studies**

This course is delivered by an experienced multi-agency team, one day per week so you can combine studies with work and family commitments. You will have two weeks' work experience each year to gain practical experience. This can lead you to a variety of careers with young children such as baby rooms, nurseries, children's centres and schools.

Credits:

240

Location:

Carlisle, Fusehill Street

Lancaster

Duration:

one year full-time

two years part-time

UCAS code:

See website

BA (Hons)**Working with Children and Families (Top-up)***

This course is excellent preparation for a career working with children and their families. This new course is delivered by a multi-agency team with a proven record of success in both related courses and other vocational areas, for example Social Work and Teacher Training. The course covers a wide range of issues affecting children and families in today's society, and prepares you for a successful career in this field.

Hayley Madden

BSc (Hons) Learning Disability Nursing

Having worked in sales for an electronic company, Hayley felt that her career held no progression, challenges or job satisfaction. She knew that she wanted make a difference to people's lives and decided to take action and study Learning Disability Nursing.

Hayley is really enjoying the course. "I like the variety it offers. I have met so many different people from so many different walks of life. You have the opportunity to learn so much about yourself and better yourself in all sorts of areas."

The course has already opened up some exciting opportunities for Hayley. She attended the Positive Choices Conference in 2011, designed for student nurses to celebrate the contribution they make. She was also runner-up for the Fiona Law Practice Innovation award, announced at the conference.



Hayley has also had two job offers off the back of various placements that form part of the course. These opportunities have helped Hayley realise the value in a university education. "Coming to university has changed my life. I now have completely different views and I am more open-minded towards people."

Hayley is proud of the determination and hard work that she has applied to her course and is looking forward to applying this to her future career, when she hopes to be a health visitor or a community nurse.

Humanities

Language and ideas have always been of the utmost importance to you—our humanities degrees will feed and grow your enquiring mind in a strong, supportive environment where every student is valued.

They are degrees that can lead to a specific career such as journalism, event management or exciting media roles, but the quality of the programmes means that they are excellent preparation for a wide variety of careers. All take care to enhance your employability with a range of approaches from employability modules incorporated into programmes to focused placement opportunities.



Nicole

“Studying Religious Studies was the best decision I’ve ever made. The course has taught me about various religions and equal opportunities. I have acquired various transferable skills. Not only is the course interesting, but all the lecturers are helpful and friendly, who will go to any lengths to help you as a student.”

Nicole Kendall
BA (Hons) Religious Studies

94% OF ENGLISH
STUDENTS AGREED THEY
GOT THE ADVICE AND
SUPPORT THEY NEEDED

Darren

Darren Harper
BA (Hons) English
and Creative Writing

“Over the past three years my creative writing interests have led to several opportunities. Part of this has included attending regular open-mic events where you read your own work in a friendly environment and share ideas with other writers. I also started up another event in Carlisle with other local writers.”



Points:

BA (Hons)—240

DipHE—80

Location:

Lancaster

Duration:BA (Hons)—three years full-time
four to six years part-time

DipHE—two years full-time

UCAS code:

BA (Hons) - Q300L

DipHE - Q301L

Points:

BA (Hons)—240

DipHE—80

Location:

Lancaster

Duration:BA (Hons)—three years full-time
four to six years part-time

DipHE—two years full-time

UCAS code:

BA - QW38L

DipHE - QW3VL

Credits:

240

Location:

Carlisle, Brampton Road

Duration:one year full-time
two years part-time**UCAS code:**

N820

BA (Hons)/DipHE English

We are number one for English in the North West according to the *Guardian* League Tables 2012 and scored very highly on the 2012 National Student Survey for student support. You join a lively and friendly academic community, with staff who offer high levels of academic contact and support. This is a flexible and popular literature programme which provides you with valuable skills and a knowledge base to help you succeed in your chosen career. This may be focused on literature but many graduates go on to successful professional careers in the public and private sectors.

BA (Joint Honours)/DipHE English and Creative Writing

Combine your literary studies with your aspirations as a writer and develop your work in a supportive and creative atmosphere. English graduates can enter a variety of careers which demand a high level of analytical and interpretative skills as well as ability in written and oral communication. A number of our graduates go on to publish their writing after leaving us whilst others undertake postgraduate study.

BA (Hons) Event Management (Top-up)

The BA (Hons) Event Management Top-up year provides you with the essential information and skills toolkit you will need for working in the ever growing and changing events employment sector. The course team includes academics with a blend of both academic and industry experience. Career opportunities in the performance, festivals and event management sector are many and varied with hospitality, leisure and tourism sectors also offering opportunities.





Points:

240

Location:

Carlisle, Brampton Road

Duration:three years full-time
four to six years part-time**UCAS code:**

P500

Entry requirements:

FdSc/FdA/HND or equivalent

240 credits

Location:

Carlisle, Brampton Road

Duration:

one year full-time

UCAS code:

P3C0

BA (Hons) Journalism

Designed to launch your journalism career, you'll develop your skills and knowledge to work in the UK's 24/7 modern media environment, and get extensive real-life newsroom experience.

BA (Hons) Mass Communications (Top-up)

The degree that equips you to work in the mass communication sector including television, film, broadcast journalism, online publishing and broadcasting. This course will enable you to acquire the key skills needed to prosper in this growing and vibrant part of the economy.

Points:

N/A

Location:Carlisle, Fusehill Street
Lancaster**Duration:**

four years part-time

UCAS code:

N/A

Credits:

N/A

Location:Carlisle, Fusehill Street
Lancaster**Duration:**

two years part-time

UCAS code:

N/A

Points:

BA (Hons)—200

DipHE—80

Location:

Lancaster

Duration:

three years full-time

four to six years part-time

UCAS code:

BA (Hons) - V620L

DipHE - V628L

FdA**Practical Theology***

This is a vocational programme for those seeking to enter recognised public ministry. Successful completion allows you to top-up to full BA (Hons) Practical Theology.

BA (Hons)**Practical Theology
(Top-up)***

This top-up degree programme enables students who have completed a FdA in Practical Theology to complete the BA (Hons) in Practical Theology. The award seeks to integrate academic and work-based learning within the context of a vocational programme with a particular focus upon those seeking to enter recognised public ministry (QAA Dip HE Qualification Benchmark).

BA (Hons)/DipHE**Religious Studies**

The programme has a national reputation for theology, Christian ethics, biblical studies and world religions. You gain knowledge and academic skills, but you also grow personally, in ways essential to independent learning and employability in a very supportive learning environment.

Darren Harper

BA (Hons) English and Creative Writing

A love of English and creative writing created a pleasant dilemma for Darren Harper. He wanted to study one or the other at degree level but which to choose? The choice was made easy by the joint honours degree offered by the University of Cumbria.

“I was very interested in the joint honours programme as it would allow me to pursue my interests in both disciplines. Before applying to UoC I had really enjoyed studying English Literature for my Access Course, so studying what I was interested in, and what I enjoyed, was a good idea. My interest in literature led to an interest in writing, so the combination seemed like a great choice,” said Darren.

Darren who studied at our Lancaster campus and was originally from Oldham, liked the character of the university. In particular, his lecturers’ enthusiasm and passion for teaching their subject which translated into engaging lectures, the diverse range of module choices and the effective tutorial system that really helped him develop. It meant the recommendations from friends to study at the University of Cumbria were good advice indeed.



Darren made sure he pushed his own boundaries by getting involved in initiatives outside his course: “Over the past three years my creative writing interests have led to several opportunities. Part of this has included attending regular open-mic events where you read your own work in a friendly environment and share ideas with other writers. I also started up another event in Carlisle with other local writers.”

Writing quality has made big strides due to study and free-time activities. “I have submitted short stories to journals and plays to theatre companies. One of my short stories was runner-up for a prose award at the university and I have had one of my short plays performed at a charity event. Another play was shortlisted at a small theatre company and I have also been writing theatre reviews for an online site, after being encouraged to do so by one of the lecturers.”

Law and Social Sciences

Often at the heart of social policy debates are issues related to the criminal justice system. We reflect the interest and importance of the issues with our law and criminology degrees which have at their core, a focus on equity, social justice and public service.

They offer a range of career routes on graduation including the police service, the legal profession, probation and prison services and are designed to make sure you can make a strong, professional contribution to society.

100% OF LAW
STUDENTS SAY STAFF
ARE GOOD AT
EXPLAINING THINGS

Ann

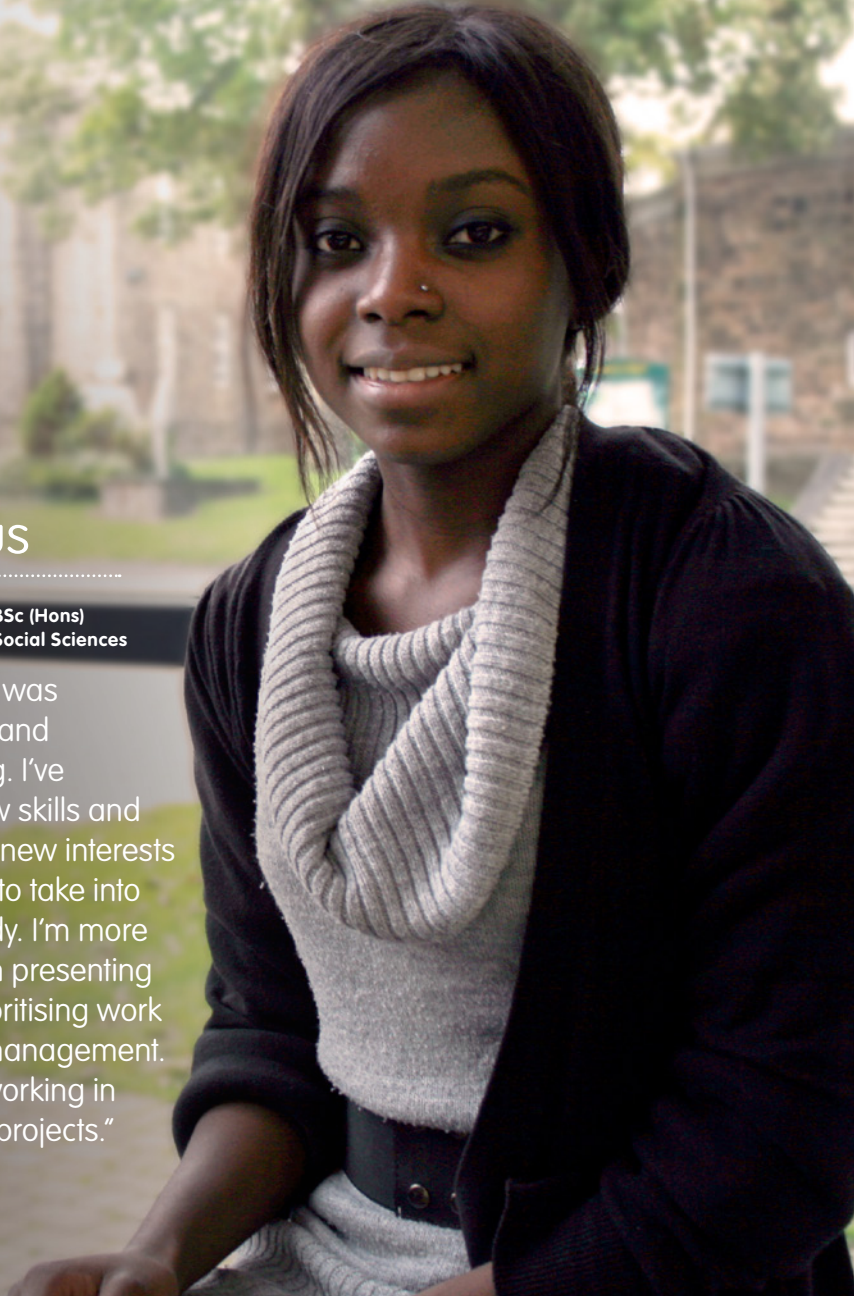
"The law staff are a dedicated team with diverse professional and academic experiences supporting and caring for you throughout your study."

Ann Thanaraj
Senior Lecturer in Law

Precious

**Precious Mwale, BSc (Hons)
Criminology and Social Sciences**

"My degree was interesting and challenging. I've gained new skills and developed new interests that I want to take into further study. I'm more confident in presenting myself, prioritising work and time management. I enjoyed working in groups on projects."



Points:

200

Location:

Carlisle, Fusehill Street

Duration:three years full-time
four to six years part-time**UCAS code:** C810**Points:**

BA (Hons)—200

DipHE—80

Location:

Carlisle, Fusehill Street

Duration:BA (Hons)—three years full-time
four to six years part-time
DipHE—two years full-time**UCAS code:**

BA (Hons) - LM31F

DipHE - MM91F

Points:

BSc (Hons)—200

DipHE—80

Location:

Carlisle, Fusehill Street

Duration:BSc (Hons)—three years full-time
four to six years part-time
DipHE—two years full-time**UCAS code:**

BSc (Hons) - LM39F

DipHE - LM3YF

BSc (Hons) Applied Psychology

Applied Psychology includes all the core areas in psychology: developmental, social, biological, cognitive, research methodologies and individual differences. The applied nature of the course means that you can focus on how psychology is used in the real world, to inform policy and practice. This course is ideal for careers in clinical, forensic or educational psychology.

BA (Hons)/DipHE Criminology and Law

This is an exciting, engaging programme designed for those aspiring to a career in the criminal justice and criminal law sectors. Our graduates have pursued careers in the police, probation and youth offending teams amongst others.

BSc (Hons)/DipHE Criminology and Social Sciences

Designed to challenge and explore new perspectives on criminology and the criminal justice system, this course works in tandem with other disciplines including psychology, sociology and social policy to provide a greater understanding and deeper knowledge of these complex areas. Our graduates have gone on to develop their careers in the police, probation, prison services, and youth and community sector.



Points:
280

Location:
Carlisle, Fusehill Street

Duration:
three years full-time
four to six years part-time

UCAS code:
M100

Points:
80

Location:
Lancaster
Duration:
three years full-time
four to six years part-time

UCAS code:
L530

Credits:
240

Location:
Lancaster
Duration:
one year full-time
two years part-time

UCAS code:
L53Y

LLB Law

We provide excellent and innovative legal education. Fully accredited by the legal profession, our law degree is taught by tutors experienced in both academia and the legal profession and provides the academic stage of your legal training. Your personal development and career planning are at the forefront of our legal education. All our curriculum is designed to guide and support you towards qualifying as a practising solicitor or barrister.

BA (Hons) Youth and Community Work

If you're passionate about enabling young people to achieve their potential, this programme provides you with an exciting opportunity to study for a much sought-after professional qualification. It will enable you to work in a diverse range of youth and community settings, within statutory and voluntary sectors, including youth services, domestic violence charities, drug and alcohol projects, prisons and young offender institutes. You will also complete three varied practical placement opportunities providing you with the perfect platform to begin a career in this field.

BA (Hons) Youth and Community Work (Top-up)

This programme is suitable for workers in the field who already have a professional youth work qualification and a diploma or foundation degree in Youth and Community Work. It is ideal if you want to further your personal development, progress your career and top up to a BA (Hons) degree. A wide range of teaching methods are employed throughout the programme. They include: formal lectures, seminar activities, debates, research projects, case study analysis and posters and exhibitions of work.

Lorraine Cluckie

.....
**BSc (Hons) Applied
 Psychology**



After working as an audiologist for many years, Lorraine decided to change direction and became a support worker for parents with young children. To broaden her knowledge and to gain further experience she began working as a support worker for Headway, a brain injury charity.

As time went by, Lorraine began to realise that she would like to become a forensic psychologist. “I love working with people and I am really interested in how our brains work and what alters behaviour and why we are not all the same—I find it all fascinating,” she says.

Currently into her third year of studying, Lorraine is well on her way to gaining first-class honours and has been rewarded for achieving the highest average mark in her Faculty. In the future, Lorraine knows what she wants to do. “I intend to stay on and complete my master’s so the university is stuck with me for a bit longer! I have built up my confidence and I now feel that I will not stop trying until I get where I want to be with my career.”

Performance

The world is a stage and whether you want to tread the boards or make things go like clockwork back-stage, our degrees give you the right platform to shine.

Based at our artistic hub – our Brampton Road campus in Carlisle, you will be working with similarly enthusiastic student colleagues and lecturers. It's a great learning and working environment where you will develop and grow in your field chosen from dance, performance, musical theatre and stage management.

95% OF DIPHE
DRAMA STUDENTS
ARE IN WORK OR
STUDY 6 MONTHS
AFTER FINISHING

Sara

“The course leaders completely understood our talents and really guided us. We were encouraged to experiment and this resulted in a fabulous learning environment.”

Sara Whittaker
BA (Hons) Performing Arts

Rochelle

Rochelle Watson
BA (Hons) Performing Arts

“You have the opportunity to experiment and push boundaries in rehearsals and you participate in as many shows as you want outside your assessments. I loved everything about the university experience. You meet so many friends and encounter loads of different opportunities but also learn about life experience.”



Points:

280

Location:

Carlisle, Brampton Road

Duration:three years full-time
four to six years part-time**UCAS code:**

WW54

BA (Joint Hons)**Dance Performance
and Drama Performance**

This course is especially designed for students wishing to explore contemporary and popular dance techniques, choreography and drama performance. We provide opportunities to perform in productions and participate in workshops led by visiting professional practitioners. Graduates seek roles as performers and in a wide variety of sectors including the media and teaching.

Points:

280

Location:

Carlisle, Brampton Road

Duration:three years full-time
four to six years part-time**UCAS code:**

WW53

BA (Joint Hons)**Dance Performance and
Musical Theatre Performance**

This course is especially designed for students wishing to explore contemporary and popular dance techniques, choreography and musical theatre performance, with a special emphasis on singing. We provide opportunities to perform in productions and participate in workshops led by visiting professional practitioners. Graduates seek roles as performers and in a wide variety of sectors including the media and teaching.

Points:

BA (Hons)—240

Location:

Lancaster

Duration:BA (Hons)—three years full-time
four to six years part-time**UCAS code:**

BA (Hons) - W400L

BA (Hons)**Drama**

If you are seeking a very practical degree, exploring drama through performance-based assessments this is the course for you. Some performance exams are currently staged at the Dukes Theatre, Lancaster, a professional theatre, where you may also explore a variety of technical, administrative and production roles. Former students have embarked on careers including television, theatre, theatre in education and stage management.



Matthew

Matthew Aitchison—BA (Joint Hons) Drama Performance and Technical Theatre

“Everybody sees each other as one big family”



BRING THIS PAGE TO LIFE

WITH THE FREE AURASMA APP

For instructions on how to view interactive content see page 5. You can view this and other videos at www.cumbria.ac.uk/realstudents



Points:

280

Location:

Carlisle, Brampton Road

Duration:three years full-time
four to six years part-time**UCAS code:**

WW43

BA (Joint Hons)**Drama Performance and Musical Theatre Performance**

This course explores contemporary and popular dance techniques, choreography and musical theatre performance, with a special emphasis on singing. You will participate in workshops led by professional practitioners and perform in productions, to help develop your singing and performance technique. After graduation, you can seek roles as a performer in a wide variety of sectors including musical theatre productions, dance productions, the media and teaching.

Points:

100

Location:

Carlisle, Brampton Road

Duration:two years full-time
four years part-time**UCAS code:**

WN98

FdA**Performance, Festivals and Events***

Festivals and other cultural events are now key to promoting awareness of and an involvement in the arts, within community settings and in the arena of tourism. Our courses benefit from contributions from event managers and company directors, as both guest speakers and module tutors.

Points:

280

Location:

Carlisle, Brampton Road

Duration:three years full-time
four to six years part-time**UCAS code:**

W440

BA (Hons)**Performing Arts**

A practically orientated, skills-intensive course that encourages creative exploration and theatre making, within the areas of dance, drama, musical theatre and production design and technology. It includes intensive contributions from visiting professionals. Graduates go on to careers as performers, technicians and creators.

Credits:

240

Location:

Carlisle, Brampton Road

Duration:one year full-time
two years part-time**UCAS code:**

W493

BA (Hons)**Production (with pathways)
(Top-up)**

This is a one-year course for those with a foundation degree, or equivalent, in a live-production-related subject. It offers the opportunity to work on a variety of productions to develop academic and professional understanding and practice leading to an honours degree. It can lead to careers in performance, production and technical theatre.

Points:

100

Location:

Carlisle, Brampton Road

Duration:two years full-time
four years part-time**UCAS code:**

W450

FdA**Technical Theatre**

A practical degree for people passionate about all aspects of stage management. You will be working on a variety of live productions, often with professional directors, choreographers and musicians.





Matthew Aitchison

.....

BA (Joint Hons) Drama Performance and Technical Theatre



Local student Matthew Aitchison has always known what he has wanted to do in life and how to achieve it.

He said: "I have always loved drama and performing and have always wanted to be a drama teacher. I chose my particular course because I was interested in learning more about the technical side of theatre. I work for Razzamataz Theatre Schools and I knew that knowing about this side of the business would prove to be an advantage when putting a show together.

"I love how technical theatre has introduced us to different resource areas, giving us the ability to do a wide range of activities when working on shows. I love drama, as it allows us to freely explore texts, and how the course has been shaped to help you learn a great deal in what has seemed to be a short space of time."

Matthew is on track to see his dreams fulfilled and hopes one day to be a primary school teacher as well as running a drama school.

Policing

Our policing and investigation degrees prepare you for a wide range of career opportunities from dealing with the great British public directly to important behind-the-scenes professional roles.

All are taught by experienced lecturers who have worked as police officers or professionals in the criminal justice system.

96% OF FDSC POLICING
STUDENTS SAID THAT
THE STAFF MADE THE
SUBJECT INTERESTING

Marina

Marina Mitzeva
BSc (Hons) Policing, Investigation
and Criminology

"I had looked at different courses in the area and this course seemed very interesting by combining different aspects of crime and crime prevention, with the opportunity to tailor it to my own personal interests."

Points:
80

Location:
Carlisle, Fusehill Street

Duration:
two years full-time
four years part-time

UCAS code:
L435

FdSc Policing

This programme represents a unique opportunity to gain a combination of academic understanding, professional competence and practical policing skills. The course is developed in partnership with Cumbria Constabulary, and staff include both academics and serving police officers. The programme follows the national curriculum required for Initial Policing Learning and Development for police officers. Successful completion of the course allows progression to the final year of the BSc (Hons) in Policing, Investigation and Criminology.

Points:
BSc (Hons)—200
DipHE—80

Location:
Carlisle, Fusehill Street

Duration:
BSc (Hons)—three years full-time
four to six years part-time
DipHE—two years full-time

UCAS code:
BSc (Hons) - LM49
DipHE - 112M

BSc (Hons)/Dip HE Policing, Investigation and Criminology

This exciting programme equips you with academic, research, analytical and problem-solving skills, providing contemporary and relevant knowledge and understanding to meet your career aspirations within the challenging policing and criminal justice sector. The teaching team consists of serving police officers and academic staff with extensive teaching, research and professional experience in this field. If you have successfully completed one of our foundation degrees (Policing, Policing (Community Safety) or Policing Studies) you are able to apply for a full honours degree.





Robert Ewin

FdSc Policing (Community Safety)

Robert Ewin has lived in Cumbria all his life and has always been committed to public service. It's no surprise to find that he has an exemplary record of voluntary and paid public service.

His career with Cumbria Constabulary began in 2008 as a Community Volunteer. This role focused his desire to join Cumbria Constabulary and in early 2009 he began his first paid employment with the constabulary. Since then he has worked in a number of roles, including Communications Centre Dispatcher, Helpdesk Assistant and latterly with the Civil Contingencies and Events Planning Unit working alongside the Immigration Crime Team.

Whilst performing his paid roles, he continued to work as a volunteer and progressed from the Crime Management Unit to Communications Centre Assistant at police HQ, and then to Neighbourhood Policing Team Assistant at Hunter Lane, Penrith.

"After working over 2,000 hours in my voluntary roles so far, I decided I wanted to develop my skills further.



I then joined the Special Constabulary in 2010 and trained at the award-winning facility at Carleton Hall Police HQ, Penrith. At the same time I also began studying Policing (Community Safety) at the University of Cumbria which has focused and developed my policing skills, knowledge of police legislation and practice."

Robert's skills have also developed outside the police and in late 2010 he began to volunteer as a Community First Responder with North West Ambulance Service, progressing to Field Trainer and Team Leader in 2012. "Working as a Special Constable and being a student at the university gives me the opportunity to develop policing skills and supplement my studies and working practices".

Robert hopes to complete the BSc (Hons) Policing, Investigation and Criminology in 2013.

Science & Engineering

Scientific method is what matters to you – its beauty underpins your enquiring scientist's mind and propels your determination to study at undergraduate level.

Our science degrees span a wide range of subjects, including animal conservation, applied science, forensic science and sustainable energy technology, and all come with placement opportunities to enhance your employability once you graduate.



Hannah

“Conservation is my passion and I have now worked in conservation research for 5 years. I am currently preparing papers for publication and I have just completed an MSc in Environmental Health in Norway. I would not have been able to study for an MSc or carry out all of my conservation work without my degree.”

Hannah Cross,
BSc (Hons) Animal
Conservation Science

96% OF FDSC
 FORENSIC SCIENCE
 STUDENTS AGREED
 STAFF ARE GOOD AT
 EXPLAINING THINGS

Geoff

Geoff Harney
FdSc Forensic Science

"My long term goals are to eventually complete a postgraduate course and work within a scientific laboratory, to complete research and develop scientific practices that could help in the forensic community. This foundation degree is my first important step to achieve my goal."



Points:

200

Location:

Ambleside

Duration:

three to four years full-time
four to six years part-time

UCAS code:

BSc (Hons) - D327
placement option - D390

Entry requirements:

FdSc/FdA/HND or equivalent

Location:

Ambleside

Duration:

two years full-time
three to four years part-time

UCAS code:

CFG0

BSc (Hons)**Animal Conservation Science
(with or without placement)**

This is an innovative, exciting course that provides a thorough grounding in the core disciplines of conservation biology, addressing conservation from the animal towards the landscape scale. You have the opportunity to take an optional one-year work placement. We have very high graduate employment rates and this programme equips you with the skills required in the conservation sector. Graduates have embarked on a range of careers including conservation officers, wildlife officers and conservation specialists.

FdSc**Applied Science**

Spanning the key areas of applied science, this course is a great way to develop your employability without narrowing down your choice of career, which could include biomedical research, the pharmaceutical industry or teaching.

Entry requirements:

FdSc/FdA/HND or equivalent

Location:

Ambleside

Duration:one year full-time
two years part-time**UCAS code:**

FCG0

Points:

240

Location:

Ambleside

Duration:three to four years full-time
six years part-time**UCAS code:**BSc (Hons) - C150
placement option - C151**BSc (Hons)****Applied Science (Top-up)**

Applied Science top-up provides a solid grounding in contemporary scientific disciplines, while offering you the opportunity to develop greater strengths in a specialised field according to your interests or career aspirations. This is the route to convert your relevant HND, foundation degree or similar into a degree.

BSc (Hons)**Conservation Biology
(with or without placement)**

This degree examines the theory and practice of conservation biology by studying ecology, threats to biodiversity, landscape ecology, geographic information systems (GIS), wildlife management and conservation policy. You will often learn on location, undertaking real world assignments.

Points:

80

Location:

Ambleside

Duration:two years full-time
four years part-time**UCAS code:**

F411

Entry requirements:

FdSc/FdA/HND or equivalent

Location:

Ambleside

Duration:one year full-time
two years part-time**UCAS code:**

F410

Points:

240

Location:

Energus, Workington

Duration:

three years full-time

UCAS code:

H224

FdSc**Forensic Science**

Forensic science tests the evidence at the scene of the crime. We get Crime Scene Investigators (CSI) to leave traces of their crimes for you to investigate at our 'crime house'. This practical grounding prepares you for a career as a CSI or forensic analyst, or in a related area of science. Alternatively you can progress onto the BSc (Hons) Forensic Science (Top-up).

BSc (Hons)**Forensic Science (Top-up)**

This course allows you to take your Forensic Science FdSc to the next level. You have the opportunity to challenge yourself and study a full range of forensic applications in depth. This top-up degree will take your career in investigatory, enforcement and monitoring work to new heights.

BEng (Hons)**Sustainable Energy Engineering**

Engineers with a sound understanding of sustainable energy technologies will play a key role in the move to a low-carbon economy. You will benefit from gaining a firm grounding in core engineering subjects such as mathematics, modelling, materials, electronics and thermo fluids, as well as learning about established and emerging renewable energy technologies. This degree will equip you to start your career in this growing renewable sector, including offshore and onshore wind farms, small and large-scale biomass boilers, anaerobic-digestion plants and small-scale hydro sites. Access to these sites will form part of a suite of practical hands-on activities aimed at giving you a better understanding of renewable energy deployment.

Thomas Fisher

BEng (Hons) Sustainable Energy Technology



Being interested in the development of renewable resources, and wanting to work in the engineering sector, was the spur for Tom Fisher to seek out our Sustainable Energy Technology degree.

Tom was previously a student at Carlisle College studying level 3 engineering. This course further developed his passion for the subject and he was determined to enhance his knowledge and understanding especially of sustainable energy.

After reviewing the available university degrees, he found our degree the most appealing. The course content impressed, as did the career opportunities in Cumbria that will develop as a result of Britain's Energy Coast™—a long-term initiative that will position Cumbria as a leading player in the global renewables and nuclear markets. Tom has liked what he has found at our Energus Workington site. "The Energus building has all the facilities that we need.

It's new and very well equipped, with flexible learning spaces, rooms and labs that we can access for assignments. Also, our lecturers are all industry experienced or academic experts and that comes across at all times."

The next steps for Tom after graduation are to start his career, potentially with a company where he has spent time on placement. "Eventually, I would like to be a consultant working on many different projects around the world with many different companies, furthering my knowledge and experience every time."

Sport

The number of career opportunities in the sporting sector continues to grow strongly with the globalisation of elite sport, the effect of major events such as London 2012 and a growing interest and awareness of the benefits of sport and physical activities in contributing to social policy goals such as health improvement, crime prevention and community cohesion.

Our range of sport degrees will position you for entry into the sector whether supporting the development of elite athletes, playing a key role in raising sport and physical activity participation or facilitating community development through sport.



Christopher

“Through a university lecturer, I was able to attain a short placement at Blackburn Rovers FC in the performance analysis department where I now have my internship. Without doing my degree at the University of Cumbria, this opportunity would most likely never have come along.”

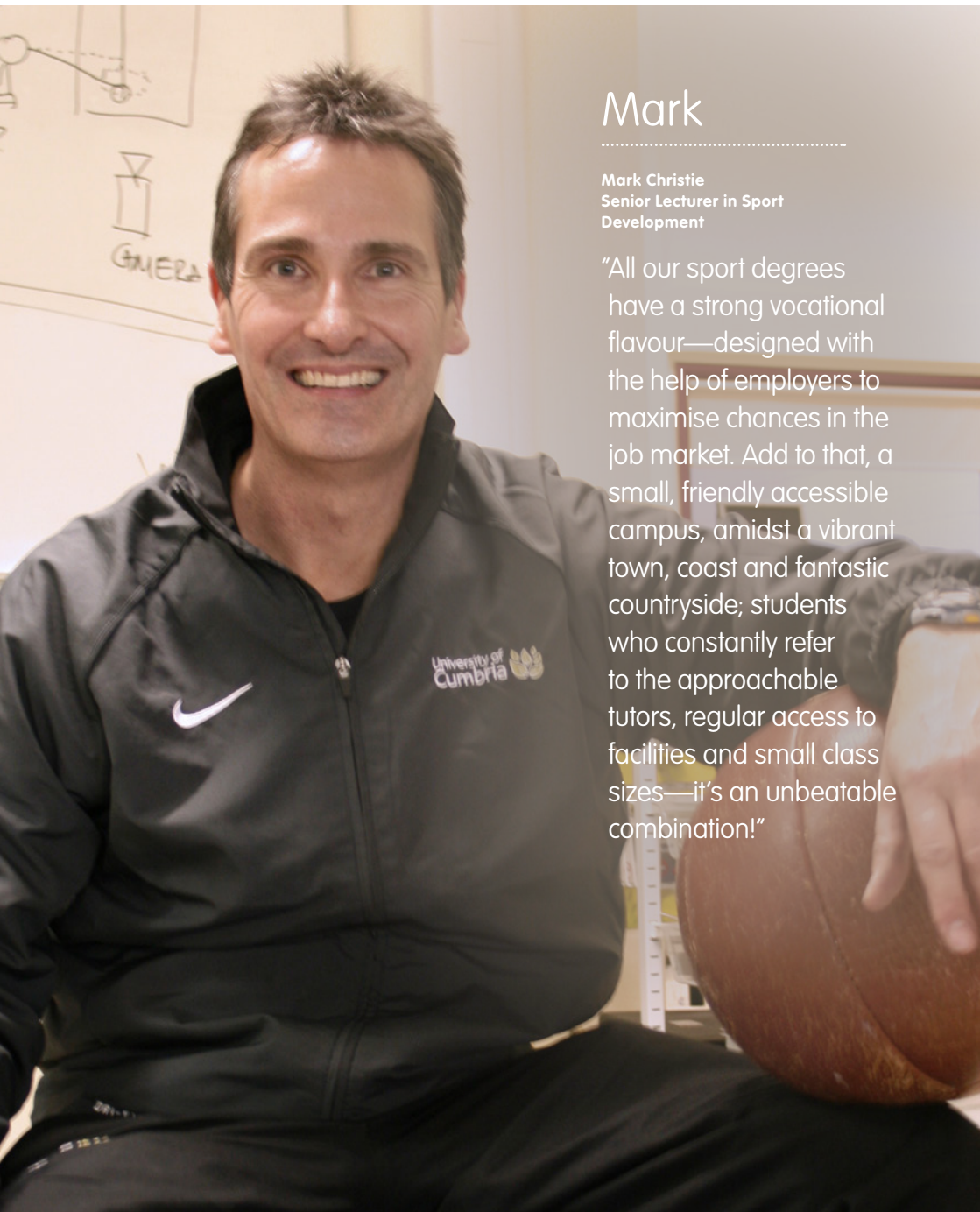
Christopher Nix
BA (Hons) Coaching
and Sport Development

95% OF BSC (HONS)
 COACHING AND SPORT
 DEVELOPMENT STUDENTS
 ARE IN WORK OR STUDY
 6 MONTHS AFTER FINISHING

Mark

Mark Christie
Senior Lecturer in Sport
Development

“All our sport degrees have a strong vocational flavour—designed with the help of employers to maximise chances in the job market. Add to that, a small, friendly accessible campus, amidst a vibrant town, coast and fantastic countryside; students who constantly refer to the approachable tutors, regular access to facilities and small class sizes—it’s an unbeatable combination!”



Points:

BA (Hons)—240

DipHE—80

Location:

Lancaster

Duration:

BA (Hons)—three years full-time

four to six years part-time

DipHE—two years full-time

UCAS code:

BA (Hons) - C604

DipHE - CX61

Points:

BA (Hons)—240

DipHE—80

Location:

Lancaster

Duration:

BA (Hons)—three years full-time

four to six years part-time

DipHE—two years full-time

UCAS code:

BA (Hons) - C601

DipHE - C607

BA (Hons)/DipHE Coaching and Sport Development

Developing and coaching both community-based and elite participants is what you want to do. This degree has a sound theoretical base and a very strong practical element, varying from coaching school children or running large community sport events to developing training programmes for elite athletes. Graduates from this course have gained employment and recognition as coaches, teachers and sport development officers. Other potential career routes include fitness consultancy, personal training and working for sport governing bodies, such as the FA and England Athletics.

BA (Hons)/DipHE Exercise, Physical Activity and Health

The increasingly strong alliance between sport and health sectors is at the heart of this highly vocational degree. It combines varied and exciting academic content with the acquisition of a range of key employable skills through a mix of community engagement projects, including organising sport events, community health walks or school sports sessions, and assisting local sport or health development teams. It opens up multiple career routes for graduates, including health promotion, sport development, facility management, event management and roles within the youth and community sector.





Points:

BA (Hons)—240

DipHE—80

Location:

Carlisle, Fusehill Street

Duration:

BA (Hons)—three years full-time

four to six years part-time

DipHE—two years full-time

UCAS code:

BA (Hons) - XCC6

DipHE - XC36

Points:

80

Location:

Carlisle, Fusehill Street

Duration:

two years full-time

four years part-time

UCAS code:

CX6D

Points:

BSc (Hons)—240

DipHE—80

Location:

Lancaster

Duration:

BSc (Hons)—three years full-time

four to six years part-time

DipHE—two years full-time

UCAS code:

BSc (Hons) - C600

DipHE - C609

BA (Hons)/DipHE Physical Education

This multidisciplinary course will help you discover the deeper philosophies of what physical education really is, including the creative approaches used when teaching physical activities to inspire youngsters through their own physical development. You will cover topics such as contemporary issues in sport and PE, the basis of human movement, anatomy, physiology, biomechanics and related psychological factors. The course includes a placement opportunity, and coaching, sport development and teaching are just some of the careers this course can lead to.

FdA Sport Coaching and Development

The vocational nature of this programme makes it ideal for those aspiring to a career in coaching at all levels of participation and performance. You will coach on placements in both years one and two, offering an ideal opportunity to identify and impress potential employers.

BSc (Hons)/DipHE Sport and Exercise Science

Further your understanding of what makes an athlete the best, or why physical activity is so important to health, by choosing this degree. Physiology, Biomechanics, Psychology, Nutrition and Exercise Testing and Prescription are just some of the modules you will undertake. Practical and vocational skills will be developed in weekly laboratory sessions and during your work placement. Exciting career routes include elite athlete support, exercise referral and health promotion.

Points:

240

Location:

Carlisle, Fusehill Street

Duration:three years full-time
four to six years part-time**UCAS code:**

CB69

Points:

100

Location:

Carlisle, Fusehill Street

Duration:two years full-time
four years part-time**UCAS code:**

CB63F

BSc (Hons)**Sport Rehabilitation**

This course equips you to focus on organising safe involvement in sport and exercise, working with individuals recovering from a sport-related injury, or with those seeking to enhance their performance levels. You'll gain additional vocational qualifications as well as applying your knowledge in real-life situations on placement. This degree can lead to employment in GP referral programmes, therapeutic work with sports clubs, teams and individual performers, or in consultancy.

FdSc**Sports Massage Therapy**

This course prepares you for your career in the growing sports sector and lets you apply your new knowledge to real-life situations on placements. It enhances your employability by offering a range of vocational awards and prepares you for a career in the exercise and fitness industry. After successful completion of this course, you can progress onto the BSc (Hons) Sport Rehabilitation course.

Katherine Morris

**BSc (Hons) Sport and
Exercise Science graduate
working for British Rowing**



Katherine Morris graduated from our BSc (Hons) Sport and Exercise Science course in 2009 and is now working as Participation Team Leader for British Rowing, covering the Wessex region in southern England.

Katherine's role with British Rowing involves developing opportunities for people to get started in and develop in the sport and, for the talented few, ensuring pathways to elite success, such as competing in future Olympic and Paralympic Games.

Katherine said: "I'm very passionate about the participation and coaching work we are doing for British Rowing. The recent Olympic Games have brought the sport to the attention of the British public and we want to make it more accessible for people to get involved at any level.

"I attended every rowing event at the London 2012 Olympic Games to offer my support both professionally and vocally! It was fantastic to see the quality of athletes we have in British Rowing."

Tim Barry, one of her lecturers, said: "It's fantastic to see one of our graduates in such an important role for British Rowing, and clearly making a major contribution to the sport. Katherine was highly dedicated to her studies whilst at university and she demonstrates that hard work and commitment pay off in terms of great job prospects within UK sport."

Course index

A		
Accounting.....	60, 63	Finance.....
Adventure and media.....	70	Fine art.....
Animal conservation.....	146	Festivals.....
Applied psychology.....	124	Forestry.....
Applied science.....	146	
B		G
Biology.....	146	Games design.....
Business management.....	63, 65	Graphic design.....
Business entrepreneurship.....	60	
C		H
Children and families.....	105, 110, 112	Health.....
Coaching.....	152, 155	
Community.....	126, 140	I
Computing and IT.....	63	Illustration.....
Computing innovations.....	60	Investigation.....
Conservation.....	94, 146	
Counselling.....	102	J
Creative writing.....	116	Journalism.....
Criminology.....	124, 140	
D		L
Dance.....	130	Law.....
Design.....	70, 75	Leadership.....
Diagnostic radiography.....	110	Learning support.....
Digital arts.....	70	Learning disability.....
Drama.....	130, 133	
E		M
E Commerce.....	63	Marketing management.....
Early years.....	86	Massage therapy.....
Education.....	86, 89, 97, 155	Mass communication.....
Engineering.....	148	Media.....
English.....	116	Mental health.....
Events.....	116, 133	Midwifery.....
Environment.....	98	Musical theatre.....
Exercise.....	152, 155	
F		N
Forensic science.....	148	Nursing.....
Family studies.....	110, 112	
Film.....	70, 73	O
		Occupational therapy.....
		Outdoor.....
		P
		Performance.....
		Performing arts.....
		Practical theology.....
		Practice development.....
		Primary education.....
		Production.....
		Professional practice.....
		Photography.....
		Physical education.....
		Policing.....
		Psychology.....
		Physiotherapy.....
		R
		Radiation protection.....
		Radiography.....
		Rehabilitation.....
		Religious studies.....
		Retail.....
		S
		Science.....
		Social sciences.....
		Social care.....
		Social work.....
		Special education needs.....
		Sport.....
		Sustainable energy.....
		T
		Teaching.....
		Television production.....
		Theatre.....
		Technical theatre.....
		Theology.....
		W
		Wildlife and media.....
		Woodland.....
		Y
		Youth work.....

More learning opportunities

Degrees offered by partner institutions.

We are proud to be working with a number of partner institutions. Details of their course provision can be found on their websites:

Askham Bryan College
www.askham-bryan.ac.uk

Belfast Bible College
www.belfastbiblecollege.com

Carlisle College
www.carlisle.ac.uk

Furness College
www.furness.ac.uk

Kendal College
www.kendal.ac.uk

Lakes College West Cumbria
www.lcwc.ac.uk

South Thames College,
London
www.south-thames.ac.uk



Course enquiries

Call us on 0845 6061144

Visit www.cumbria.ac.uk/enquiries

Email enquirycentre@cumbria.ac.uk



twitter.com/cumbriauni



facebook.com/universityofcumbria

This document may be viewed in electronic format on our website and can be made available in alternative formats (for example Braille).

Please contact the enquiry line above.





The small print

Call us on 0845 6061144

Visit www.cumbria.ac.uk/enquiries

Email enquirycentre@cumbria.ac.uk

The university will endeavour to take all reasonable steps to provide educational services in the manner set out in the prospectus and particularly for those set out in further documents. It does not however guarantee provision of such services.

This edition of the University of Cumbria's undergraduate prospectus describes the facilities and courses which the university intends to offer during the academic year commencing autumn 2013. However the university reserves the right to cancel, suspend or modify in any way necessary the details contained herein, without notice. While every effort has been made to ensure that the information contained in the prospectus is correct, no responsibility can be taken for inaccuracies.

Should industrial action or circumstances beyond the control of the university interfere with its ability to provide educational services, the university undertakes to use all reasonable steps to minimise the resultant disruption to those services.

Should you become a student at the university you will receive further documents describing teaching assessment and other educational services.

Should you become a student at the university, this notice shall constitute a term of any contract between you and the university. Any offer of a place made to you by the university is made on the basis that in accepting such an offer, you signify your consent to the incorporation of this notice as a term of any such contract.

Should you enrol at the university you are personally liable for prompt payment of your tuition and other fees in line with the university payment timetable. If you have outstanding debts, you will not be permitted to re-enrol at the university in future years. If you are in your final year of study you will not receive your certificate or formal transcript, or be allowed to graduate until your tuition fee debts are settled.

All prices quoted may be subject to change.

A carbon balanced prospectus



We have used carbon balanced paper for the production of this prospectus.

What is Carbon Balance Paper?

It's paper for which the carbon impact of the production and distribution process has been balanced, or offset, by the World Land Trust—an international conservation charity.

By specifying this accredited carbon balanced paper, we have saved 10,664 kgs of carbon as well as helping to preserve 895.78 square metres of land.

BY CHOOSING CARBON
BALANCED PAPER FOR
THIS PROSPECTUS, WE
HAVE HELPED THE
WORLD LAND TRUST:

SAVE

10,664

KGS OF CARBON

PRESERVE

895.78

SQ. METRES OF LAND

Design University of Cumbria, External Relations

Photography Lee Boswell Photography, Browell Photography,
Mark Elliott and University of Cumbria

Editor University of Cumbria, External Relations

Proofreading Much Better Text

Printing H&H Reeds Printers Ltd, Penrith

Paper ON Offset by Howard Smith Paper. ON Offset is made from elemental, chlorine-free pulp (ECF) obtained from sustainable wood forests and is recyclable and biodegradeable.

THANKS TO OUR
COVER STUDENTS

Grace Watson

BA (Hons) Fine Art, Year 0

Dan Asante

FdSc Sports Massage Therapy

Ben Vogt

BSc (Hons) Policing,
Investigation and Criminology

Molly Sidwells

BA (Hons) Fine Art, Year 0

**STAND
OUT FROM
THE
CROWD**

MA TRANSCULTURAL EUROPEAN
OUTDOOR STUDIES GRADUATE,
WAI-YIN CHEUNG

An excellent choice

Find out why Wai-Yin chose
postgraduate study at the
University of Cumbria

**Developing your career?
Love your subject?**

Just a few of the top reasons
to choose postgraduate study

**The University of
Cumbria Experience**

Success takes know-how...
and where better to learn



An orange speech bubble with a white outline, containing white text. The bubble has a tail pointing downwards and to the left.

**THIS DOCUMENT
MAY BE VIEWED IN
ELECTRONIC FORMAT ON OUR
WEBSITE AND CAN BE MADE
AVAILABLE IN ALTERNATIVE
FORMATS (FOR EXAMPLE
BRAILLE). PLEASE CONTACT
THE ENQUIRY CENTRE
BELOW.**

Enquiries 0845 6061144
www.cumbria.ac.uk



10 Student profile:
Wai-Yin Cheung
MA Transcultural
European Outdoor
Studies



33 Student profile:
Linda Fitzgerald
MA Contemporary
Fine Art



37 Student profile:
Sean Crooks
MBA



41 Student profile:
Mohammed Dawood
PGCE General Primary

CONTENTS

5 Welcome from the Vice-Chancellor

6 To PG or not to PG ...

Six reasons for choosing postgraduate study at the University of Cumbria

8 The University of Cumbria postgraduate experience

12 Here for you

Support when you need it

13 See for yourself

Information about our open evenings

14 Locations

Our campuses

24 Accommodation

Your options

26 Course listings by location

36 Course listings by course area

66 Your questions answered

67 Research degrees

74 Good value postgraduate study

Our fees explained



51 Student profile:
Stephanie Willson
MSc Image
Interpretation



58 Student profile:
Claire Feeney
MA Social Work



63 Student profile:
Vicki Stewart
MA Development
Training



63 Researcher profile:
Diane Warner
Studying for PhD



Lancaster

WELCOME

**From the Vice Chancellor,
Professor Peter Strike**



Studying at postgraduate level allows you to gain additional valuable skills and knowledge, enabling you to differentiate yourself in a fast-changing world and to progress your chosen career quickly.

Our range of programmes is designed to make this possible for you. We provide lecturers who have strong subject, career and research expertise who will support you in your determination to succeed.

To find out what our students and lecturers have to say, please read on. To find out more about us, join us at one of our open days and evenings—more details inside.

At the University of Cumbria we understand that students are looking to combine passion for a subject with the opportunity to put knowledge to good use. I am proud to be Vice Chancellor of a university that is committed to helping you in these aspirations.

With best wishes

Professor Peter Strike
Vice Chancellor

TO PG OR NOT TO PG...

Report "What do graduates do?" September 2013

91%

of postgraduates in employment are employed in a professional or managerial role, compared with 65% of first degree graduates.

Reasons for choosing postgraduate study at the University of Cumbria.

- 1 Starting out on your career ladder**
You want to stand out in the world of work and have decided that a postgraduate qualification on your CV will set you apart from other candidates.
- 2 Developing your career**
You are in a satisfying job in a sector you enjoy. You want to progress your career and believe a higher degree will take you to the next rung on the career ladder.
- 3 You want to teach**
You have a degree and want to use it to inspire young minds as a teacher. Our range of PGCE (Post Graduate Certificate in Education) courses will make sure you are qualified to do just that.
- 4 You love your subject**
You got immense pleasure from studying your subject at undergraduate level. Your quest for knowledge needs to continue and postgraduate study offers that opportunity.
- 5 Changing your career**
You are ready to change career direction and a postgraduate programme is how you can make that change.
- 6 We have a wide range of courses**
They span education, health, business, the arts, forestry, science and the outdoors. See pages 32-67 for course details.



THE UNIVERSITY OF CUMBRIA POSTGRADUATE EXPERIENCE

You're considering undertaking postgraduate study at the University of Cumbria. You may be attracted to a taught or research programme but you may not be fully acquainted with what we do, so please read on to find out what we stand for, why we have a strong reputation and why we think you should choose us.



Creative thinking

We are a university that fosters creativity, promotes innovation and celebrates new ways of thinking. We produce career ready graduates and work with graduates to further develop their expertise with postgraduate study.

Serving students

We are a university grounded in the real world, serving our students and the wide variety of communities in which we work. We are also, enterprising and dynamic and want to help our local communities develop and grow, economically and socially.

Long history

It's good to know that we have a long, successful track record. We were formed in 2007 from a number of successful higher education institutions. Our history can be traced back to the early 19th century and we are proud of our record of offering arts, business, science, health and wellbeing and teacher training and education programmes to people in the region, the country and beyond. Every student is valued at the University of Cumbria as an important contributor to our mission and our success.

Good value

A fairly priced postgraduate programme combined with the low cost of living make us one of the best value educational experiences available. Our postgraduate programmes offer professionally focused curriculum, specifically designed to give you the knowledge,



skills and training for your future or developing career. This is supported by our thorough understanding of key industries and employers in the region and beyond, with whom we connect through live projects, placements, work experience and graduate opportunities. This adds real value to postgraduate study as developing networks is a key way of enhancing your career development plans.

The personal touch

If you are studying on a taught programme, you will be assigned a personal tutor committed to assisting you in developing throughout your studies. For research programmes, support is provided by a team of supervisors. There is more detail about research degrees on page 69.

The right locations

You will find us in a number of convenient locations which are easy to get to—in Cumbria, Lancashire and London. We think you will like the character and ambience on our campuses. Students comment on how friendly they are. Pages 14-23 give you the full picture.

**EXPERIENCE
IT FOR YOURSELF.**

Visit us on an
open evening.
See page 13 for
details.

Wai-Yin Cheung

MA Transcultural European
Outdoor Studies

Wai-Yin travelled from Hong Kong to study full-time at the university's campus in Ambleside—a decision which was to change his life.

"The campus environment in Ambleside offered me a lot of amazing experiences in my learning and spare time. I liked the fact that the teaching was outside of the classroom. Using my experiences as an outdoor practitioner, I want to promote the awareness of environmental issues and inspire people about nature. The Transcultural European Outdoor Studies (TEOS) course is an important stepping-stone on this quest.

"I developed my self-learning and critical thinking skills which has helped me to enter the outdoor industries with a strong academic background."

After completing his studies, Wai-Yin has been able to realise his dream and is now a freelance naturalist expedition guide in the Antarctic Peninsula and Greenland. He oversees and manages boating and trekking passenger visits to these areas, ensuring safety and environmental factors are considered such as crevasses, ice thickness, animal behaviours and snow conditions. He also delivers lectures on the history, geography and ecology to sailing passengers.



"I developed my self-learning and critical thinking skills which has helped me to enter the outdoor industries with a strong academic background."



Wai-Yin Cheung
in the Antarctic
Peninsula

HERE FOR YOU

Support when you need it

Outstanding library and learning facilities come as standard as do top of the range computers and technology solutions to facilitate your study.



Smart working

We use an online learning environment, Blackboard, that allows you to work from any location with internet access from your computer or smartphone. Blackboard is a very flexible tool allowing you to work collaboratively with lecturers and fellow students. Our large range of e-learning services is available 24/7 online from wherever you choose to work. It incorporates e-Books, online journals and catalogues.

Services tailored to your needs

Support and development in your university postgraduate life—whatever that might be, from skills development, pastoral care, money advice, careers advice, health, wellbeing, disability and counselling support is all in place, ready when you need it. Please see www.cumbria.ac.uk/liss for more information. Take a look at the wide range of support available at www.cumbria.ac.uk/studentsupportguide

Accommodation

As a postgraduate student, we can assist you in finding the right type of accommodation that suits you. Visit www.cumbria.ac.uk/accommodation for more information.

Work and play

Take time to relax or workout at our health and sports facilities. They vary across our campuses and sites—you can find out more at www.cumbria.ac.uk/sport

Activism may be your chosen free time option. A vibrant and engaged Students' Union, with opportunities to get involved and have your say may appeal. Please see www.thestudentsunion.org.uk

SEE FOR YOURSELF

There is nothing like experiencing what we offer first hand. That includes talking to lecturers, current students and examining our facilities. You can do all of this on one of our postgraduate open evenings.

2013

Wed 6 November	PG routes into teaching	Lancaster
Wed 13 November	PG routes into teaching	Carlisle, Fusehill St
Wed 13 November	UG and PG open evening	London
Tues 26 November	PG virtual open day	Online
Wed 11 December	PG routes into teaching lunchtime drop-in	Ambleside Carlisle, Brampton Rd Carlisle, Fusehill St Lancaster
Wed 13 November	PG routes into teaching	London

2014

Wed 22 January	PG routes into teaching	Carlisle, Fusehill St Lancaster
Wed 19 March	PG routes into teaching	Carlisle, Fusehill St Lancaster
Wed 7 May	PG routes into teaching lunchtime drop-in	Ambleside Carlisle, Brampton Rd Carlisle, Fusehill St Lancaster
Wed 7 May	PG virtual open day	Online
Wed 21 May	PG routes into teaching	Carlisle, Fusehill St Lancaster
Wed 2 July	PG routes into teaching	Carlisle, Fusehill St London
Wed 2 July	UG and PG open evening	London
Wed 9 July	PG routes into teaching	Lancaster

FOR MORE INFORMATION VISIT...

www.cumbria.ac.uk/openday or email enquirycentre@cumbria.ac.uk



VIRTUAL OPEN DAYS

Our virtual open days give you a feeling of what it's like to study with us.

Tuesday 26 November 2013
Wednesday 7 May 2014

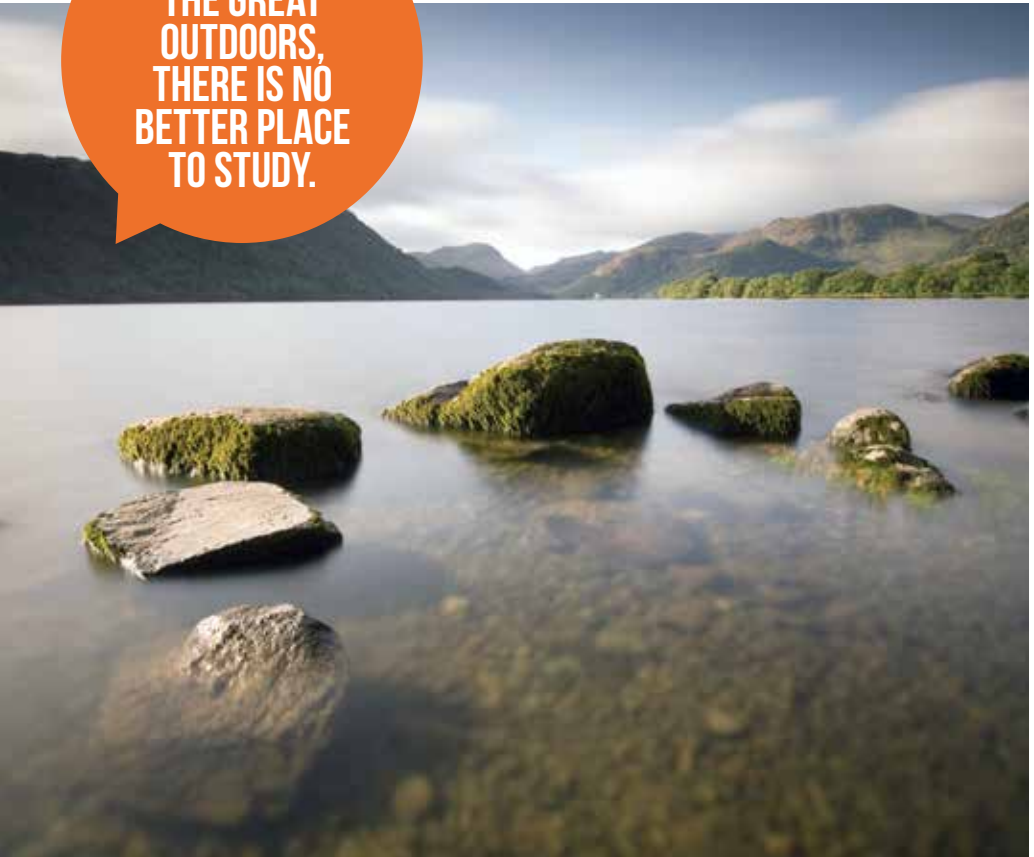
To book or for more information visit
www.cumbria.ac.uk/opendays

LOCATIONS

All our campuses and sites are great places to study. They all have their own special character, so here is a little more information to help you choose your place of study.

**IF YOU LOVE
THE GREAT
OUTDOORS,
THERE IS NO
BETTER PLACE
TO STUDY.**

Please note that not all courses are offered at all campuses and sites— please see pages 27-30 where we list our courses by location.



Above: Ullswater

WE ARE HERE ...

**Did you know?**

- Cumbria is home to England's highest mountain, Scafell Pike and deepest lake, Wastwater.
- The Lake District National Park welcomes 15.8 million visitors every year.
- The famous Stobart Group, the UK's largest haulage company, has its headquarters in Carlisle.
- The population is 495,000.

CARLISLE

Historic Carlisle is a good place to live and study. The city is just ten miles south of the border with Scotland and has fast links to the rest of the country via the M6 and West Coast Main Line railway. It's easy to get to Newcastle, Manchester, Glasgow and Edinburgh. The spacious heart of the city is particularly attractive with a cathedral, castle and an excellent array of shops and places to eat and drink. The Lake District is also only half an hour away and you can get to the coast in the same time.

The Lanes Shopping Centre, Carlisle



Our Fusehill Street campus is a 10-minute walk from the railway or bus station. It has a full range of facilities housed in a range of Victorian and modern buildings including Students' Union, library, 24/7 e-resources, halls of residence, sports centre, Learning Gateway building—a great informal space to study in—and on-site catering.

Brampton Road campus is home to our arts and related courses and is housed in a range of attractive buildings. Halls of residence are on site as is the library, 24/7 e-resources and excellent café with Costa coffee. The campus sits above the River Eden so it's easy to take a stroll along its banks for inspiration or just pleasure. The campus is a 20-minute walk from railway and bus stations.

Right: Calva Bar, Fusehill Street campus, Carlisle

The Carlisle Business Interaction Centre (CBIC) is based at Paternoster Row which is in the heart of the city centre. Surrounded by historic buildings and opposite the cathedral, the location is just a five-minute walk from the train station. All of our business courses are delivered here and the historic building boasts modern and up-to-date facilities, providing our students with excellent learning spaces and IT resources.



Did you know?

- Population 72,000.
- Hadrian's Wall ran through the city and well preserved parts of the structure can be visited nearby.
- Home to one of the smallest but most beautiful Gothic cathedrals in the UK.
- Impressive Carlisle Castle is over 900 years old and dominates western approaches to the city.
- Carlisle born and bred – Hollywood director Mike Figgis, acclaimed poet Jacob Polley and novelist Sarah Hall.

Don't miss

- Carlisle Music City – a week long music festival every June and September each year
- retail therapy – Carlisle is a regional shopping centre with all the big brands and local names to discover
- Roman legacy – lots to see of the city's Roman past. Tullie House is a good place to start
- step out – Hadrian's Wall Trail runs through the city whilst the Lake District is just 30 minutes away.

Find out more at
www.cumbria.ac.uk/refresh

LANCASTER

Students like Lancaster because it's a city with two universities. The big student population means it's a vibrant place with a flourishing arts and music scene. The city is compact, easy to get around and easy to get to. Our campus is a 20-minute walk from the centre and railway station and the city is just off the M6 Motorway.

Café Martineu,
Lancaster campus



The campus is located in our own grounds, and teaching and learning takes place in a nice mix of cutting-edge buildings and a range of older, traditional types. Facilities and services are extensive, with the library, e-resources available 24/7, a range of accommodation, a sports centre, all-weather sports pitches, the Students' Union and great food and drink at Café Martineau and The View—the latter with panoramic views of the city,

Morecambe Bay and the Lake District. Close to the campus is Williamson Park which is a perfect place to while-away a couple of hours on a fine day. Just out of the city is the Forest of Bowland, a fabulous place to walk and explore, and just a little north of the city is the beautiful Lake District National Park. Manchester, Liverpool and Leeds are easily reached and Lancaster is on the West Coast Main Line railway.



Above: The Gateway, Lancaster campus

Did you know?

- Population 45,000.
- One of the busiest ports in the country in the 19th century.
- The oldest standing building in Lancaster is the castle which dates back to the 13th century.
- Lancaster born and bred—Laurence Binyon, poet; William Whewell, polymath; Sir John Fleming, engineer and physicist.

Don't miss

- Dukes Theatre – cultural centre and theatre screening a wide range of films and own-produced and touring work
- on the water – see the city from a different angle from a canal barge on the Lancaster Canal
- hang out – at the Storey gallery, cafe and bookshop; perfect relaxation
- Williamson Park – 54 acres of beautiful parkland in the heart of the city
- rhythm and blues – or just about any other style of music to enjoy in the city's vibrant pub and club scene.

Find out more at
www.cumbria.ac.uk/refresh



Above:
Charlotte Mason building,
Ambleside campus

AMBLESIDE

Our Ambleside campus is right in the heart of the beautiful Lake District National Park—a top 50 world destination according to National Geographic Traveller Magazine. The campus is located on an elevated site and is currently home to a range of business and outdoor courses. You will find a modern range of study facilities, e-resources available 24/7 and a climbing wall.

If you love the great outdoors, there is no better place to study. You can be on the fells within minutes of leaving the campus or on the water quickly as Ambleside is on the shores of Windermere. The town is very pretty and welcomes lots of visitors as a result—so it's a bustling, good-natured place to live. The nearest railway station is at Windermere, five miles away and the town is serviced by regular bus services. Coming by car is straightforward with Ambleside about 30 minutes drive from J36 of the M6.

Did you know?

- Windermere is England's longest lake.
- Bridge House in Ambleside is one of the smallest houses in the country.
- The Struggle, a road leading out of Ambleside is one of the steepest roads in the country.
- Our campus used to be the site of Charlotte Mason College, a pioneering teacher-training institution.

Don't miss

- Zeffirellis, blockbuster and art house movies plus live jazz and restaurants
- The Golden Rule – a traditional pub, a favourite with climbers and walkers
- Lucy's on a Plate – the legendary Lake District café
- Ambleside Sports – a real flavour of the Lakes, Cumberland and Westmorland wrestling, guide races and more.



ENERGUS WORKINGTON

Our university facilities are housed in the state-of-the-art Energus building. They are excellent and include informal spaces for individual or collaborative study with a wide range of e-resources. The facility is open 24/7.



Energus building,
Workington



LONDON

Our London campus is located at East India Dock Road. Our facilities provide a modern well-equipped learning environment for the exclusive use of our students. There is a conservatory providing a catered social space and a lawned garden area with seating. The location is served by DLR Westferry nearby and bus routes with a bus stop directly outside.



Above and right:
East India Dock
Road site, London

PARTNER COLLEGES

The University of Cumbria works in collaboration with a number of regional, national and international partners. You either study by distance learning or on location at one of our partner colleges and your postgraduate qualification is validated by the University of Cumbria.

Furness College

The new University Centre at Furness College provides state-of-the-art facilities for all university students in the Furness area. As well as teaching space, the centre provides flexible study space, computing facilities and a core collection of library books.

Robert Kennedy College

With students from over 90 different countries, the college is a truly international establishment, offering Swiss quality education at a distance. Based in Zurich, Robert Kennedy College has tailor-made, software for online course delivery providing an interactive and easy-to-use system which makes online studying an enjoyable experience.

South Thames College

South Thames College London (STCL) has a long tradition of delivering top quality courses for international students. The college has a vibrant student body of over 20,000 students joining it each year, from all over the world. STCL provides high quality teaching and facilities combined with affordability and outstanding service. The campuses feature smart board technology, sports facilities, and learning resource centres.

DISTANCE LEARNING

Distance learning allows us to deliver your studies flexibly enabling you to study around family, social and work commitments. You may wish to work from home, in the office or at a place that suits you at any time.

The University of Cumbria uses Blackboard, a web-based Virtual Learning Environment (VLE). If you have been out of study for some time, or have any concerns regarding using IT, we are able to help you by providing study skills courses and support for learning.



ACCOMMODATION

Your room with a view

We will help you find the right type of accommodation when you join us as a postgraduate student. It's good value too, with rents typically much cheaper than in major cities.

Many postgraduate students choose to live off campus. We have an extensive roster of approved private landlords and we also manage a range of directly privately owned properties. It means that we have wide choice of styles of properties close to our campuses.

If you wish to live in halls on campus, we will try and accommodate you. Many of our rooms in halls have wide vistas to enjoy especially in Carlisle, Lancaster and Ambleside. All are very close to city and town centre and self-contained to promote a positive study and research environment. Please see www.cumbria.ac.uk/accommodation for more details.

Good value accommodation

The cost of university halls start from just over £80 per week in Carlisle, £54 in Lancaster and £82 in Ambleside. Private landlord rents start a little lower. Full details can be found at www.cumbria.ac.uk/accommodation

Summary of accommodation options

Carlisle – halls and private landlords
Lancaster – halls and private landlords
Ambleside – halls and private landlords
London – private landlords
Workington – private landlords

Full details of all the options can be found at www.cumbria.ac.uk/accommodation





OUR COURSES

KEY

AWARDS

Masters (MA/MBA/MSc)

Two to five years

MA Master of Arts

MBA Master of Business Administration

MSc Master of Science

- 180 academic credits of learning at level 7 including dissertation
- identified exit points at postgraduate certificate (60 credits) and postgraduate diploma (120 credits).

Postgraduate Certificate (PgC)

One to two years

- 60 credits of learning at level 7 offering professional development in defined areas of practice.

Postgraduate Diploma (PgD)

Two to four years

- 120 credits of learning at masters level offering professional development in defined areas of practice at level 7
- identified exit points at post-graduate certificate (60 credits).

Postgraduate Certificate in Education (PgCE)

Duration is variable depending on experience: from two months to two years

If you have already completed an honours degree, these courses give you the opportunity to train as a teacher. They also include credits of learning at level 7.

Professional Graduate Certificate in Education (PGCE)

Duration is variable depending on experience: from two months to two years

If you have already completed an honours degree, this course gives you the opportunity to train as a teacher for the 5-to-11 age range and includes credits of learning at level 6.

University Award (UA)

Six months to one year

Typically 40 credits of learning at level 4, level 5 or level 6 or at a combination of levels.

Distance Learning

Our distance, blended and flexible learning options gain the same amount of credits as their campus-based equivalent courses. Please see our website for more information www.cumbria.ac.uk/courses

MODES OF STUDY

F Full-time **P** Part-time **D** Distance **B** Blended **FI** Flexible and Distributed **W** Work-based

LOCATIONS

AM Ambleside

CF Carlisle, Fusehill Street

LO London

CBIC Carlisle Business Interaction Centre (CBIC)

EW Energus, Workington

ST South Thames College

CB Carlisle, Brampton Road

FC Furness College

SD School Direct

LA Lancaster

COURSE LISTING BY LOCATION

Ambleside	Award	Study
Development Training	MA, PgD	F P D B
Environmental Leadership	MA, PgC, PgD	F P B
Outdoor and Experiential Learning	MA, PgD	F P B
Sustainable Leadership (subject to validation)	PgC	F P B
Carlisle Business Interaction Centre (CBIC)	Award	Study
Business Administration	PgC, PgD	P D
Computing	PgC, PgD	P
Educational Management and Leadership	MBA	D
Events Leadership and Management	MBA	P
International Management	MSc	P D
International Marketing Management	MSc	P D
Leadership and Management in Policing	MBA	P D
Leadership in Health and Social Care	MBA	D
Master of Business Administration	MBA	P
Carlisle, Brampton Road	Award	Study
Contemporary Fine Art	MA	F P
Events Leadership and Management	MBA	F P
Carlisle, Fusehill Street	Award	Study
Academic Practice	MA, PgC, PgD	P D
Applied Social Sciences	MSc	F P
Education	MA	F P D
Exercise and Health	MSc, PgC, PgD	F P FI
General Primary with QTS (5-11 years)	PgCE	F
Higher Specialist Social Work (Mental Health Practice)	MA, PgD	P
Lower Primary with QTS (3-7 years)	PgCE	F
Mental Health Practice	MA, PgD	P
Non-medical Prescribing for Allied Health Professionals (Independent Prescribing)	UA	P
Non-medical Prescribing for Allied Health Professionals (Supplementary prescribing)	UA	P
Non-medical Prescribing for Nurses (V300)	UA	P
Non-medical Prescribing for Pharmacists	UA	P
Occupational Therapy (Pre-registration)	MSc	F
Practice Development	MSc, PgC, PgD	P
Practice Development: Acute and Critical Care	PgC	P D
Practice Development: Allied Health Enterprise Development	PgC	P
Practice Development: Diabetes Management	PgC	P D

Practice Development: Midwifery	PgC	P	D		
Practice Development: Sport and Disability	PgC	F	P	D	
Practice Development: Sport and Rehabilitation	PgC		P		
Social Work	MA	F			
Supervision of Counselling and Therapeutic Practice	PgC		P		

Energus, Workington	Award	Study
Nuclear Security Management	MSc	P

Furness College	Award	Study
Engineering	MSc, PgC, PgD	P

Lancaster	Award	Study
Academic Practice	MA, PgC, PgD	P D
Advanced Practice in Cognitive Behavioural Therapy	MSc, PgC	P
Business Administration	PgC, PgD	F D
Community Specialist Practice (Community Learning Disabilities Nursing)	PgD	F P
Community Specialist Practice (District Nursing)	PgD	F P
Community Specialist Practice (General Practice Nursing)	PgD	F P
Counselling and Psychotherapy	MA, PgD	P
Education	MA	F P D
Educational Management and Leadership	MBA	D
Events Leadership and Management	MBA	F
Evidence-based Psychological Approaches (Cognitive Behavioural Therapy)	PgC	P
Exercise and Health	MSc, PgC, PgD	F P FI
General Primary with QTS (5-11 years)	PgCE	F
General Primary with QTS - French specialism	PgCE	F
International Business	MBA	F
International Management	MSc	F
International Marketing Management	MSc	F
Leadership and Management in Policing	MBA	D
Leadership in Health and Social Care	MBA	D
Lower Primary with QTS (3-7 years)	PgCE	F
Management and Leadership in Health and Social Care	MSc, PgD, PgC	P D
Master of Business Administration	MBA	F
Medical Imaging: Magnetic Resonance	MSc, PgC, PgD	P
Medical Imaging: Ultrasound	MSc, PgC, PgD	P
Non-medical Prescribing for Allied Health Professionals (Independent Prescribing)	UA	P
Non-medical Prescribing for Allied Health Professionals (Supplementary prescribing)	UA	P
Non-medical Prescribing for Nurses (V300)	UA	P
Non-medical Prescribing for Pharmacists	UA	P
Nuclear Security Management	MSc	P
Practice Development	MSc, PgC, PgD	P
Practice Development: Acute and Critical Care	PgC	P D
Practice Development: Diabetes Management	PgC	P D
Practice Development: Long Term Conditions	PgC	P D
Practice Development: Midwifery	PgC	P D

Practice Development: Palliative Care	PgC		P	D			
Practice Development: Respiratory Care	PgC		P	D			
Practice Development: Sport and Disability	PgC	F	P	D			
Practice Development: Sport and Rehabilitation	PgC		P				
Primary (5 to 11 years) - Distributed Learning Programme	PGCE	F		D			
Public Health Practice (with global pathway)	MSc		P	D			
Secondary with QTS: Art and Design	PgCE	F					
Secondary with QTS: Computer Science and ICT	PgCE	F					
Secondary with QTS: Design and Technology	PgCE	F					
Secondary with QTS: English	PgCE	F					
Secondary with QTS: Geography	PgCE	F					
Secondary with QTS: History	PgCE	F					
Secondary with QTS: Mathematics	PgCE	F					
Secondary with QTS: Modern Foreign Languages (MFL)	PgCE	F					
Secondary with QTS: Music	PgCE	F					
Secondary with QTS: Physical Education	PgCE	F					
Secondary with QTS: Religious Education	PgCE	F					
Secondary with QTS: Science	PgCE	F					
Specialist Community Public Health Nursing (Health Visiting)	PgD	F	P				
Specialist Community Public Health Nursing (Occupational Health Nursing)	PgD	F	P				
Specialist Community Public Health Nursing (School Nursing)	PgD	F	P				
Supervision of Counselling and Therapeutic Practice	PgC		P				
Teaching English to Speakers of Other Languages (TESOL)	MA	F					
Working with Individuals on the Autism Spectrum	MSC, PgC, PgD		P				

London	Award	Study
General Primary with QTS (5-11 years)	PgCE	F
Secondary with QTS: Modern Foreign Languages (MFL)	PgCE	F

Robert Kennedy College	Award	Study
International Business Management	MA	D
Law (subject to validation)	LLM	D
Leadership and Sustainability	MBA	D
Master of Business Administration	MBA	D

School Direct	Award	Study
General Primary with QTS (5-11 years)	PgCE	F
Lower Primary with QTS (3-7 years)	PgCE	F
Secondary with QTS: Art and Design	PgCE	F
Secondary with QTS: Computer Science and ICT	PgCE	F
Secondary with QTS: Design and Technology	PgCE	F
Secondary with QTS: English	PgCE	F
Secondary with QTS: Geography	PgCE	F
Secondary with QTS: History	PgCE	F
Secondary with QTS: Mathematics	PgCE	F
Secondary with QTS: Modern Foreign Languages (MFL)	PgCE	F
Secondary with QTS: Music	PgCE	F
Secondary with QTS: Religious Education	PgCE	F
Secondary with QTS: Science	PgCE	F

South Thames College	Award	Study
Marketing	MA	F P
Master of Business Administration	MBA	F
Distance Learning	Award	Study
Academic Practice	MA, PgC, PgD	P D
Advanced Practice (Clinical)	MSC, PgC	D
Business Administration	PgC, PgD	F P D
Development Training	MA, PgD	F P D B
Education	MA	F P D
Educational Management and Leadership	MBA	D
International Business	MBA	D
International Business Management	MA	D
International Management	MSc	D
International Marketing Management	MSc	D
Law (subject to validation)	LLM	D
Leadership and Management in Policing	MBA	D
Leadership and Sustainability	MBA	D
Leadership in Health and Social Care	MBA	D
Management and Leadership in Health and Social Care	MSc, PgD, PgC	P D
Master of Business Administration (Robert Kennedy College)	MBA	D
National Award for SEN Coordination	PgC	D
Physiotherapy Studies (International) (subject to validation)	MSC, PgD	D
Practice Development: Acute and Critical Care	PgC	P D
Practice Development: Diabetes Management	PgC	P D
Practice Development: Enhancing Paramedic Practice	MSc	D
Practice Development: Long Term Conditions	PgC	P D
Practice Development: Midwifery	PgC	P D
Practice Development: Palliative Care	PgC	P D
Practice Development: Respiratory Care	PgC	P D
Practice Development: Sport and Disability	PgC	F P D
Primary (5 to 11 years) - Distributed Learning Programme	PGCE	F D
Public Health Practice (with global pathway)	MSc	P D
Blended Learning	Award	Study
Development Training	MA, PgD	F P D B
Environmental Leadership	MA, PgC, PgD	F P B
Outdoor and Experiential Learning	MA, PgD	F P B
School Leadership	MA, PgC, PgD	B FI
Sustainable Leadership (subject to validation)	PgC	F P B
Flexible and Distributed Learning	Award	Study
Exercise and Health	MSc, PgC, PgD	F P FI
Practical Theology	MA	FI
School Leadership	MA, PgC, PgD	B FI
Theology with Pathways in: Theology, Theology & Ministry and Theology and Religious Education		FI
Work-based Learning	Award	Study
National Professional Qualification for Headship (NPQH)	MA	W

COURSE LISTING BY COURSE AREA



32

ARTS



34

BUSINESS



39

EDUCATION



45

ENGINEERING



46

HEALTH



62

HUMANITIES



63

LAW AND SOCIAL SCIENCES



64

OUTDOORS



ARTS

MA Contemporary Fine Art

Mode of study:

F P

Location:

CB

This is a creative and intensive programme of self-directed study, encouraging interdisciplinary approaches to fine art practice. Studio-based, the course is conducted within a robust and lively context of critical discourse preparing you to identify and strengthen your position within the field of contemporary art.

Linda Fitzgerald

MA Contemporary Fine Art

After studying fine art as an undergraduate student, Linda wanted to further explore her creativity in a structured way and learn new skills whilst being intellectually challenged.

Linda says: "I chose to study at the University of Cumbria as it is a small, friendly place with great facilities. What I like most about the course is the support of the students and staff, the atmosphere of the studios and the challenges of my chosen discipline."

Linda found the programme challenging but continues: "I was able to develop a wide range of skills to create art work and exhibit in a variety of contexts. At postgraduate level, you are challenged to understand and develop your practice in much greater depth. It has given me the confidence to pursue my career and to continue the development of my practice. Without completing my MA, I would probably have been a little bit lost and, most certainly not as fulfilled as I am just now."

Her latest exhibition, *Style & Spirit* (2013), is the culmination of an 18-month project documenting the experiences of a Turkish refugee



"I chose to study at the University of Cumbria as it is a small, friendly place with great facilities. What I like most about the course is the support of the students and staff, the atmosphere of the studios and the challenges of my chosen discipline."

and her daughter. It is a multi-media installation of film, digital images and text. Linda is justly proud of this work and says: "It is the best work I have made to-date. The reason for this is because each of my chosen media has been pushed and developed in equal measure, I don't think that I have achieved this balance before I completed my MA."



BUSINESS

Mode of study:

F P D

Location:

CBIC LA

Mode of study:

P

Location:

CBIC

Mode of study:

D

Location:

CBIC LA

PgC/PgD

Business Administration

You will work as individuals and groups, and have the opportunity to apply theoretical concepts to real-life complex business case studies. We ensure that the learning process encompasses the current global economic climate and evolving management reasoning, practices and solutions.

PgC/PgD

Computing

Develop advanced computer skills, work through real-life projects using computer solutions and engage with a wide range of technologies designed for your future business success. For current teaching staff, the course provides you with the opportunity to update skills and knowledge that are essential to teach this subject in the future school curriculum.

MBA

Educational Management and Leadership

This programme is designed for those seeking senior leadership positions in schools. You are likely to be working in the sector so the course will support your development of skills in strategic leadership and management, HR management, financial management and forecasting and IT.

Mode of study:

F P

Location:

CBIC CB LA

Mode of study:

F

Location:

LA

Mode of study:

D

Location:

RK

Mode of study:

F P D

Location:

CBIC LA

MBA

Events Leadership and Management

We support the development of the essential skills in business planning, HR management, financial management and forecasting and IT, all of which are necessary to develop large international, smaller national or regional events as well as the operations of an events company. We place a high degree of emphasis on interactive learning and provide a supportive environment in which you can develop both academically and personally.

MBA

International Business

Our MBA is designed for today's business leaders and managers who want to gain a greater understanding of the world they work in. It focuses on international relations, business strategies sensitive to international issues and highlights diversity and multicultural concerns.

MA

International Business Management

The Master of Arts in International Business Management allows you to think and compete globally. Designed for your global success, this MA creates distinctive managers with a comprehensive knowledge of the latest business practices. We offer this programme in exclusive partnership with the Robert Kennedy College in Zurich, Switzerland.

MSc

International Management

This course will feed your passion for exploring international management literature, examining the relevance of management studies, and critically assessing how theory can be informed by the current economic climate. The world economy is no longer contained by national borders and the practice of management can vary widely. Intellectual and industry-informed debates will enhance your development and help prepare you for a career in the international marketplace.

Mode of study:

F P D

Location:

CBIC LA

Mode of study:

P D

Location:

CBIC LA

Mode of study:

D

Location:

RK

Mode of study:

D

Location:

CBIC LA

Mode of study:

F P

Location:

ST

MSc

International Marketing Management

Enhance your marketing knowledge to enable you to work for companies operating in more than one country. You will consider strategies of product, communication, distribution, and pricing in a range of different countries.

MBA

Leadership and Management in Policing

This course will provide you with a thorough understanding of strategic business skills to meet the challenging financial environment that policing services are subject to. This programme is aimed at those individuals who wish to realise their potential in securing senior leadership and management positions within the police service.

MBA

Leadership and Sustainability

Designed for tomorrow's leader, the MBA in Leadership and Sustainability creates distinctive managers with a unique leadership-oriented career opportunity. The MBA is the first in the world to focus on leadership and sustainability and is delivered in partnership with Robert Kennedy College.

MBA

Leadership in Health and Social Care

Develop your skills in business planning, HR management, financial management and forecasting and IT necessary to be a leader in health and social care settings across different national contexts. It is likely you will have worked in this sector and are seeking career progression or continual professional development opportunities.

MA

Marketing

You will learn practical skills to analyse, critically evaluate and apply a range of strategic marketing management concepts, tools and techniques. This will enable you to devise creative marketing solutions for organisations in dynamic business environments.

Sean Crooks

MBA

After studying radiography as an undergraduate at St Martin's College, one of our founding institutions, Sean soon progressed into management working for a private sector organisation. Wanting to start his own business convinced him that postgraduate study was a route he wished to pursue at the University of Cumbria.

Sean says: "I have progressed into management within a private organisation, and wanted to develop my commercial understanding and management skills in order to help me start my own business. Learning about business strategy during my first term was great. It's a topic I have always enjoyed discussing and the module helped me develop my knowledge.

"I am also motivated as I can see real value in the course I am undertaking. Starting my own business, will allow me to be independent, with the responsibility and freedom to go in any direction I want!"



"I am also motivated as I can see real value in the course I am undertaking."

Mode of study:

F P

Location:

CBIC LA ST

MBA**Master of Business Administration**

Our MBA provides a rigorous and challenging business and management education, where you will develop alongside other experienced managers and business professionals. It is a demanding but rewarding programme that will give you the skills and knowledge to progress your career to more senior levels or give you a stepping-stone to a new career.

Mode of study:

D

Location:

RK

MBA**Master of Business Administration
(Robert Kennedy College)**

For the majority of your studies you enjoy the flexibility of online learning at your own pace from anywhere in the world through the Robert Kennedy College Online Campus. This is complimented by a one-week compulsory summer residency at the University of Cumbria in Ambleside. With students from every continent, it will be a truly international experience and opportunity to network with fellow leaders from all over the world.

Mode of study:

F P B

Location:

AM

PgC**Sustainable Leadership**

Upon completion of this programme you will be able to evaluate your leadership approach and that of others. You will also be able to analyse the actions of leaders enabling social change. Studying case studies, participating in field visits and learning from visiting managers and guest speakers will enhance your learning.



EDUCATION

Mode of study:

P D

Location:

CF LA

Mode of study:

F P D

Location:

CF LA

MA, PgC, PgD Academic Practice

This course helps to extend your capability as an academic practitioner in both disciplinary scholarship and research, and leadership skills within a constantly changing and challenging learning environment. With an advanced knowledge of academic practice, you will be well placed for pursuing promoted posts in Higher Education institutions. You may also choose to undertake a PhD or professional doctorate.

MA Education

This programme is designed to support you in reaching the highest standard of scholarship, critical thinking and practical action. We will support you in completing work-based projects so that there is synergy between your day-to-day work and the additional work required to gain the award.

Mode of study:

F

Location:

CF LA LO SD

PgCE

General Primary with QTS (5-11 years)

This course is particularly successful at preparing teachers who are reflective, skilful, knowledgeable and caring. You will have the opportunity to spend over half of the course working with children. This will include 48 days at university and 120 days on placement so that you will have a wealth of diverse classroom experience to take with you as you embark on your career as a primary or Key Stage 1 teacher.

PgCE

General Primary with QTS— French specialism

Mode of study:

F

Location:

LA

You will learn the knowledge and skills needed to be an effective teacher; you develop as an independent learner and you nurture the beliefs, values and self-motivation that you will need throughout your career. You will have the opportunity to spend over half of the course working with children as you will experience four placements in a variety of schools and settings.

School Direct

School Direct gives you the opportunity to be recruited to a course jointly by the school and university with the expectation that there will be a teaching position within one of the schools in which you train on completion of the course. The course consists of the same content, assessments and high quality training wherever it is delivered, however, the mode and location of study will vary.

You will study for a one-year University of Cumbria postgraduate certificate of Education (PGCE) at masters level, leading to qualified teacher status (QTS) which enables you to commence a teaching career. The significant majority of training occurs within school. All of our School Direct courses follow the PGCE at masters level which includes qualified teacher status (QTS).

Mohammed Dawood

PgCE General Primary

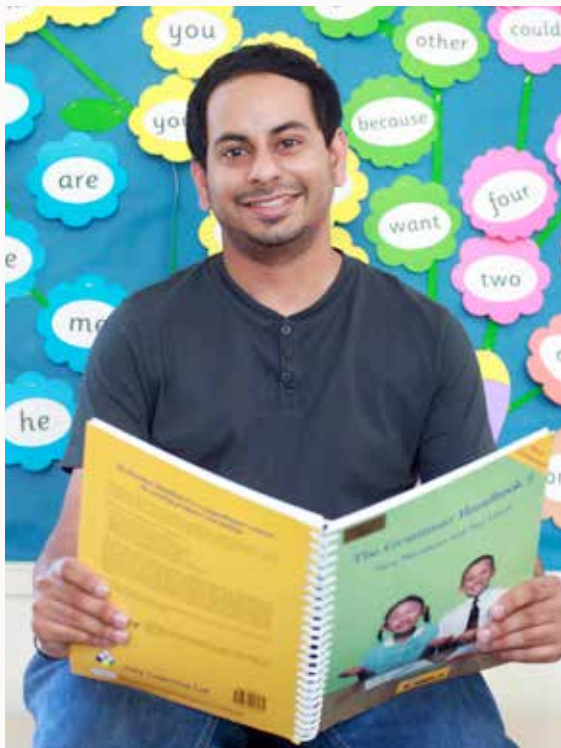
Having worked previously within the law profession, Mohammed is determined to bring his own experiences into his new career and become the best he can.

"I came into teaching as a result of a career change and postgraduate study represented a major change in lifestyle for me ... it has developed my practice as a reflective practitioner, raised my awareness of teaching developments and frankly, enabled me to become a great teacher and to strive to become an even better teacher!

"I was able to appreciate the benefits of teaching a lot more having come to it from a different vocation. There is no value that can be attached to the pleasure of facilitating a child's learning."

Mohammed has worked hard, however he is aware of the rewards and the help he has received.

He continues: "I feel that I have surpassed my ambitions as I was awarded an outstanding trainee teacher grade during my final block placement and secured a teaching post at the same school. It was a challenging year at times but the support of family, friend, colleagues and tutors pulled me through."



"I came into teaching as a result of a career change and postgraduate study represented a major change in lifestyle for me."



Mode of study:

F

Location:

CF LA SD

Mode of study:

D

PgCE

Lower Primary with QTS (3-7 years)

All modules develop your knowledge and understanding of the three to seven age range. They cover child development, the statutory framework for the Early Years Foundation Stage and the National Curriculum at Key Stage 1. Other parts of the course involve reflection on and analysis of children as learners, cross-curricular learning and teaching, and innovative teaching approaches. The clearly defined academic and professional elements of the course interact with each other so you become an excellent classroom practitioner.

PgC

National Award for SEN Coordination

The purpose of this course is to enable you to enhance provision and outcomes for all children, especially those with special educational needs and/or disability. Our programme aims to provide a structured opportunity to widen knowledge and understanding of key issues, to develop and practise skills, and to reflect on the values and attitudes which will support you in your work.

This award is now required of all teachers who are new to the role of a SENCO.

Mode of study:

W

COURSE SUBJECT
TO VALIDATION

Mode of study:

F D

Location:

LA

Mode of study:

B FI

MA

National Professional Qualification for Headship (NPQH)

This is the first choice qualification for aspirant headteachers or principals. Designed in collaboration with some of the country's leading headteachers and academics, NPQH will develop talented leaders from all backgrounds who can deliver educational excellence in a self-improving system with high quality outcomes for pupils and students.

PGCE

Primary (5 to 11 years) Distributed Learning Programme

This course provides a distributed learning approach for graduates who wish to train as teachers for the 5 to 11 age range and who live in the north of England. The course offers a variety of learning opportunities including face-to-face sessions, online study, independent learning, and learning groups.

MA, PgC, PgD

School Leadership

We will develop your knowledge, skills and expertise so that you will become a critically aware and confident school leader. You will develop and deploy enhanced skills in critical reflection and analysis of leadership behaviours, techniques and policies.



Mode of study:

F

Location:

LA SD

*MFL also
delivered from
London

PgCE**Secondary with QTS:**

- Art and Design
- Computer Science and ICT
- Design and Technology
- English
- Geography
- History
- Mathematics
- Modern Foreign Languages (MFL)*
- Music
- Physical Education (Lancaster only)
- Religious Education
- Science

If you want to embark on a fulfilling career as a school teacher in your specialist subject, then the PgCE is for you.

You will learn all the skills you need to teach effectively, from the basics of structuring and planning lessons, through to developing personal skills and confidence.

The courses blend university sessions with school placements and are founded on the principle of helping trainees to reflect and build upon the connections between university and school experiences. It means that the end of your course, you will be really well prepared for your career.

As all of our PgCE courses come with qualified teacher status built in, you will be qualified to work in schools upon graduation.

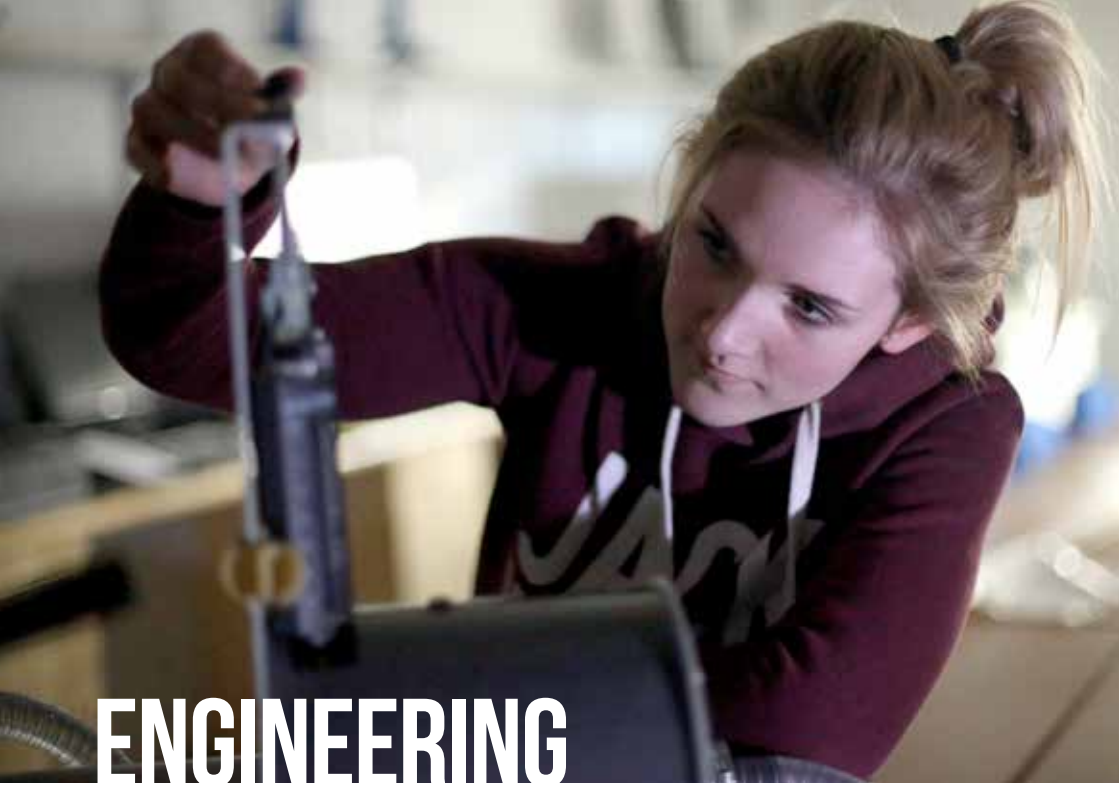
MA**Teaching English to Speakers of Other Languages (TESOL)****Mode of study:**

F

Location:

LA

If you are a graduate and are interested in teaching English to speakers of other languages, but have done little or no teaching, this course is for you. We will engage you in the academic and professional study of TESOL so that you emerge qualified to enter this sector.



ENGINEERING

Mode of study:

P

Location:

FC

MSc, PgC, PgD Engineering

This programme will support you in becoming a Chartered Engineer (CEng) and will place you at an advantage in this sector. Practical learning in first-class laboratories and workshops reinforces key theories and concepts you will learn in the classroom, developing your skills and capabilities attractive to employers locally, nationally and internationally.



HEALTH

Mode of study:

D

MSc, PgC

Advanced Practice (Clinical)

The programme has been developed to facilitate the development of knowledge and skills in the following areas: health assessment, diagnostic reasoning, clinical decision-making, leadership and the adoption and evaluation of evidence-based practice. For nurses, the MSc Advanced Practice Clinical is accredited by the Royal College of Nursing.

Mode of study:

P

MSc, PgC

Advanced Practice in Cognitive Behavioural Therapy

This postgraduate programme prepares you to meet professional standards, seek accreditation by the British Association for Behavioural and Cognitive Psychotherapies (BABCP) and become practitioners who are able to act as a specialist resource in keeping with employers' clinical governance targets and benchmarks.

Location:

LA

Mode of study:



Location:



PgD

Community Specialist Practice (Community Learning Disabilities Nursing)

You will have the opportunity and be encouraged to think, read and write critically about contemporary issues around community learning disabilities nursing and how research can influence innovative practice. By combining theory you have learned at university and the skills you have developed within practice, you will be successful in qualifying as a specialist practitioner. Successful completion entitles you to record your qualification with the NMC.

Mode of study:



Location:



PgD

Community Specialist Practice (District Nursing)

You will have the opportunity and be encouraged to think, read and write critically around contemporary issues around district nursing and how research can influence innovative practice. By combining the theory you have learned within university and the skills you have developed within practice you will be successful in qualifying as a specialist practitioner. Successful completion entitles you to record your qualification with the NMC.

Mode of study:



Location:



PgD

Community Specialist Practice (General Practice Nursing)

This course will prepare you for the role of Community Specialist Practitioner within general practice nursing. Successful completion entitles you to record your qualification with the NMC. Modules you will study include Appraising Research and Evidence for Service Improvement, Public Health Nursing Practice and Leadership.

Mode of study:

P

Location:

LA

MA, PgD**Counselling and Psychotherapy**

This course has a person-centred core content but also provides the opportunity to learn about and critically evaluate other approaches such as Cognitive Behaviour Therapy (CBT), solution focused and systemic ways of working. There will be emphasis on developing your research skills and your understanding of evidence-based practice.

Mode of study:

P

Location:

LA

PgC**Evidence-based Psychological Approaches (Cognitive Behavioural Therapy)**

This award is suitable for practitioners who are involved in the delivery of health and social care/psychologically focused interventions across a range of disciplines, roles and service areas. Modules include fundamentals of Cognitive Behaviour Therapy (CBT), CBT for anxiety and CBT for depression.

Mode of study:

F P FI

Location:

CF LA

MSc, PgC, PgD**Exercise and Health**

If you are working in the health or exercise industry, this course will develop your critical understanding of the multidisciplinary nature of issues surrounding exercise prescription, diet, adherence, policy and cultural aspects of exercise and health. We will help you to assess how using exercise, diet and behaviour modification as treatment tools can work.

Mode of study:

P

Location:

CF

MA, PgD**Higher Specialist Social Work (Mental Health Practice)**

This is an innovative post qualifying award for social workers incorporating professional development training for the new statutory competency-based awards of Approved Mental Health Professional (AMHP). You will learn reflective understanding and application of the concepts, values, theories and knowledge base underpinning your specialist area of mental health practice in order to promote effective engagement with service users and carers.



MSc, PgC, PgD Management and Leadership in Health and Social Care

Mode of study:

P D

Location:

LA

This programme provides you with opportunities to critically review, consolidate and extend an advanced body of knowledge, and application of a range of management and leadership theories and skills in order to enhance the service provided to your users.

MSc, PgC, PgD Medical Imaging: Magnetic Resonance

Mode of study:

P

Location:

LA

A masters level qualification in MR is becoming a requirement in many departments and this programme enhances employability as an MRI radiographer. Upon completion of the programme you will be able to demonstrate mastery in judgement and problem-solving skills necessary to produce the highest quality diagnostic medical images using a variety of magnetic resonance technology systems.

Mode of study:

P

Location:

LA

Mode of study:

P

Location:

CF

COURSE SUBJECT
TO VALIDATION**Mode of study:**

P

Location:

CF LA

Mode of study:

P

Location:

CF LA

MSc, PgC, PgD**Medical Imaging: Ultrasound**

This course prepares you for the next stage in your career and improves your employability by developing your understanding and clinical expertise in the theory and application of ultrasonography in medical imaging. It allows you to evaluate, research, analyse and synthesise data, and to research a specialised area. It is accredited by the Consortium for the Accreditation of Sonographic Education (CASE).

MA, PgD**Mental Health Practice**

This programme provides you with the opportunity to apply the key skills of Best Interest Assessor (BIA) as determined by the Department of Health. Continual development of your own and others' practice through systematic critical reflection and self-evaluation are key outcomes from this course.

UA**Non-medical Prescribing for Allied Health Professionals (Independent Prescribing)**

This multi-professional, flexible, course prepares allied health professionals designated by law for their roles as non-medical prescribers. Successful completion of the course allows you to seek to have your qualification recorded by your professional body, the Health Professions Council.

UA**Non-medical Prescribing for Allied Health Professionals (Supplementary prescribing)**

This course prepares physiotherapists and podiatrists designated by law for their roles as supplementary prescribers. Successful completion of the course allows you to seek to have your qualification recorded by your professional body, the Health and Care Professions Council.

Stephanie Wilson

MSc Image Interpretation*

After completing her undergraduate study with the university, Stephanie decided it was the place to continue her education in order to further her practice.

Radiography courses are vocational, interesting and dynamic giving multiple career opportunities. The increasing demand required within the NHS has led to a whole new range of exciting career development opportunities with advancing practice becoming increasingly popular.

Stephanie endorses this and says: "The course allowed us to build friendships, not only professionally but academically, creating life-long contacts. The balance of academia and clinical work was both efficient and practical. Varying assessment methods, with a large focus on clinical practice and portfolio development, created a very transferable skill into the chosen advanced practice."

However, Stephanie also found a whole new career opening up for her.

"My life has changed dramatically. My new qualification meant I was able to apply for a new advanced role at the hospital, widening my professional



"Varying assessment methods, with a large focus on clinical practice and portfolio development, created a very transferable skill into the chosen advanced practice."

horizons greatly. This in turn led to a part-time lecturing role," says Stephanie.

"I love my new role—the course was definitely the right career and personal decision."

*This course is now MSc Medical Imaging: Magnetic Resonance or Ultrasound

Mode of study:

P

Location:

CF LA

UA

Non-medical Prescribing for Nurses (V300)

This course prepares nurses, midwives and health visitors designated by law for their roles as non-medical prescribers. Successful completion of the course allows you to seek to have your qualification recorded by your professional body, the Nursing and Midwifery Council.

Mode of study:

P

Location:

CF LA

UA

Non-medical Prescribing for Pharmacists

This course will prepare you as a pharmacist designated by law for your role as a non-medical prescriber and is fully accredited by the General Pharmaceutical Council. Modules include consultation skills for pharmacists and principles of prescribing practice in the context of pharmacists.

Mode of study:

P

Location:

LA EW

MSc

Nuclear Security Management

Develop the skills you need to be recognised as a professional in nuclear security management. This course is designed for staff in the nuclear sector, regulators and other relevant industries.

This vocational degree is designed to focus on producing nuclear security professionals who have mastered the science, art and engineering of effective nuclear security management and have gained practical skills for use in their workplace.

Mode of study:

F

Location:

CF

MSc

Occupational Therapy (Pre-registration)

With the MSc you are eligible for membership of the College of Occupational Therapists and registration with the Health and Care Professions Council. This is an exciting time for the profession with expansion of its role and opportunities to lead new developments. You develop your problem-solving abilities and are encouraged to use skills of critical analysis and clinical reasoning to integrate the theory of occupational therapy to its practice contexts.

COURSE SUBJECT
TO VALIDATION

Mode of study:

D

Mode of study:

P

Location:

CF | LA

MSc, PgD

Physiotherapy Studies (International)

This course is aimed at international qualified physiotherapists who are looking to increase their career prospects with a UK qualification. There will be a strong focus on what it means to be a professional, with regards to accountability and responsibility, research and evidence-based practice.

MSc, PgD, PgC

Practice Development

This course is for those who wish to advance their academic and professional development through gaining mastery of complex and specialised knowledge and a critical awareness of issues at the forefront of their field of practice. A particular feature of the programme is the opportunity it provides for you to define your own pathway title for your target award, further enabling the award to reflect individual and employer choice.





Mode of study:

P D

Location:

CF LA

PgC

Practice Development: Acute and Critical Care

We have designed this award for individuals who work with clients in an acute and critical care setting and wish to enhance and develop their clinical and academic skills. The range of modules will allow you to tailor your choice to your workplace needs.

Mode of study:

P

Location:

CF

PgC

Practice Development: Allied Health Enterprise Development

This award will prepare you to work effectively in a health care sector that will become increasingly competitive and market driven. It will equip you with the skills and knowledge to make your mark.

Mode of study:

P D

Location:

CF LA

PgC

Practice Development: Diabetes Management

This award will equip you with the knowledge and skills required for effective care and management of people with diabetes. Modules include the management of both Type 1 and 2 diabetes and management of Insulin initiation.

Mode of study:

D

MSc

Practice Development: Enhancing Paramedic Practice

This course has been designed in collaboration with the North West Ambulance Service to meet the needs of students working as paramedics who wish to pursue work at a more senior level. We understand the demands that shift work presents so this course embraces e-learning technologies allowing you to study through distance and work-based learning.

Mode of study:

P D

Location:

LA

PgC

Practice Development: Long Term Conditions

If you are a practitioner involved in the care and case management of people with long-term conditions and wish to enhance your practice through the provision of expert, evidence-based care, support and interventions to individuals and families with the most complex needs, this award is for you. Optional modules include asthma management, Chronic Obstructive Pulmonary Disease (COPD) diagnosis and management and palliative care practice.

Mode of study:

P D

Location:

CF LA

PgC

Practice Development: Midwifery

Studying this award will equip you with the knowledge and skills required for evidence-based care and the provision of expert midwifery practice. You study three modules and choices include normality for child bearing, perinatal mental health and infant nutrition.

Mode of study:

P D

Location:

LA

PgC

Practice Development: Palliative Care

This award is for practitioners working with people with palliative care needs, and their families/carers, who wish to enhance and develop their clinical and academic skills. Modules include palliative care practice and pain and symptom management in palliative care.

Mode of study:

P D

Location:

LA

PgC

Practice Development: Respiratory Care

We will equip you with the knowledge and skills to provide expert, evidence-based care, support and interventions to individuals requiring respiratory care. Several modules are offered which include respiratory health assessment, asthma management and Chronic Obstructive Pulmonary Disease (COPD): diagnosis and management.

Mode of study:



Location:



Mode of study:



Location:



Mode of study:



Location:



PgC

Practice Development: Sport and Disability

This stimulating programme builds on your past learning experiences and is invaluable if you are looking to advance your academic and professional development. You will be able to develop a specialist knowledge and a critical awareness of issues at the forefront of your field of practice. This will be particularly relevant to sports graduates, therapists, teachers and coaches.

MSc, PgC, PgD

Practice Development: Sport and Rehabilitation

We will develop your critical understanding of the multidisciplinary nature of the issues surrounding exercise prescription, sport rehabilitation and exercise rehabilitation. You will develop competencies in methods of scientific enquiry, critical interpretation, analysis and evaluation of data and use of appropriate technologies and techniques in relation to health and exercise.

MSc

Public Health Practice (with global health pathways)

This course gives you the knowledge and skills you need to work in this exciting field. Because of the health improvement agenda and the demands of public health, in the UK and worldwide, health organisations, and other public, private and voluntary bodies have difficult decisions to make. The course responds to changing social circumstances, environments and policy priorities.

Mode of study:

F

Location:

CF

MA Social Work

This programme has been designed to enable you to meet the requirements of the Health and Care Professions Council which is the regulatory body and to join The College of Social Work the professional body and become a social worker. You will practice critically helping individuals, families and groups by sharing insight. We produce graduates who have a critical awareness of the nature of social problems, who practice in a disciplined way and take responsibility for their own professional development.

Mode of study:

F P

Location:

LA

PgD Specialist Community Public Health Nursing (Health Visiting)

This course will develop your specialist knowledge and skills in relation to public health, evidence-based practice, leadership, collaborative working and change management. The course is supported by local trusts, and comprises 50% practice-based learning and 50% theory. Successful completion entitles you to register your qualification with the NMC.

Mode of study:

F P

Location:

LA

PgD Specialist Community Public Health Nursing (Occupational Health Nursing)

The course will facilitate development of broad knowledge and skills in relation to occupational health, safety, public health, evidence-based practice, occupational health law and ethics, leadership and change and collaborative working. It will also develop specialist knowledge and skills in aspects such as risk assessment, ergonomics, health assessment and case management. Successful completion entitles you to register your qualification with the NMC.

Claire Feeney

MA Social Work

Wishing to embark upon a new career in a field that she is enthusiastic about, was the reason behind Claire studying at postgraduate level.

"I chose the MA in Social Work as I wanted to complete a higher level degree course in a subject that I feel passionate about and begin a career in social work.

"I like how the course is really varied in its content and I have benefitted from hearing many outside speakers who are experts in their own field. I am enjoying developing my own skills as well as learning new ones. I also really like benefitting from good tutor support and the social aspect of the course has been great, I have made some fantastic new friends!"

Studying at postgraduate level can be challenging but as equally rewarding.

Claire goes on to say: "At MA level, the focus of study is very much about critical analysis and critical thinking, and a more in-depth and broader use of sources is required. I hope to start a career as a social worker at the end of completing the course. This course is forming the basis of my future career and will affect me for the rest of my working life."



"I like how the course is really varied in its content and I have benefitted from hearing many outside speakers who are experts in their own field."



Mode of study:

F P

Location:

LA

PgD

Specialist Community Public Health Nursing (School Nursing)

The course will facilitate development of broad knowledge and skills in relation to public health, evidence-based practice, leadership, change management and collaborative working. On successful completion of the course, you will be eligible to apply to be registered on the NMC Nursing register in your named pathway of sexual health advising.

Mode of study:

P

Location:

CF LA

PgC

Supervision of Counselling and Therapeutic Practice

We provide you with a firm grounding in the principles and practice of counselling supervision at postgraduate level. This course will not only aid you in your practice, but enhance your vocational skills as training to supervise other therapists is an attractive career progression for many professionals.

Mode of study:

P

Location:

LA

MSc, PgC, PgD

Working with Individuals on the Autism Spectrum

We will develop your knowledge and skills which will increase understanding of the disorders, and facilitate effective working patterns between professionals, carers, individuals and families.

The course will be of relevance to anyone working directly or indirectly with people on the Autism Spectrum including parents, health professionals, support staff, those working in education and social services.



HUMANITIES

Mode of study:

FI

MA

Practical Theology

This programme will help you as you continue in your life-long learning and continuing professional development (CPD) for public ministry. You will demonstrate your growth and understanding as a reflective practitioner as you draw upon your ministerial experiences which provide the framework for your learning.

Mode of study:

FI

MA

Theology (with Pathways in: Theology, Theology and Ministry and Theology and Religious Education)

This new MA will be delivered online and learning will be enriched through tutorials, seminars, workshops and lectures. It will provide excellent and accessible learning for a higher degree/award and lifelong learning in the field of theology. There are three discreet pathways which draw on the wide range of expertise of our highly experienced Theology team. This will enable you to extend your learning and/or professional development in your chosen field of study or in your own context of work whether in the church, in schools or other in walks of life.



LAW AND SOCIAL SCIENCES

Mode of study:

F P

Location:

CF

COURSE SUBJECT TO VALIDATION

Mode of study:

D

Location:

RK

MSc

Applied Social Sciences

The programme will provide a stimulating and challenging academic and scholarly environment if you wish to advance your academic and professional development beyond undergraduate level, through developing specialised knowledge and a critical awareness of issues at the forefront of your field of practice within this area.

LLM

Law

This is an internationally recognised postgraduate qualification for those working in business wishing to increase their legal knowledge. Modules cover subjects such as international employment, tax and human rights law. If your background is in law, this course will set you apart from other candidates in the field, however we have tailored it to suit students from various business backgrounds.



OUTDOORS

Mode of study:

F P D B

Location:

AM

MA, PgD

Development Training

Development training is now a widely-used term for experiential approaches to personal, social and organisational development, typically through outdoor activities. You will learn through experience as part of a learning community. You build up your skills and knowledge, enhance and broaden your practice, and develop a critical understanding of the processes in context.

Vicki Stewart

MA Development Training

Reputation and location were important to Vicki when it came to choosing where to study.

“The reputation of the university as a centre for outdoor learning and the location of the campus in Ambleside in the centre of the Lake District, a stone’s throw from lakes and mountains helped me choose,” Vicki says.

Based in Wiltshire, Vicki studied via distance learning enabling her to continue developing her own successful business in development training, outdoor learning and forest school. However, the residential part of the course was important to her.

“My favourite things about the course were the unforgettable group learning experiences; on a lake, on a mountain side, in a storm as well as the fantastic facilitation from the tutors and guest lecturers which completely transformed my practice as a trainer.”

Vicki’s business is thriving. Looking to the future she would like to work in higher education, which she says would be out of reach without this qualification.

“The course has qualified me for my career aspirations and has transformed my practice—I enjoyed the journey of transformation!”



“My favourite things about the course were the unforgettable group learning experiences; on a lake, on a mountain side, in a storm as well as the fantastic facilitation from the tutors and guest lecturers which completely transformed my practice as a trainer.”



MA, PgC, PgD
Environmental Leadership

Mode of study:

F P B

Location:

AM

This is an exciting course designed to meet the needs of leaders in the outdoors and/or environmental organisations. It will optimise the potential of outdoor practice in raising awareness of environmental understanding to individuals, groups and managers. You will also look at ways of using the outdoors to debate environmental values and issues, to connect participants with the natural world and harness the inspirational potential of experiences to encourage a shift towards more sustainable ways of living and working.



MA, PgD

Outdoor and Experiential Learning

Mode of study:

F P B

Location:

AM

This course will help you apply innovative strategies in outdoor practice and to integrate them into other spheres of teaching and learning. You will approach learning through experience, utilising the outdoor environment and enabling you to apply new thinking to your practice. It is designed for those wishing to broaden their understanding of outdoor experiential learning and provides options for those who wish to specialise in the environmental or adventure aspects of learning.

YOUR QUESTIONS ANSWERED



Q What are taught degrees?

A Taught degrees as their name suggests involve a mix of formal lectures, tutorials and individual research to produce a dissertation in an area of specialism of your choice. Assessment is by examination and coursework.

Q What are research degrees?

A Research degrees involve undertaking an in-depth research project usually on a single topic. There are usually taught elements focusing on research methods.

Q How long do they take?

A Taught programmes are usually one year full-time and two years part-time. Research degrees can take four years full-time and five to seven years part-time.

Q Are there distance learning options?

A Please see our course listing on pages 26–30 where those courses offered by distance learning are shown.

Q What are the costs involved?

A Our postgraduate programmes are very good value for money. Please see www.cumbria.ac.uk/finance for the full details.

HOW DO I FIND OUT MORE?

Attend an open evening where all your questions will be answered. See page 13 for details

RESEARCH DEGREES

What is a research degree?

There are two research degrees: Doctor of Philosophy (PhD) and Master of Philosophy (MPhil). Both these higher degrees are awarded on the basis of a thesis, which embodies the results of your research, the MPhil thesis containing evidence of originality in scholarship and the PhD thesis being a longer work containing an original contribution to knowledge.

Research degree study has to be an original investigation with the aim of increasing knowledge and understanding of the selected topic. The Higher Education Funding Council for England state that research also includes “work of direct relevance to the needs of commerce and industry, as well as to the public and voluntary sectors; scholarship; the invention and generation of ideas, images, performances and artefacts, including design, where these lead to new or substantially improved insights; and the use of existing knowledge in experimental development to produce new or substantially improved materials, devices, products and processes, including design and construction.”



How does a research degree differ from a taught degree?

A research degree is very different because as a research student you work independently on your research. There are generally no formal lectures to attend or modules to complete but you will be supported by a team of supervisors who have direct knowledge of the subject area. The degree is awarded following an examination of the completed thesis by two independent examiners which includes a viva voce examination with the candidate.

How big is the University of Cumbria research community?

We have over 70 research degree students from the UK and other EU countries and overseas.

How does learning take place on a research degree?

We operate a system of team supervision for research students. You will be allocated a main supervisor, who provides the majority of support and regular contact. The main supervisor is normally an experienced researcher holding a PhD, or a senior academic with substantial knowledge of research methods. The supervisory team will normally contain at least one, but usually two, other members whose research areas are relevant to the student's thesis. You will meet with your supervisory team periodically to discuss progress to-date. As well as structuring expectations of progress,

this system allows you to draw on the specialist knowledge of a range of tutors. The main supervisor oversees research and generic skills acquisition and development following national frameworks and informed by current national agendas such as employability. Tutors who can supervise proposed research topics within PhD and MPhil research degrees will be found within the broad areas listed in our fields of study.

FOR MORE INFORMATION

Please visit
www.cumbria.ac.uk/graduateschool



It is important to note that a PhD achieved by independent research is very different from a masters course in that you will be required, as is usual in the sector, to work largely to your own timetable with restricted input from the main supervisor or supervisory team. As a general indication, contact time with main supervisors equates to one hour every two weeks for a full-time student and one hour every four weeks for a part-time student.

The types of research degree we offer

At first, you are registered as a probationary PhD candidate whose registration is subject to confirmation after an in-depth review when the work is well underway. Alternatively you can register for an MPhil, with the option of transferring to PhD, subject to individual wish and after a rigorous review.

How much time will I need to commit?

For a full-time PhD you should aim to spend at least 25 hours a week on your studies and 14 hours a week as a part-time student. The normal time to completion for full-time is around four years and for part-time, according to individual circumstances, from five to seven years.

What are the start dates?

1 October, 1 January and 1 April annually.

Funding support

Three fully funded PhD studentships are offered each year (subject to confirmation) and these include tuition fees, a tax-free stipendiary, and up to £500 fieldwork expenses. There are currently no studentships specifically for overseas applicants. From time-to-time there are some opportunities for teaching.

Details of the award

Upon successful completion of your thesis and examination you will receive a Lancaster University PhD or an MPhil. Lancaster University is the validating institution for the University of Cumbria's research programmes. Lancaster University is rated as one of the top ten universities in the UK.

Fields of study

Below are lists of just some of our areas of research expertise. It is not exhaustive and if your area of interest is not listed, please contact our Graduate School on 01524 384175 or

sonia.barnes@cumbria.ac.uk

- Applied social science
- Art
- Business studies
- Civil society
- Collaborative consumption
- Community development
- Conservation biology
- Corporate social responsibility
- Creative writing
- Cultural analysis
- Development education
- Digital technology (media, multimedia, e-learning, graphic design)
- Ecology (behavioural, population, landscape)
- Forestry
- Heritage landscape and environmental arts
- Leadership
- Microgrid
- Offshore renewables
- Outdoor education
- Regional economic development
- Religious studies
- Renewable energy technologies
- Silviculture
- Social movements
- Sustainable engineering
- Sustainable pest management

We are able to offer doctoral supervision for educational research in the following broad areas which span from early years through primary, secondary, further and higher education:

- Academic standards and quality assurance in higher education
- Assessment and feedback in Higher Education
- Child-centred research
- Children and teacher awareness of race
- Church schools
- Creativity in education
- Curriculum development
- Educational technology
- Evaluation and generating knowledge in a wide range of professional contexts
- Geographical education
- Gifted and talented
- Higher education strategy
- Identity
- Mathematics education
- Mindset theory
- Modern foreign languages education
- Musical inspiration and spirituality
- Phenomenographical research
- Philosophy for children
- Religious studies
- School leadership and improvement
- Teacher education and professional development
- Teachers and diversity
- Widening participation in higher education



Health research is broadly focused around six themes: medical imaging, nursing, occupational therapy and physiotherapy, health promotion, mental health and sport.

- Health policy
- Health practice
- Health promotion
- Health studies and healing science
- Imaging sciences
- Medical sciences
- Mental health
- Nursing and midwifery
- Occupational therapy
- Physiotherapy
- Psychology
- Public health and primary care
- Radiography
- Social work
- Sports coaching
- Sports development
- Sports performance



The University of Cumbria research community

Although you will work independently, supported by regular contact with supervisory team members, you can work alongside other research students in the Graduate School. Graduate School facilities are established on some of our campuses and include individual study space, storage areas and access to computer and IT equipment.

The Director of Research and Graduate Studies arranges early evening, generic research-support sessions for research students and supervisors. These take place once a month in Carlisle and Lancaster.

There is a two-week Research Degree Summer School in July each year. This provides a focus for research skills training and there is an expectation that postgraduate research students will attend these events. You may also follow (all or part of) an appropriate MA/MSc course at the University of Cumbria.

The Cumbria Research and Enterprise conference is an opportunity for all researchers, students and research-active staff alike to present their current research findings, and share experiences and ideas. It offers you a chance to develop the presentational skills needed for conferences and learned societies in front of a supportive home audience, at the same time making contact with the wider university research and enterprise community.

In addition, the annual Doctoral Colloquium forms part of the PhD Summer School and is intended to be a less formal forum for those who are presenting for the first time or whose work is still very much at the developmental stage.

What qualifications do I need to get onto the programme?

You need a good university honours degree of a recognised university. Some experience of research, research training or reflective professional practice is normally expected. An MA, MSc or equivalent is desirable but not essential. An interview will be required.

How to apply

Download an application from www.cumbria.ac.uk/phdresearchdegree

**FOR MORE
INFORMATION**

Please visit
www.cumbria.ac.uk/graduateschool

Diane Warner

Studying for a PhD

Senior Lecturer at University
of Cumbria – Primary English

Diane has a passion for her subject and chose a research subject that was not only close to her heart, but also relevant to her career.

“As a lecturer it is vital that I am continually studying to progress my thinking and outlook because I am then more able to work effectively with students who are also on a learning journey. PhD level study enables you to dig deep into an issue that really interests you. It is often an area which affects you emotionally as well as professionally, so in that way you are learning at both a cerebral and personal level.”

The area that Diane has chosen to research is the journey of black and ethnic minority student teachers as they progress through their teacher training courses.

Diane says: “This includes understanding their reasons for wanting to become teachers and other motivations and also the difficulties they encounter while at university and on school placement. It very much looks at the stories they tell which builds a picture of the whole person. The research will also add to the



“As a lecturer it is vital that I am continually studying to progress my thinking and outlook”

picture of trainees in England and the often unseen issues they have to deal with.

“I also feel that ethnic minority issues are not high on the education agenda at the moment, so hope my study will be useful.”

GOOD VALUE POSTGRADUATE STUDY

Our postgraduate fees are good value and reflect our wish to make them as affordable as possible for you. Fees for 2014/15 are shown below and are subject to confirmation. Please visit www.cumbria.ac.uk/fee for up-to-date information.

All MA courses (excluding MA Person Centred Counselling and Psychotherapy and MA Social Work)

PG (MA) Awards	Credits	Home/EU/Channel Islands/ Isle of Man course fee
Single module*	20	£500
Postgraduate Certificate	60	£1,500
Postgraduate Diploma	120	£3,000
Masters (MA)	180	£4,500

MA Counselling and Psychotherapy

Award	Credits	Home/EU/Channel Islands/ Isle of Man course fee
Postgraduate Diploma	120	£4,660
Masters	180	£7,000

MSc Standard fees

PG (MSc) Awards	Credits	Home/EU/Channel Islands/ Isle of Man course fee
Single module*	20	£500
Postgraduate Certificate	60	£1,500
Postgraduate Diploma	120	£3,000
Masters	180	£4,500

*For stand-alone modules the fees are payable in full at the start of the course, and are non-refundable.

MBA

PG (MBA) Awards	Credits	Home/EU/Channel Islands/ Isle of Man course fee
Single module*	20	£1,111
Postgraduate Certificate	60	£3,333
Postgraduate Diploma	120	£6,666
Masters	180	£10,000

*For stand-alone modules the fees are payable in full at the start of the course, and are non-refundable.

Research Degrees

Student	Mode of study	Tuition fee	Registration fee	Exam fee
Home/EU	Full-time	£3,920	£180	£180
	Part-time	£1,960	£180	£180
Channel Islands, Isle of Man	Full-time	£4,580	£180	£180
	Part-time	£2,290	£180	£180
International	Full-time	£11,870	£180	£180
	Full-time (Distance Learning)	£5,935	£180	£180
	Part-time	£5,935	£180	£180

Discount

Graduates from the University of Cumbria or any of its legacy institutions may be eligible for a fee discount of 20% on postgraduate taught courses. To be eligible, you must be a UK or EU graduate who studied at the University of Cumbria or a legacy institution for more than six months.

have finance in place to support your fees and living costs either through savings or through sponsorship. Some courses, for example social work and some health professions masters degrees do attract some funding. For more information visit www.cumbria.ac.uk/finance

Funding

The UK government does not usually fund students who are studying at postgraduate level and it is therefore important that you

for other courses, you may be able to obtain a small amount of funding through scholarships or charitable trusts. For more information visit www.cumbria.ac.uk/scholarships

THE SMALL PRINT

The university will endeavour to take all reasonable steps to provide educational services in the manner set out in the postgraduate guide and particularly for those set out in further documents. It does not however guarantee provision of such services.

This edition of the University of Cumbria's Postgraduate Guide describes the facilities and courses which the university intends to offer during the academic year commencing autumn 2014. However the university reserves the right to cancel, suspend or modify in any way necessary the details contained herein, without notice. While every effort has been made to ensure that the information contained in the postgraduate guide is correct, no responsibility can be taken for inaccuracies.

Should industrial action or circumstances beyond the control of the university interfere with its ability to provide educational services, the university undertakes to use all reasonable steps to minimise the resultant disruption to those services.

Should you become a student at the university you will receive further documents describing teaching assessment and other educational services.

Should you become a student at the university, this notice shall constitute a term of any contract between you and the university. Any offer of a place made to you by the university is made on the basis that in accepting such an offer, you signify your consent to the incorporation of this notice as a term of any such contract.

Should you enrol at the university you are personally liable for prompt payment of your tuition and other fees in line with the university payment timetable. If you have outstanding debts, you will not be permitted to re-enrol at the university in future years.

If you are in your final year of study you will not receive your certificate or formal transcript, or be allowed to graduate until your tuition fee debts are settled.

Design

External Relations,
University of Cumbria

Photography

Lee Boswell Photography,
and University of Cumbria

Editor

External Relations,
University of Cumbria

SEE FOR YOURSELF

There is nothing like experiencing what we offer first hand. That includes talking to lecturers, current students and examining our facilities. You can do all of this on one of our postgraduate open evenings.

2013

Wed 6 November	PG routes into teaching	Lancaster
Wed 13 November	PG routes into teaching	Carlisle, Fusehill St
Wed 13 November	UG and PG open evening	London
Tues 26 November	PG virtual open day	Online
Wed 11 December	PG routes into teaching lunchtime drop-in	Ambleside Carlisle, Brampton Rd Carlisle, Fusehill St Lancaster
Wed 13 November	PG routes into teaching	London

2014

Wed 22 January	PG routes into teaching	Carlisle, Fusehill St Lancaster
Wed 19 March	PG routes into teaching	Carlisle, Fusehill St Lancaster
Wed 7 May	PG routes into teaching lunchtime drop-in	Ambleside Carlisle, Brampton Rd Carlisle, Fusehill St Lancaster
Wed 7 May	PG virtual open day	Online
Wed 21 May	PG routes into teaching	Carlisle, Fusehill St Lancaster
Wed 2 July	PG routes into teaching	Carlisle, Fusehill St London
Wed 2 July	UG and PG open evening	London
Wed 9 July	PG routes into teaching	Lancaster

FOR MORE
INFORMATION
VISIT...

www.cumbria.ac.uk/opacity or email
enquirycentre
@cumbria.ac.uk



VIRTUAL OPEN DAYS

Our virtual open days give you a feeling of what it's like to study with us.

Tuesday 26 November 2013
Wednesday 7 May 2014

To book or for more information visit
www.cumbria.ac.uk/opacity

FOR MORE
INFORMATION ON
POSTGRADUATE
COURSES VISIT
[WWW.CUMBRIA.AC.UK
/POSTGRADUATE](http://WWW.CUMBRIA.AC.UK/POSTGRADUATE)

COURSE ENQUIRIES

Call 0845 6061144

Visit www.cumbria.ac.uk/enquiries

Email enquirycentre@cumbria.ac.uk